

# Wool Weekly



Friday, 15 March 2024

## WOOL MARKET MOVEMENTS

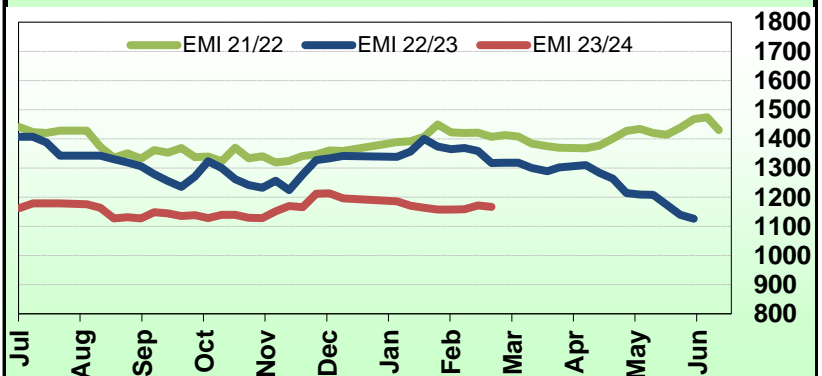
- The EMI slipped 5 cents this week to 1,167 c/kg clean. Demand was strong across most sectors, with currency movements contributing to the lower EMI (in USD terms the market lifted 9 cents). This weeks offering was 40,055 bales (up 2,766 bales) with the national pass in rate lifting 1.6% to 6%. Tuesday and Wednesday sales at all centres next week with 45,877 bales currently rostered for sale.
- Sydney's Merino fleece sector stepped up again on Tuesday. All MPGs, except the 16.5 µm (down 3 cents), ended the day higher, lots with higher strength (>40N/ktex) were keenly sought. While the sector softened on Wednesday, especially the 19-20 µm MPGs, the previous days gains were not completely eroded. Just 3% of fleece lots were passed in on each day. Small price variations in Merino skirtings on Tuesday which increased on Wednesday. Lots carrying colour and cotts continue to be discounted. No change in crossbreds on Tuesday, before finer (<26 µm) lots slipped on Wednesday. Oddments were unchanged. The Northern Regional Indicator rose 1 cent to 1,217 c/kg clean as the Northern Merino Carding Indicator gained 3 cents to 711 c/kg clean. Sydney's pass in rate was 2.1% with 193 bales withdrawn.
- Small price movements in Melbourne's Merino fleece sector on Wednesday with all MPGs represented. The sector eased on Thursday (down 10 to 20 cents). Selected accredited Non Mulesed lots attracted small premiums. Well measured, stylish (MP4) Merino skirtings with low (<2.5%) VM lifted up to 20 cents on Wednesday. Finer (<18 µm) lots slipped lower on Thursday, others were unchanged. Crossbreds softened on Wednesday with clip preparation standards continuing to be the main price driver. Little price changes on Thursday. A limited selection of oddments firmed. The Southern Regional Indicator lost 10 cents to 1,133 c/kg clean as the Southern Merino Carding Indicator lifted 7 cents to 742 c/kg clean. The Melbourne pass in rate was 7.5% with 918 bales withdrawn.
- Fine, stylish Merino fleece lots with higher yields sold well in Fremantle on Tuesday lifting up to up to 15 cents. All the price gains were eroded on Wednesday, leaving all MPGs in negative territory, down 5 to 24 cents. Merino skirtings lifted on Tuesday, particularly broader (>19 µm) lots, but followed the fleece sector down on Wednesday. Oddments lifted on Tuesday on the back of keen competition for locks and stains and was unchanged on Wednesday. The Western Regional Indicator slipped 10 cents to 1,298 c/kg clean as the Western Merino Carding Indicator lifted 8 cents to 742 c/kg clean. The Fremantle pass in rate was 6.5% with 417 bales withdrawn.

## AWEX WEEKLY WOOL PRICES

Regional Indicator	North	Wkly Chg	South	Wkly Chg	West	Wkly Chg
c/kg clean	1217	+1	1133	-10	1298	-10
MICRON PRICE GUIDES						
16.5	1880	-3	1859n	-22	-	-
17	1775	+2	1748n	-29	-	-
17.5	1676	+4	1650	-25	-	-
18	1585	+4	1558	-19	1550	-8
18.5	1509	+13	1478	-22	1497	-6
19	1449	+9	1426	-11	1419	-10
19.5	1399	+10	1391	-9	1388	-5
20	1365	+6	1336	-25	1334	-24
21	-	-	1322	-16	1321	-10
22	-	-	1296n	-6	-	-
23	-	-	-	-	-	-
24	-	-	-	-	-	-
25	-	-	698n	-	-	-
26	-	-	530	+2	-	-
28	365	0	357	-3	-	-
30	0	-	342	-5	-	-
32	-	-	300	0	-	-
MC	711	+3	742n	+7	742	+8

## AWEX EMI 2020/21 & 2021/22 Seasons vs Current

Currently: 1167 c/kg clean



## UPCOMING AUCTION VOLUMES

	20/03/2024	27/03/2024	3/04/2024
Northern	S38	S39	S40
Sydney	12,374	9,863	RECESS
Southern	M38	M39	M40
Melbourne	23,870	19,884	RECESS
Western	F38	F39	F40
Fremantle	9,633	8,910	RECESS
Total	45,877	38,657	RECESS

## THIS WEEK'S SALES STATISTICS

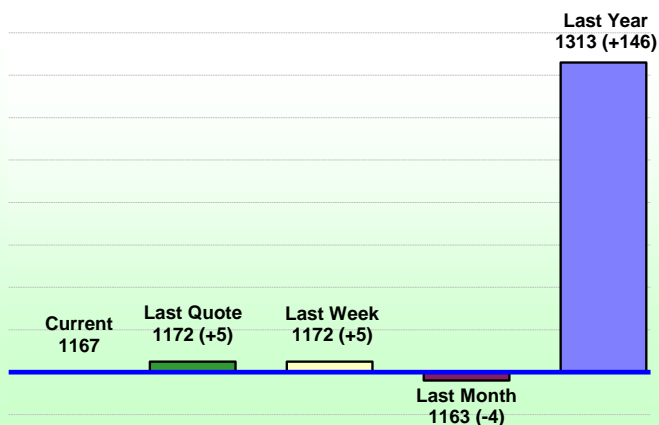
Centre	Bales Originally	Bales Offered	Bales Sold	Pass in Rate
Northern	10,360	9,386	9,192	2.1%
Southern	19,952	20,543	18,993	7.5%
Western	8,570	10,126	9,463	6.5%
TOTAL	38,882	40,055	37,648	6.0%

15 Mar 2024

## Nutrien Wool Report

EMI 1167 NMI 1217 SMI 1133 WMI 1298

Average Nth-Sth MPG's as reported on 14 Mar 2024

Nutrien  
WoolAWEX Weekly Eastern Market Indicator  
Quote Comparisons

## AUD vs USD from 06-Jul-04 to 14-Mar-24



Micron	EMI	16.5	17	17.5	18	18.5	19	19.5	20	21	22	23	25	28	AUD
Current MPG's	1167	1859	1748	1650	1558	1478	1426	1391	1336	1281	1258	-	698	357	0.662
10 year Average	1337	2015	1920	1837	1745	1659	1581	1521	1469	1429	1400	1370	1221	1046	0.775
This time last year	1317	2403	2290	2111	1955	1799	1651	1554	1479	1411	1376	-	-	349	0.664
10 year High	2116	3187	3007	2831	2683	2569	2462	2414	2391	2371	2350	2308	2153	1828	1.058
10 year Low	858	1267	1216	1177	1140	1060	997	947	905	884	863	953	941	684	0.557
% Reported above current	67%	55%	56%	56%	58%	61%	60%	60%	61%	51%	51%	0%	0%	98%	91%
Diff b/w High & Current	949	1328	1259	1181	1125	1091	1036	1023	1055	1090	1092	-	1455	1471	0.396
Diff b/w Ave & Current	-170	-156	-172	-187	-187	-181	-155	-130	-133	-148	-142	-	-523	-689	-0.113

## Percentiles

95%	1934	2962	2743	2526	2400	2328	2277	2258	2234	2214	2203	2166	1830	1503	1.050
90%	1766	2788	2607	2437	2298	2168	2070	2009	1952	1874	1851	1799	1383	1260	1.030
80%	1500	2551	2421	2271	2120	1928	1785	1697	1604	1517	1458	1428	1245	1174	0.975
75%	1420	2474	2351	2216	2066	1880	1729	1613	1526	1457	1408	1364	1162	1123	0.932
60%	1315	2166	2079	1981	1850	1735	1611	1494	1405	1355	1320	1296	1154	1009	0.779
50%	1271	1953	1811	1722	1621	1544	1500	1447	1370	1319	1283	1232	1123	941	0.761
40%	1212	1806	1667	1592	1537	1477	1424	1379	1335	1291	1248	1187	1092	911	0.739
25%	1117	1532	1460	1424	1383	1342	1302	1274	1235	1213	1175	1126	1049	883	0.711
10%	1023	1393	1318	1275	1245	1213	1180	1148	1130	1120	1088	1046	976	760	0.671

## Indicative Basis Contract Prices

Date	MPG				
	EMI	18	19	21	28
Apr-2024	1175	1525	1450	1335	355
May-2024	1175	1525	1450	1335	355
Jun-2024	1175	1530	1450	1335	355
Jul-2024	1185	1530	1460	1340	355
Aug-2024	1185	1550	1460	1340	355
Sep-2024	1200	1550	1460	1350	355
Oct-2024	1200	1560	1460	1350	355

Please use above figures as a guide to submit  
your GTC or Target orders.

Unshaded cells are actual trades

Call 0417 564 899

Basis Contract prices are published purely as a guide.

## Mulesing Status P/D's

Micron	Non Mulsed	Pain Relief
18	+15	+2
19	+8	+5
20	+8	+3
21	na	na
23	na	na
25	+7	na

Mulesing P/D's quoted by AWEX.

All prices on this sheet are listed in c/kg clean. MPG's are average North/South AWEX quoted figures.