

GUILFORD

POLL HEREFORDS



50th

ANNUAL SALE

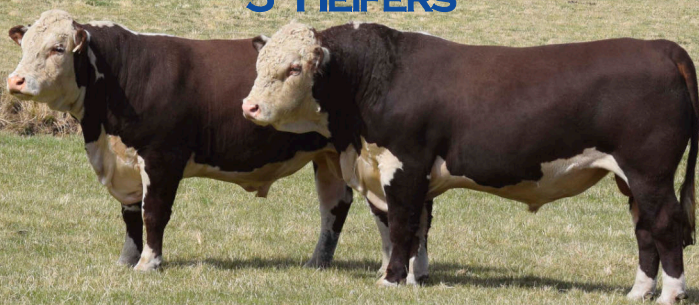
FRIDAY 5TH APRIL 2024

1.30 PM

“GUILFORD” OUSE TASMANIA

45 BULLS

5 HEIFERS



GUILFORD POLL HEREFORDS

**50TH ANNUAL SALE
AT "GUILFORD" 1114 TOR HILL RD
HOUSE TASMANIA**

**FRIDAY 5TH APRIL 2024
COMMENCING 1.30 PM**

**OFFERING
45 REGISTERED BULLS
RISING 2YR OLD.**

**5 REGISTERED HEIFERS
10-11 MONTHS OLD.**

**USING THE HELMSMAN SALE SYSTEM
INTERFACED ON AUCTIONSPLUS.**

ACCOUNT: J.P. DAVIE & CO

**PHILIP PH: 0427 871444
EMAIL: philip@guilford.com.au**

BERT PH: 0429 871318 (03) 62871318

BRETT PH: 0428 871317

www.guilford.com.au



Guilford Poll Herefords



Instagram [guilford_pollherefords](https://www.instagram.com/guilford_pollherefords)



AuctionsPlus™

J-BAS 8

SELLING AGENT

**Nutrien
Livestock™**

Nutrien Livestock (03) 63916545

Email: livestocktas@nutrien.com.au

Mr Jock Gibson Mobile 0418 133 595

Mr Cooper Lamprey Mobile 0429 304 110

Mr Rodney Batchelor. Mobile 0419 892 582

Or your local Nutrien Livestock agent.

5% rebate to outside agents (Conditions apply see page 2)

GUILFORD

POLL HEREFORDS

Welcome to Guilford and our 50th annual sale which will be held on Friday 5th of April at 1.30pm, offering 45 bulls and 5 specially selected registered U heifers.

A commercial herd of Poll Herefords has been bred on Guilford and properties run in conjunction, by the Davie family since 1948, after the purchase of Hereford females at the "Lawrenny" dispersal sale. Bulls for private sale were originally bred from this herd. Private sales started in 1970. This led to the formation of our first on property sale in 1975. A stud herd was founded in 1976 based on cows from the dispersal sales of CFB, Evercreech and Kildrummie Poll Hereford studs.

With the average lifespan of a cattle stud at around ten years, to be holding our 50th sale is an achievement that we are proud of. From those carefully selected foundation cows, this time has enabled us to breed a very good cow herd which could be described as "good as any, and better than most" across Australia. This cow herd is the strength of our stud, and is evidenced by the performance and evenness of our sale bulls for many number of years now. Our region with an often unforgiving climate puts a selection pressure on our cow herd that is hard to replicate on better rainfall country or access to irrigation, particularly in terms of doing ability and fertility during tough times. Combined with our focus on growth, thickness, muscle and optimal milk, our cattle are very easy-doing and will put weight on quickly when feed is available. This is an advantage to our bull buying clients and can help to lift the profitability of your beef operation. A client who had good knowledge of our area, once said "if your cattle survive and do well in your country, they will thrive in mine". For buyers not able to physically make it to the sale to inspect the cattle we will have photos and videos of all lots available on the website and through AuctionsPlus. We will endeavour to have as much information as possible on our supplementary sheet which should be available on our website no later than 2/4/2024. Agents and ourselves are also happy to give detailed descriptions of any bulls via phone and answer any questions you may have. Anyone buying bulls sight unseen can rest assured that their purchases are fully backed up by us, and we will do as much as possible to make sure that they are satisfied with their purchases.

The bulls have all been run as one group from weaning until November 24th, and then split into two groups (Lots 1-23, and lots 24-45) with identical feed conditions.

If you are looking for easy care cattle with proven commercial performance, then we look forward to assisting you on the 5th of April or pre sale inspection by appointment is welcome any time before. If we can be of any assistance before or on sale day please do not hesitate to ask.

The Davie Family.

Sale Information

Guilford is located on Tor Hill Road approximately 13kms from Ouse and 23kms from Bothwell.

Pre-sale inspection of cattle is always welcome and can be arranged by appointment with the vendors.

Sale Day inspection from 10:30am. Helmsman sale starts at 1.30pm.

Bull weight sheet available on sale day. Or available on our website by 2/4/2024

Free delivery to Melbourne, King Island, and Flinders Island on bulls sold at auction for \$5000 & over.

Bulls will be delivered free locally and to major connection points. Eg. Powranna.

Vendor terms for 1st September payment are available to buyers approved by the agents.

Insurance is highly recommended and can be arranged for transit and/or periods up to 12 months cover. Ownership transfers at the completion of the sale. While every care will be taken, no responsibility can be accepted whilst awaiting delivery.

A rebate of 5% commission will be available to all outside agents who attend the sale with or on behalf of their client, and introduce clients in writing at least 12 hours prior to the commencement of the sale.

A rebate of 1% commission will be available to all outside agents not in attendance but introducing clients in writing at least 12 hours prior to the commencement of the sale.



The sale will also be interfaced with AuctionsPlus, to bid you must be a registered AuctionsPlus user and must register preferably 24 hours prior to the sale.

Sale venue has Telstra coverage and phone bidding can also be organised by contacting the selling agents.

Transport and accommodation available through the agents.

Lunch and refreshments available at sale.

Health.

All bulls offered have been inspected, and semen & morphology tested, by Mr Damon Englund, Deep Creek Cattle Services.

All bulls have been tested PI negative for Pestivirus (BVDV).

The bulls have also been vaccinated with 5 in 1 vaccine and annual boosters are recommended. Last done 24/11/2023

Property has transitioned to a Johnne's Beef Assurance Score (J-BAS) of 8, had been in the BJD MAP since 2000.

Property is EU accredited.

Sale Information

Guarantee.

All bulls sold are guaranteed fertile. This condition is valid for a period of 12 months after date of sale and if the vendor receives notification of infertility, not caused by injury or illness, together with a certificate from a registered veterinarian on or before that date. In the event of an animal failing to breed, a credit equal to the full purchase price minus salvage value will be given at the following sale or by negotiation with the vendors. Any bulls for which claims are made must be delivered free of charge by the purchaser to any place mutually agreed upon.

Genetic Testing

All sale bulls have had a Genomic test completed. The Genomic information from this test is used to enhance EBV data and accuracy, verify the sire of all bulls, test for any genetic conditions, and also identify bulls that are homozygous poll. Homozygous poll animals are identified with (PP) after their name. (P) indicates a poll animal that carries a recessive horn gene. (S) indicates an animal has scurs.

If mated to horned cows, these bulls that carry two copies of the poll gene (PP) could genetically dehorn up to 100% of their progeny. These bulls would be of assistance to breeders with horned females that wish to accelerate genetic dehorning in their herds. Generally, strong poll herds do not need to focus on the gene due to the dominance of the poll gene (P) to the horn gene (h).

Handling your new bull.

Most of our stock work is done using horses and dogs. The cattle are also familiar with quad bikes and vehicles. In the yards the cattle are handled quietly and confidently. All sale bulls have been evaluated for temperament and are quiet and easy to handle under these conditions. However we recommend that when your new bull arrives home, have some steers or cows in the yards when you unload him to help him adjust to his new environment, especially if a solo purchase.

Liability.

Although accidents at sales are rare, people attending do so entirely at their own risk.

Whilst all due care and attention has been paid to accuracy in the compilation of this catalogue, neither the vendors nor the selling agents assume any responsibility whatsoever for the correctness, use or interpretation of the information on animals included in this sale catalogue.

Online catalogue with photographs & video of all sale bulls and some sires available at **www.guilford.com.au** and **AuctionsPlus.**

Please bring this catalogue to the Sale.

BREEDPLAN EXPLANATION

Breedplan is a performance evaluation programme that describes the genetic profile of bulls for a number of commercially important traits. This profile is given as an Estimated Breeding Value (EBV), expressed as a figure (+/-) relative to the breed benchmark of zero (0) for each trait. The EBVs in this catalogue are Hereford Group Breedplan EBVs and can be directly compared with Hereford Group Breedplan from other herds.

AVERAGE 2024 GROUP BREEDPLAN EBVs FOR 2022 DROP CALVES.										
Bwt	Milk	200	400 wt	600 wt	CWT	EMA	Rump	RBV%	IMF%	SS
+4.5	+17	+36	+59	+83	+55	+4.5	+0.9	+1.0	+0.8	+2.3

GL - Gestation Length EBV (days) is based on AI records. Lower (negative) GL EBVs indicate easier calving & increased growth after birth.

BWT - Birth Weight EBV (kg). The lower the birth weight EBV, the lighter is the birth weight potential of the progeny.

Milk - Genetic milk EBV (kg) reflects extra calf weight at weaning due to the genetic influence a sire has on his daughters milking and mothering ability.

200 WT - 200 Day Weight EBV (kg) indicates the relative weight advantage of a sire at 8-10 months of age.

400 WT - 400 Day Weight EBV (kg) indicates the relative weight advantage of a sire at yearling age.

600 WT - 600 Day Weight EBV (kg) indicates the relative weight advantage of a sire beyond yearling age.

CWT - Carcase Weight EBV (kg) estimates the genetic difference in carcase weight at a standard age of 650 days.

EMA - Eye Muscle Area EBV (sq.cm) estimates genetic differences in eye muscle area at the 12/13th rib site of a 300kg dressed carcase. Bulls with positive (+) EBVs for this trait are expected to produce more muscular progeny than bulls with negative EBVs.

Rump - More positive EBVs indicate more subcutaneous fat and earlier maturity. Bulls with negative EBVs for this trait are expected to produce relatively leaner progeny than bulls with positive EBVs

RBV% - Retail Beef Yield Percentage EBV (%) represents total (boned out) meat yield as a percentage of a 300kg dressed carcase. A more positive EBV indicates higher percentage yield.

IMF% - Intra-muscular Fat Percent EBV (%) is an estimate of the genetic difference in the percentage of intra-muscular fat at the 12/13th rib site in a 300kg carcase. Depending on target markets, positive values are generally more favourable.

SS - Scrotal Size EBV (cm) is an indicator of male fertility in regards to semen quality & quantity. Positive EBVs indicate higher fertility. SS is also positively associated with female fertility.

Accuracies - The accuracy provides a measure of the reliability of the EBV. The higher the value, the less likelihood of the EBV changing with the addition of more performance information on the animal or its relatives. Accuracy of less than 75% should be considered low.

REFERENCE SIREs

GUILFORD NUCLEAR N19 (P)

REG: AJDN019

BORN: 13/5/2017

TH 71U 719T MR Hereford 11X (IMP USA)(P)
 TH 70U 11X MR Hereford 34Z (IMP USA)(P)
 TH 172J 57G Queen Maker 70R (P)

SIRE: DAYS FAHRENHEIT K103 (AI)(PP)
 Allendale Waterhouse D1 (PP)
 Days Marshall Lass H133 (PP)
 Allendale Marshall Lass C55 (AI)(P)

Studbrook D'Artagnion V086(AI)(ET(S))
 Otapawa Spark 3060 (IMP NZL)(P)
 Otapawa Spot P30 (P)

DAM: GUILFORD ELEANOR G19 (AI)(P)
 Debarry Eden (PP)
 Guilford Eleanor D91 (P)
 Guilford Eleanor Z5 (AI)(P)

2024 FEBRUARY HEREFORD GROUP BREEDPLAN EBVs											
GL	Bwt	Milk	200wt	400wt	600wt	CWT	EMA	Rump	RBY%	IMF%	SS
-1.6	+2.8	+23	+38	+66	+100	+69	+3.4	+1.8	+0.4	+0.1	0.0
68%	93%	65%	89%	86%	89%	76%	66%	75%	66%	72%	89%

Nuclear is a long bodied son of Days Fahrenheit K103 who we purchased at Dubbo in 2016 for \$43,000. Low Birth weight sire with excellent growth EBV's, high milk, EMA & rump fat. Sire of Lots: 17, 20, 31, 40 & 48.

GUILFORD PETROLEUM P24 (AI) (PP)

REG: AJDP024

BORN: 26/4/2018

Allendale Punter 3 (AI)(P)
 Allendale Yacka (AI)(P)
 Allendale Florrie Z33 (AI)(P)

SIRE: ALLENDALE ANZAC E114 (PP)
 Allendale National W168 (PP)
 Allendale Dawn B22 (AI)(ET)(P)
 Allendale Dawn T60 (AI)(P)

Debarry Eden (PP)
 Guilford Graduate G23 (AI)(P)
 Guilford Cindy D100 (P)

DAM: GUILFORD PAULINA L29 (P)
 Allendale Washington C77 (AI)(PP)
 Guilford Paulina F115 (P)
 Guilford Paulina B74 (P)

2024 FEBRUARY HEREFORD GROUP BREEDPLAN EBVs											
GL	Bwt	Milk	200wt	400wt	600wt	CWT	EMA	Rump	RBY%	IMF%	SS
-1.6	+5.6	+19	+44	+74	+106	+66	+3.2	+4.3	-1.5	+1.6	+5.5
69%	91%	67%	86%	84%	87%	75%	65%	73%	67%	71%	86%

Long thick easy doing bull who is breeding exceptionally well. His progeny have excellent growth, milk, good EMA and highly positive rump and IMF% EBV's. Sire of Lot: 2, 3, 5, 8, 13, 16, 28, 32, & 45.

REFERENCE SIREs

MAWARRA STAR ATTRACTION P033 (AI)(PP)

REG: HRPP033

BORN: 11/2/2018

Koanui Unanimous 7174 (P)
 Koanui Unanimous 0408 (P)
 Koanui Girlie 3048 (P)

SIRE: KOANUI TECHNO 3062 (IMP NZL)(PP)
 Leelands X-tension 293 (P)
 Koanui Blush 6455 (P)
 Koanui Blush 3304 (P)

Karina Cherry Z8 (PP)
 Tycolah Jovial F77 (PP)
 Tycolah Countess W48 (P)

DAM: MAWARRA TABITHA 021 (AI)(P)
 Mccoy 25 Renaissance 53W(IMP CAN)(PP)
 Mawarra Tabitha 007 (P)(AI)(P)
 Mawarra Tabitha 002 (AI)(ET)(P)

2024 FEBRUARY HEREFORD GROUP BREEDPLAN EBVs											
GL	Bwt	Milk	200wt	400wt	600wt	CWT	EMA	Rump	RBY%	IMF%	SS
+3.7	+8.5	+29	+45	+85	+126	+75	+4.2	-0.3	+0.9	+1.8	+4.4
91%	94%	65%	90%	87%	88%	76%	68%	75%	68%	73%	89%

Star Attraction was purchased at the Wodonga Hereford show and sale in 2020. He is a powerful, thick, deep bodied bull. Has excellent EBV's for growth, milk, & IMF. Sire of Lots: 7, 15, 23, 27, 29, 39, 42 & 46.

GUILFORD PATRIOT P23 (PP)

REG: AJDP023

BORN: 25/4/2018

Wirunna Explorer E188 (AI)(ET)(P)
 Wirunna Hartwig H297 (P)
 Wirunna Midge A51 (AI)(P)

SIRE: WIRUNNA KALIMNA K326 (PP)
 Ardo Hustler 4110 (IMP NZL)(P)
 Wirunna Cora H303 (AI)(ET)(P)
 Wirunna Cora D9 (AI)(P)

Allendale Yacka (AI)(P)
 Allendale Anzac E114 (PP)
 Allendale Dawn B22(AI)(ET)(P)

DAM: GUILFORD QUEENIE M9 (AI)(P)
 Guilford Future F81 (P)
 Guilford Queenie J58 (P)
 Guilford Queenie E91 (P)

2024 FEBRUARY HEREFORD GROUP BREEDPLAN EBVs											
GL	Bwt	Milk	200wt	400wt	600wt	CWT	EMA	Rump	RBY%	IMF%	SS
-1.3	+4.9	+30	+46	+73	+97	+64	+4.1	+1.3	+0.8	+1.1	+2.6
70%	88%	68%	86%	84%	86%	75%	66%	73%	66%	72%	85%

Long bodied bull with an excellent set of EBV's. Represented by 6 very good bulls in this sale. Sire of Lot: 21, 22, 33, 37, 38 & 41.

REFERENCE SIRES

BOWEN QWADE Q064 (AI) (PP)

REG: BWNQ064

BORN: 24/6/2019

SIRE: Koanui Rocket 0219 (IMP NZL)(P)
Pine Hill Crossfire C558 (AI)(P)
Pine Hill Ghost Maple W16 (AI)(P)
YAVENVALE JET FIRE J032 (PP)
Kurrajong Park B144 (P)
Yavenvale Empress G320 (P)
Yavenvale Empress C340 (H#)
Allendale Waterhouse D1 (PP)
Days Calibre G74 (PP)
Allendale Dawn C62 (AI)(P)

DAM: BOWEN FANCY M180 (P)
Tycolah Zorro (P)
Bowen Fancy E205 (AI)(P)
Bowen Fancy A381 (AI)(P)

2024 FEBRUARY HEREFORD GROUP BREEDPLAN EBVs											
GL	Bwt	Milk	200wt	400wt	600wt	CWT	EMA	Rump	RBY%	IMF%	SS
+2.0	+3.5	+15	+36	+61	+85	+61	+5.0	+1.5	+0.1	+1.6	+1.9
72%	88%	62%	85%	82%	83%	71%	59%	69%	62%	67%	81%

Qwade is deep bodied easy doing bull with good length and thickness.
Siring attractive easy doing cattle. Sire of Lots: 11, 25, 30, 34, 43, 44 & 46.

GUILFORD JOCULAR J139 (PP)

REG: AJDJ139

BORN: 03/7/2013

SIRE: EBBX Calgary (AI)(ET)(P)
Debarry Calgary C58 (P)
Debarry Dallas X75 (AI)(P)
ALLENDALE BUSHMAN F119 (P)
Okawa Commodore 020076(NZL)(P)
Allendale Daisy C26 (AI)(P)
Allendale Daisy Z210 (P)
Bowen Vincent V1 (S)
Debarry Eden (PP)
Debarry Purity V50 (AI)(ET)(P)

DAM: GUILFORD ELEANOR D46 (P)
4K Survivor (IMP USA)(S)
Guilford Eleanor X1 (AI)(P)
Guilford Eleanor T58 (P)

2023 FEBRUARY HEREFORD GROUP BREEDPLAN EBVs											
GL	Bwt	Milk	200wt	400wt	600wt	CWT	EMA	Rump	RBY%	IMF%	SS
-1.3	+4.1	+18	+28	+46	+66	+39	+2.6	+4.2	-0.9	+0.7	+4.2
69%	93%	81%	90%	89%	91%	79%	69%	77%	70%	75%	91%

Attractive long thick easy doing son of Bushman who is passing these traits onto his progeny. In the top 1% for rump fat.
Sire of Lots: 9, 18, 24, 26, & 35.

REFERENCE SIREs

GUILFORD LANDSCAPE L138 (PP)

REG: AJDL138

BORN: 04/6/2015

Studbrook D'artignion V086 (AI)(ET)(S)
 Otapawa Spark 3060 (IMP NZL)(AI)(ET)(P)
 Otapawa Spot P30 (P)

SIRE: GUILFORD GOVERNOR G38 (AI)(P)
 Debarry Eden (PP)
 Guilford Satin D49 (P)
 Guilford Satin Z24 (AI)(P)

Bowen Vincent V1 (S)
 Debarry Eden (PP)
 Debarry Purity V50 (AI)(ET)(P)

DAM: GUILFORD LADY JESSIE G9 (AI)(P)
 Guilford Zeus Z1 (AI)(S)
 Guilford Lady Jessie D59 (P)
 Guilford Lady Jessie X86 (P)

2024 FEBRUARY HEREFORD GROUP BREEDPLAN EBVs											
GL	Bwt	Milk	200wt	400wt	600wt	CWT	EMA	Rump	RBY%	IMF%	SS
-2.1	+5.9	+20	+50	+76	+111	+84	+7.4	+2.1	+1.5	+1.6	+1.2
67%	92%	76%	89%	87%	89%	77%	66%	75%	68%	73%	89%

Landscape is a dark coated, long thick Governor son, siring calves with good growth and thickness. Excellent growth and carcass EBVs.
 Sire of Lots: 4, 10, 14, 19, & 36.

CHURCHILL BROADWAY 858F (IMP USA)(PP)

REG: OSA43919937AHR

BORN: 29/1/2018

MSU WNH Felton 5F (P)
 MSU MF Hudson 19H (P)
 MSU Victoria 9F (P)

SIRE: SHF YORK 19H Y02 (P)
 SHF Progress P20 (IMP USA)(P)
 Loewen Miss P20 10W (P)
 Loewen M326 Miss 39T (P)

Schu-lar on Target 22S (IMP USA)(ET)(P)
 KC Bennett Encore Z311 (ET)(PP)
 KCF Miss Revolution X338 (ET)(P)

DAM: CHURCHILL LADY 640D (P)
 Churchill Red Bull 200Z (P)
 Churchill Lady 416B (H#)
 Churchill Lady 649S (H#)

2024 FEBRUARY HEREFORD GROUP BREEDPLAN EBVs											
GL	Bwt	Milk	200wt	400wt	600wt	CWT	EMA	Rump	RBY%	IMF%	SS
-3.9	+2.1	+20	+44	+77	+95	+73	+5.5	+1.1	-0.1	+1.6	+3.9
97%	97%	75%	94%	94%	93%	83%	76%	77%	66%	81%	92%

New genetics from the US. Broadway calves are small born with very good growth and thickness. We have retained a son whom we used last year as a yearling, backing up AI heifers. Sire of Lots: 1 & 12.

LOT 1 GUILFORD TESTIMONY T005 (AI)(PP)

Born: 25/4/2022

Eye Pigment: 100/100

Reg: AJDT005

Scrotal Circum: 40 cm

SIRE: CHURCHILL BROADWAY 858F (PP)

Tobruk Jedi (ET)(PP)

Wirruna Legs L108 (AI)(PP)

Wirruna Golden Vanity D88 (AI)(P)

DAM: GUILFORD LAST DAY Q009 (P)

Allendale Bushman F119 (P)

Guilford Last Day N49 (P)

Guilford Last Day G81 (P)

2024 FEBRUARY HEREFORD GROUP BREEDPLAN EBVs											
GL	Bwt	Milk	200wt	400wt	600wt	CWT	EMA	Rump	RBY%	IMF%	SS
-3.3	+5.2	+15	+45	+83	+111	+76	+5.2	+0.9	+0.5	+1.3	+3.8
71%	73%	54%	69%	69%	72%	59%	52%	58%	50%	56%	77%

Long thick bodied bull by Broadway with an excellent set of EBV's in the top 1% for 400 Day wt, top 5% for 200 & 600 Day wt, Scrotal size & CWT. Top 10% for Gestation length, top 15% for IMF% and top 25% for EMA. Stud sire prospect. IEF DLF HYF MSUDF

Purchaser.....\$.....

LOT 2 GUILFORD TESSELLATION T020 (PP)

Born: 05/5/2022

Eye Pigment: 100/100

Reg: AJDT020

Scrotal Circum: 39.5 cm

SIRE: GUILFORD PETROLEUM P24 (AI)(PP)

Debarry Petri (P)

Morganvale Detonator (P)

Heatherdale Amethyst A60 (AI)(P)

DAM: GUILFORD DELYSIA L153 (P)

Mt. Raven Hijacker (AI)(P)

Guilford Delysia Z38 (P)

Guilford Delysia V34 (AI)(P)

2024 FEBRUARY HEREFORD GROUP BREEDPLAN EBVs											
GL	Bwt	Milk	200wt	400wt	600wt	CWT	EMA	Rump	RBY%	IMF%	SS
-2.8	+4.6	+18	+38	+62	+91	+59	+2.8	+1.8	-0.1	+0.3	+3.2
57%	73%	55%	67%	67%	70%	57%	48%	55%	49%	53%	75%

An attractive long thick deep bodied, high growth bull with a good spread of figures to match. In the top 10% for scrotal size, top 20% for rump fat, top 25% for Gestation length and top 30% for 600 Day wt. Stud sire prospect. Photo on back cover. IEF DLF HYF MSUDF

Purchaser.....\$.....

LOT 3 GUILFORD TASKMASTER T031 (PP)

Born: 08/5/2022

Eye Pigment: 100/100

Reg: AJDT031

Scrotal Circum: 41 cm

SIRE: GUILFORD PETROLEUM P24 (AI)(PP)

Debarry Calgary C58 (P)

Allendale Bushman F119 (P)

Allendale Daisy C26 (AI)(P)

DAM: GUILFORD ZINNIA M40 (P)

Guilford Zeus Z1 (AI)(S)

Guilford Zinnia C59 (P)

Guilford Zinnia X46 (P)

2024 FEBRUARY HEREFORD GROUP BREEDPLAN EBVs											
GL	Bwt	Milk	200wt	400wt	600wt	CWT	EMA	Rump	RBY%	IMF%	SS
-2.7	+6.8	+13	+43	+74	+101	+61	+2.6	+2.4	-0.8	+1.0	+4.2
58%	73%	55%	68%	68%	71%	58%	49%	57%	51%	53%	76%

Attractive long thick deep bodied, high growth bull with EBV's in the top 5% for scrotal, top 10% for 400 Day wt. Top 15% for 400 & 600 Day wt, rump fat and Gestation length. Stud sire prospect. IEF DLF HYF MSUDF

Purchaser.....\$.....

LOT 4 GUILFORD TORCHLIGHT T045 (PP)

Born: 14/5/2022

Eye Pigment: 100/100

Reg: AJDT045

Scrotal Circum: 38 cm

SIRE: GUILFORD LANDSCAPE L138 (PP)

Guilford Emperor E10 (AI)(P)

Guilford Hedonist H27 (PP)

Guilford Satin C136 (P)

DAM: GUILFORD PAULINA L30 (P)

Mt. Raven Hijacker (AI)(P)

Guilford Paulina E49 (P)

Guilford Paulina B74 (P)

2024 FEBRUARY HEREFORD GROUP BREEDPLAN EBVs											
GL	Bwt	Milk	200wt	400wt	600wt	CWT	EMA	Rump	RBY%	IMF%	SS
-3.6	+4.7	+13	+41	+66	+88	+68	+5.7	+0.6	+1.9	+0.3	+0.8
55%	74%	57%	68%	68%	71%	58%	49%	58%	51%	53%	76%

Long thick deep bodied bull by Guilford Landscape L138 with excellent growth and weight for age. Top 10% for Gestation length, top 20% for 200 Day wt, EMA and Carcase wt. IEF DLF HYF MSUDF

Purchaser.....\$.....



LOT 5 GUILFORD THESIS T063 (PP)

Born: 019/5/22 Eye Pigment: 100/100
Reg: AJDT063 Scrotal Circum: 43 cm

SIRE: GUILFORD PETROLEUM P24 (AI)(PP)

Otapawa Spark 3060(IMP NZL)(AI)(ET)(P)
Guilford Governor G38 (AI)(P)
Guilford Satin D49 (P)
DAM: GUILFORD CORA N26 (P)
Guilford Future F81 (P)
Guilford Cora J36 (P)
Guilford Cora E38 (P)

2024 FEBRUARY HEREFORD GROUP BREEDPLAN EBVs											
GL	Bwt	Milk	200wt	400wt	600wt	CWT	EMA	Rump	RBY%	IMF%	SS
-0.4	+6.7	+24	+50	+82	+122	+79	+3.7	+3.2	-1.3	+1.9	+5.1
57%	73%	55%	68%	68%	71%	58%	49%	57%	51%	54%	76%

Attractive dark coated Petroleum son with length and extra growth, EBV's in the top 1% for 200 & 600 Day wt and scrotal size. Top 5% for rump fat, IMF% & Carcase wt. Top 10% for milk. Stud sire prospect. IEF DLF HYF MSUDF.

Purchaser.....\$.....

LOT 6 GUILFORD TECHNICIAN T002 (AI)(PP)

Born: 18/4/2022 Eye Pigment: 100/100
Reg: AJDT002 Scrotal Circum: 41 cm

Mount Difficult Cadbury (AI)(P)
Tobruk Maverick (AI)(PP)
Tobruk Daisy (AI)(P)
SIRE: YAVENVALE POWERHOUSE P499 (PP)
Koanui Techno 3062(IMP NZL)(PP)
Yavenvale Lochiel Lady M385 (AI)(S)
Yavenvale Lochiel Lady J411 (H#)
Allendale Anzac E114 (PP)
Guilford Anzac M16 (AI)(P)
Guilford Queenie J150 (P)
DAM: GUILFORD CORA Q33 (P)
Guilford Hedonist H27 (P)
Guilford Cora L19 (P)
Guilford Cora H86 (P)

2024 FEBRUARY HEREFORD GROUP BREEDPLAN EBVs											
GL	Bwt	Milk	200wt	400wt	600wt	CWT	EMA	Rump	RBY%	IMF%	SS
-3.0	+3.4	+22	+41	+69	+95	+74	+4.3	-1.4	+2.3	-0.6	+2.7
71%	72%	51%	68%	68%	71%	57%	49%	56%	50%	54%	76%

Thick Powerhouse bull with a good set of balanced EBVs. Top 20% for 200,400 & 600 Day wt. Top 15% for milk and Gestation length. IEF DLF HYF MSUDF

Purchaser.....\$.....

LOT 7 GUILFORD TAPESTRY T019 (PP)

Born: 04/5/2022 Eye Pigment: 100/100
Reg: AJDT019 Scrotal Circum: 40.5 cm

SIRE: MAWARRA STAR ATTRACTION P033 (AI)(PP)

Kidman Legacy D155 (S)
Kidman Biography H008 (S)
Kidman Shamrock E254(AI)(ET)(PP)

DAM: GUILFORD CORA L57 (TW)(P)
Mt. Raven Hijacker (AI)(P)
Guilford Cora B53 (P)
Guilford Cora Y15(AI)(TW)(P)

2024 FEBRUARY HEREFORD GROUP BREEDPLAN EBVs											
GL	Bwt	Milk	200wt	400wt	600wt	CWT	EMA	Rump	RBY%	IMF%	SS
+1.4	+2.9	+23	+29	+59	+87	+57	+3.4	+1.1	-0.1	+1.6	+3.7
63%	72%	52%	67%	66%	67%	55%	48%	55%	46%	53%	67%

Thick deep bodied, easy doing Star Attraction son. Lower birthweight and in the top 10% for Milk & IMF%. IEF DLF HYF MSUDF

Purchaser.....\$.....

LOT 8 GUILFORD TIDAL T032 (PP)

Born: 06/5/2022 Eye Pigment: 100/100
Reg: AJDT032 Scrotal Circum: 40 cm

SIRE: GUILFORD PETROLEUM P24 (AI)(PP)

Debarry Calgary C58 (P)
Allendale Bushman F119 (P)
Allendale Daisy C26 (AI)(P)

DAM: GUILFORD QUEENIE K34 (P)
Mt. Raven Hijacker (AI)(P)
Guilford Queenie E41 (P)
Guilford Queenie B38 (P)

2024 FEBRUARY HEREFORD GROUP BREEDPLAN EBVs											
GL	Bwt	Milk	200wt	400wt	600wt	CWT	EMA	Rump	RBY%	IMF%	SS
-1.8	+5.0	+19	+39	+63	+87	+58	+4.4	+3.2	+0.3	+0.6	+3.1
58%	73%	56%	68%	68%	71%	58%	49%	58%	51%	54%	77%

Long thick easy doing bull with EBV's in the top 5% for rump fat and top 30% for 200 & 400 Day wt. Stud sire prospect. IEF DLF HYF MSUDF

Purchaser.....\$.....



Lot 5



Lot 6



Lot 7

LOT 9 GUILFORD TRUSTWORTHY T041 (P)

Born: 10/5/2022

Eye Pigment: 100/100

Reg: AJDT041

Scrotal Circum: 38 cm

SIRE: GUILFORD JOCULAR J139 (PP)

Kidman Biography H008 (S)
Guilford Liberty L76 (PP)
Guilford Delysia F5 (AI)(P)
Guilford Zeus Z1 (AI)(S)
Guilford Cora G111 (P)
Guilford Cora B53 (P)

DAM: GUILFORD CORA Q24 (P)

2023 FEBRUARY HEREFORD GROUP BREEDPLAN EBVs											
GL	Bwt	Milk	200wt	400wt	600wt	CWT	EMA	Rump	RBY%	IMF%	SS
-1.1	+8.4	+16	+46	+70	+108	+60	+1.9	+0.3	+0.7	0.0	+2.7
56%	73%	56%	68%	68%	71%	58%	49%	58%	51%	53%	77%

Long soft easy doing bull with thickness and a slick soft skin. EBV's in the top 5% for 200 & 600 Day wt. Stud Sire potential. IEF DLF HYF MSUDF

Purchaser.....\$.....

LOT 10 GUILFORD TRICKSTER T050 (PP)

Born: 14/5/2022

Eye Pigment: 100/100

Reg: AJDT050

Scrotal Circum: 38 cm

SIRE: GUILFORD LANDSCAPE L138 (PP)

Debarry Calgary C58 (P)
Allendale Bushman F119 (P)
Allendale Daisy C26 (AI)(P)
Guilford Atomic A3 (AI)(ET)(P)
Guilford Last Day G81 (P)
Guilford Last Day Y88 (P)

DAM: GUILFORD LAST DAY N49 (P)

2023 FEBRUARY HEREFORD GROUP BREEDPLAN EBVs											
GL	Bwt	Milk	200wt	400wt	600wt	CWT	EMA	Rump	RBY%	IMF%	SS
-2.4	+6.3	+16	+45	+73	+104	+75	+7.2	+1.1	+1.9	+1.2	+1.6
57%	73%	57%	68%	69%	72%	59%	50%	59%	52%	54%	77%

Excellent bull by G.Landscape L138, growth, length and thickness. Has an excellent set of EBV's across the board, in the top 5% for 200 Day wt & EMA, top 10% for 600 Day wt and top 30% for IMF%. Stud Sire prospect. IEF DLF HYF MSUDF

Purchaser.....\$.....



LOT 11 GUILFORD TELEGRAM T070 (PP)

Born: 22/5/2022

Eye Pigment: 100/100

Reg: AJDT070

Scrotal Circum: 39.5 cm

SIRE: BOWEN QWADE Q064 (AI)(PP)

Otapawa Spark 3060(IMP NZL)(AI)(ET)(P)

Guilford Governor G38 (AI)(P)

Guilford Satin D49 (P)

DAM: GUILFORD SATIN P38 (P)

Guilford Zeus Z1 (AI)(S)

Guilford Satin F120 (P)

Guilford Satin Z88 (P)

2023 FEBRUARY HEREFORD GROUP BREEDPLAN EBVs											
GL	Bwt	Milk	200wt	400wt	600wt	CWT	EMA	Rump	RBY%	IMF%	SS
-1.0	+7.1	+16	+48	+74	+112	+76	+4.7	+1.1	+0.5	+0.8	+2.9
58%	73%	53%	67%	67%	70%	57%	48%	57%	50%	52%	75%

Long thick deep bodied bull combined with an excellent set of EBV's. Top 5% for 200, 600 Day wt & Cwt, top 30% for EMA. Stud Sire potential. IEF DLF HYF MSUDF

Purchaser.....\$.....

LOT 12 GUILFORD TANGO T012 (AI)(P)

Born: 01/5/2022

Eye Pigment: 100/100

Reg: AJDT012

Scrotal Circum: 40 cm

SIRE: CHURCHILL BROADWAY 858F (IMP USA)(PP)

TH 70R 11X Mr Hereford 34Z(IMP USA)(P)

Days Fahrenheit K103 (AI)(PP)

Days Marshall Lass H133 (PP)

DAM: GUILFORD QUEENIE Q7 (AI)(P)

Guilford Graduate G23 (AI)(P)

Guilford Queenie M82 M82 (P)

Guilford Queenie F74 (P)

2024 FEBRUARY HEREFORD GROUP BREEDPLAN EBVs											
GL	Bwt	Milk	200wt	400wt	600wt	CWT	EMA	Rump	RBY%	IMF%	SS
-0.8	+3.9	+16	+38	+70	+95	+62	+4.3	+2.1	+0.2	+0.7	+3.5
72%	73%	53%	68%	68%	70%	58%	51%	57%	49%	56%	74%

Attractive bull by Broadway with thickness, length and growth. Has an excellent set of EBV's across the board. IEF DLF HYF MSUDF Photo on back cover.

Purchaser.....\$.....

LOT 13 GUILFORD TERRITORY T034 (S)

Born: 09/5/2022

Eye Pigment: 100/100

Reg: AJDT034

Scrotal Circum: 42 cm

SIRE: GUILFORD PETROLEUM P24 (AI)(PP)

Otapawa Spark 3060(IMP NZL)(AI)(ET)(P)
Guilford Governor G38 (AI)(P)
Guilford Satin D49 (P)

DAM: GUILFORD VANITY N43 (P)

Allendale Washington C77 (AI)(PP)
Guilford Vanity J88 (P)
Guilford Vanity C113 (P)

2024 FEBRUARY HEREFORD GROUP BREEDPLAN EBVs											
GL	Bwt	Milk	200wt	400wt	600wt	CWT	EMA	Rump	RBY%	IMF%	SS
-0.9	+6.2	+25	+47	+82	+110	+72	+2.9	+3.2	-1.1	+1.1	+4.8
57%	73%	55%	68%	68%	71%	58%	49%	58%	52%	54%	76%

Easy doing, thick, deep bodied bull with good length and an excellent data set to match. Top 5% for 200,400, 600 Day wt & Cwt and rump fat, top 10% for milk and top 30% for IMF%. IEF DLF HYF MSUDF

Purchaser.....\$.....

LOT 14 GUILFORD THERAPIST T057 (PP)

Born: 17/5/2022

Eye Pigment: 100/100

Reg: AJDT057

Scrotal Circum: 35.5 cm

SIRE: GUILFORD LANDSCAPE L138 (PP)

Debarry Calgary C58 (P)
Allendale Bushman F119 (P)
Allendale Daisy C26 (AI)(P)

DAM: GUILFORD QUEENIE L33 (P)

Otapawa Spark 360(IMP NZL)(AI)(ET)(P)
Guilford Queenie G8 (AI)(P)
Guilford Queenie D82 (P)

2024 FEBRUARY HEREFORD GROUP BREEDPLAN EBVs											
GL	Bwt	Milk	200wt	400wt	600wt	CWT	EMA	Rump	RBY%	IMF%	SS
-1.5	+5.7	+18	+46	+69	+102	+72	+4.6	+1.5	+0.3	+1.5	0.0
59%	74%	59%	69%	69%	72%	59%	51%	59%	53%	56%	77%

Long high performance bull with an excellent set of EBV's across the board. In the top 5% for 200 Day wt & Cwt. Top 10% for 400 & 600 Day wt, top 15% for IMF, and top 30% for EMA. IEF DLF HYF MSUDF

Purchaser.....\$.....



Lot 11



Lot 13



Lot 14

LOT 15 GUILFORD TESTAMENT T069 (PP)

Born: 21/5/2022

Eye Pigment: 100/100

Reg: AJDT069

Scrotal Circum: 39 cm

SIRE: MAWARRA STAR ATTRACTION P033 (AI)(PP)

Allendale Bushman F119 (P)

Guilford Juggernaut J78 (P)

Guilford Queenie C65 (P)

DAM: GUILFORD QUEENIE N70 (P)

Guilford Zeus Z1 (AI)(S)

Guilford Queenie E99 (P)

Guilford Queenie Y60 (P)

2024 FEBRUARY HEREFORD GROUP BREEDPLAN EBVs											
GL	Bwt	Milk	200wt	400wt	600wt	CWT	EMA	Rump	RBY%	IMF%	SS
+0.9	+7.5	+21	+39	+66	+94	+54	+3.2	-2.3	+2.3	-0.4	+2.7
63%	74%	54%	68%	68%	71%	58%	49%	58%	51%	54%	76%

Long thick bull with excellent EBV's for growth and milk. Top 25% for 200, 400 & 600 Day wt. IEF DLF HYF MSUDF

Purchaser.....\$.....

LOT 16 GUILFORD TIMEKEEPER T077 (PP)

Born: 24/5/2022

Eye Pigment: 100/100

Reg: AJDT077

Scrotal Circum: 41.5 cm

SIRE: GUILFORD PETROLEUM P24 (AI)(PP)

Debarry Calgary C58 (P)

Allendale Bushman F119 (P)

Allendale Daisy C26 (AI)(P)

DAM: GUILFORD MISS BANGLE M48 (P)

Otapawa Spark 3060(IMP NZL)(AI)(ET)(P)

Guilford Miss Bangle G6 (AI)(P)

Guilford Miss Bangle D52 (P)

2024 FEBRUARY HEREFORD GROUP BREEDPLAN EBVs											
GL	Bwt	Milk	200wt	400wt	600wt	CWT	EMA	Rump	RBY%	IMF%	SS
-3.1	+4.1	+14	+40	+67	+94	+59	+2.7	+2.4	-0.7	+1.0	+3.6
58%	73%	55%	68%	68%	71%	58%	49%	58%	51%	54%	76%

Long Petroleum son with excellent growth, average Birth wt with EBV's in the top 20% for 400 & 600 Day wt and top 15% for Rump fat. IEF DLF HYF MSUDF

Purchaser.....\$.....



LOT 17 GUILFORD TITANIUM T103 (P)

Born: 21/6/2022

Eye Pigment: 100/100

Reg: AJDT103

Scrotal Circum: 39 cm

SIRE: GUILFORD NUCLEAR N19 (P)

Allendale Washington C77 (AI)(PP)
Guilford Jeweller J29 (S)
Guilford Queenie C101 (P)
DAM: GUILFORD QUEENIE M49 (P)
Heatherdale Territory A62 (AI)(P)
Guilford Queenie G59 (P)
Guilford Queenie A14 (P)

2024 FEBRUARY HEREFORD GROUP BREEDPLAN EBVs											
GL	Bwt	Milk	200wt	400wt	600wt	CWT	EMA	Rump	RBY%	IMF%	SS
-0.8	+6.5	+17	+51	+81	+114	+72	+2.7	-0.7	+1.1	-0.7	+0.8
56%	73%	52%	67%	67%	71%	57%	48%	57%	50%	53%	77%

Attractive long deep high performance Nuclear son combined with EBV's that put him in the top 1% for 200 & 400 Day wt, top 5% for 600 Day wt & Carcase wt. IEF DLF HYF MSUDF

Purchaser.....\$.....

LOT 18 GUILFORD TOWNSMAN T037 (P)

Born: 09/5/2022

Eye Pigment: 100/100

Reg: AJDT037

Scrotal Circum: 41 cm

SIRE: GUILFORD JOCULAR J139 (PP)

Tobruk Jedi (ET)(PP)
Wirunna Legs L108 (AI)(PP)
Wirunna Golden Vanity D88 (AI)(P)
DAM: GUILFORD ELEANOR Q56 (P)
Debarry Eden (PP)
Guilford Eleanor D91 (P)
Guilford Eleanor Z5 (AI)(P)

2024 FEBRUARY HEREFORD GROUP BREEDPLAN EBVs											
GL	Bwt	Milk	200wt	400wt	600wt	CWT	EMA	Rump	RBY%	IMF%	SS
-2.0	+4.9	+23	+40	+70	+100	+66	+5.4	+2.2	+1.3	+1.0	+4.3
59%	74%	59%	69%	70%	73%	60%	51%	59%	53%	55%	78%

Long thick easy doing bull by Jocular J139 with an excellent set of EBV's across the board to match. In the top 15% for 400 & 600 Day wt, top 5% for scrotal, top 10% for Milk and top 20% for EMA & rump fat. IEF DLF HYF MSUDF

Purchaser.....\$.....



LOT 19 GUILFORD TEACHER T042 (PP)

Born: 13/5/2022

Eye Pigment: 100/100

Reg: AJDT042

Scrotal Circum: 39 cm

SIRE: GUILFORD LANDSCAPE L138 (PP)

Debarry Calgary C58 (P)

Allendale Bushman F119 (P)

Allendale Daisy C26 (AI)(P)

DAM: GUILFORD LADY JESSIE L50 (P)

Heatherdale Territory A62 (AI)(P)

Guilford Lady Jessie D77 (P)

Guilford Lady Jessie A87 (P)

2024 FEBRUARY HEREFORD GROUP BREEDPLAN EBVs

GL	Bwt	Milk	200wt	400wt	600wt	CWT	EMA	Rump	RBY%	IMF%	SS
-0.4	+6.6	+14	+43	+71	+104	+72	+6.7	+3.0	+1.2	+0.7	+2.1
57%	73%	57%	68%	68%	71%	58%	49%	57%	51%	53%	76%

Another good long bull by L138 with an excellent set of figures in the top 15% for 200, 600 Day wt & Cwt, top 10% for EMA, top 5% for rump fat and top 30% for IMF%. IEF DLF HYF MSUDF

Purchaser.....\$.....

LOT 20 GUILFORD TERRACOTTA T085 (PP)

Born: 31/5/2022

Eye Pigment: 80/100

Reg: AJDT085

Scrotal Circum: 38 cm

SIRE: GUILFORD NUCLEAR N19 (P)

Debarry Calgary C58 (P)

Allendale Bushman F119 (P)

Allendale Daisy C26 (AI)(P)

DAM: GUILFORD ELEANOR K101 (P)

Debarry Eden (PP)

Guilford Eleanor D46 (P)

Guilford Eleanor X1 (AI)(P)

2024 FEBRUARY HEREFORD GROUP BREEDPLAN EBVs

GL	Bwt	Milk	200wt	400wt	600wt	CWT	EMA	Rump	RBY%	IMF%	SS
-2.0	+4.1	+18	+39	+77	+107	+76	+5.1	+0.3	+1.4	+0.4	+1.4
58%	74%	55%	69%	69%	72%	59%	51%	59%	52%	55%	77%

N19 son with very good length, thickness and growth. Excellent set of EBVs to match him, top 30% for GL & EMA. Top 5% for 400 & 600 Day wt and Carcase wt. IEF DLF HYF MSUDF

Purchaser.....\$.....

LOT 21 GUILFORD TRANSLATOR T090 (P)

Born: 06/6/2022

Eye Pigment: 100/100

Reg: AJDT090

Scrotal Circum: 37 cm

SIRE: GUILFORD PATRIOT P23 (PP)

Allendale Anzac E114 (PP)

Guilford Anzac M30 (AI)(P)

Guilford Zinnia B114 (P)

DAM: GUILFORD DELYSIA Q61 (P)

Guilford Future F81 (P)

Guilford Delysia J148 (P)

Guilford Delysia E35 (P)

2024 FEBRUARY HEREFORD GROUP BREEDPLAN EBVs

GL	Bwt	Milk	200wt	400wt	600wt	CWT	EMA	Rump	RBY%	IMF%	SS
+0.2	+5.5	+28	+44	+71	+100	+63	+4.1	+1.4	+0.7	+1.0	+3.0
58%	72%	54%	67%	67%	71%	57%	49%	57%	51%	54%	76%

Translator is a very good bull by Guilford Patriot P23, long bodied bull with excellent growth and EBVs to match. Top 10% for 200 Day wt, top 15% for 400 & 600 Day wt and top 5% for milk. Stud Sire prospect. IEF DLF HYF MSUDF
Photo on back cover.

Purchaser.....\$.....

LOT 22 GUILFORD THISTLE T106 (S)

Born: 25/6/2022

Eye Pigment: 100/100

Reg: AJDT106

Scrotal Circum: 38 cm

SIRE: GUILFORD PATRIOT P23 (PP)

Tobruk Jedi (ET)(PP)

Wirruna Legs L108 (AI)(PP)

Wirruna Golden Vanity D88 (AI)(P)

DAM: GUILFORD QUEENIE Q44 (P)

Allendale Bushman F119 (P)

Guilford Queenie K35 (P)

Guilford Queenie D82 (P)

2024 FEBRUARY HEREFORD GROUP BREEDPLAN EBVs

GL	Bwt	Milk	200wt	400wt	600wt	CWT	EMA	Rump	RBY%	IMF%	SS
-0.4	+5.1	+24	+45	+83	+111	+73	+5.1	-0.4	+2.2	+0.7	+3.1
58%	72%	54%	67%	67%	70%	57%	49%	57%	51%	55%	76%

Another long P23 son with an excellent set of EBV's across the board to match him. In the top 5% for 200 & 400 Day wt, top 20% for milk and top 25% for EMA. IEF DLF HYF MSUDF

Purchaser.....\$.....



Lot 22



Lot 23



Lot 24

LOT 23 GUILFORD TRADER T114 (PP)

Born: 09/7/2023

Eye Pigment: 100/100

Reg: AJDT114

Scrotal Circum: 39 cm

SIRE: MAWARRA STAR ATTRACTION P033 (AI)(PP)

Okawa Commodore 020076(IMP NZL)(P)
Allendale Washington C77 (AI)(PP)
Allendale Fancy Z59 (P)

DAM: GUILFORD QUEENIE F74 (P)

Mt. Raven Hijacker (AI)(P)
Guilford Queenie B54 (P)
Guilford Queenie Y23 (AI)(P)

2024 FEBRUARY HEREFORD GROUP BREEDPLAN EBVs											
GL	Bwt	Milk	200wt	400wt	600wt	CWT	EMA	Rump	RBY%	IMF%	SS
+1.4	+5.5	+19	+35	+64	+91	+52	+2.6	+1.5	-0.6	+1.5	+3.4
64%	74%	57%	69%	69%	72%	59%	51%	59%	53%	55%	77%

Good looking Star Attraction son with good weight for age, growth, length & thickness. In the top 25% for 400 & 600 Day wt and top 10% for IMF%. IEF DLF HYF MSUDF

Purchaser.....\$.....

LOT 24 GUILFORD TOURIST T024 (PP)

Born: 06/5/2022

Eye Pigment: 100/100

Reg: AJDT024

Scrotal Circum: 38 cm

SIRE: GUILFORD JOCULAR J139 (PP)

Tobruk Jedi (ET)(PP)
Wirruna Legs L108 (AI)(PP)
Wirruna Golden Vanity D88 (AI)(P)

DAM: GUILFORD QUEENIE Q31 (P)

Otapawa Spark 3060(IMP NZL)(AI)(ET)(P)
Guilford Queenie G8 (AI)(P)
Guilford Queenie D82 (P)

2024 FEBRUARY HEREFORD GROUP BREEDPLAN EBVs											
GL	Bwt	Milk	200wt	400wt	600wt	CWT	EMA	Rump	RBY%	IMF%	SS
-2.8	+1.1	+19	+26	+41	+52	+41	+3.8	+5.4	-0.9	+1.1	+1.5
57%	73%	57%	68%	68%	71%	59%	50%	58%	52%	55%	76%

Long, thick, easy doing low birthweight bull. Excellent carcass figures top 1% for rump fat and top 25% for IMF%. Top 30% for milk. IEF DLF HYF MSUDF

Purchaser.....\$.....

LOT 25 GUILFORD TOBACCO T047 (S)

Born: 14/5/2022 Eye Pigment: 100/100
Reg: AJDT047 Scrotal Circum: 35 cm

SIRE: BOWEN QWADE Q064 (AI)(PP)

Otapawa Spark 3060(IMP NZL)(AI)(ET)(P)
Guilford Governor G38 (AI)(P)
Guilford Satin D49 (P)

DAM: GUILFORD CORA N92 (P)
Morganvale Detonator (P)
Guilford Cora J141 (P)
Guilford Cora D30 (P)

2024 FEBRUARY HEREFORD GROUP BREEDPLAN EBVs											
GL	Bwt	Milk	200wt	400wt	600wt	CWT	EMA	Rump	RBV%	IMF%	SS
+1.5	+2.4	+16	+32	+58	+76	+56	+4.2	+1.9	+0.1	+1.0	+1.5
57%	72%	52%	67%	67%	70%	56%	47%	56%	49%	51%	75%

Soft, easy doing, deep bodied bull with low birth weight and good growth and carcass EBV's. IEF DLF HYF MSUDF

Purchaser.....\$.....

LOT 26 GUILFORD TORQUE T062 (PP)

Born: 18/5/2022 Eye Pigment: 100/100
Reg: AJDT062 Scrotal Circum: 40.5 cm

SIRE: GUILFORD JOCULAR J139 (PP)

Allendale National W168 (PP)
Guilford National N4 (PP)
Guilford Lady Jessie K6 (AI)(P)

DAM: GUILFORD CORA Q107 (P)
Guilford Jeweller J29 (S)
Guilford Cora M50 (P)
Guilford Cora D30 (P)

2024 FEBRUARY HEREFORD GROUP BREEDPLAN EBVs											
GL	Bwt	Milk	200wt	400wt	600wt	CWT	EMA	Rump	RBV%	IMF%	SS
-3.4	+5.1	+18	+40	+60	+82	+52	+2.8	+2.0	-0.1	+0.5	+2.7
56%	73%	57%	68%	69%	72%	59%	50%	59%	52%	54%	77%

Long thick easy doing bull with good growth and positive fat figures. In the top 20% for 200 Day wt and top 15% for rump fat. IEF DLF HYF MSUDF

Purchaser.....\$.....



LOT 27 GUILFORD TRANSMISSION T096 (PP)

Born: 14/6/2022

Eye Pigment: 100/100

Reg: AJDT096

Scrotal Circum: 39 cm

SIRE: MAWARRA STAR ATTRACTION P033 (AI)(PP)

Debarry Calgary C58 (P)
Allendale Bushman F119 (P)
Allendale Daisy C26 (AI)(P)

DAM: GUILFORD QUEENIE J137 (P)
Wirreanda Allison G12 (P)
Guilford Queenie X19 (AI)(P)
Guilford Queenie U16 (AI)(P)

2024 FEBRUARY HEREFORD GROUP BREEDPLAN EBVs											
GL	Bwt	Milk	200wt	400wt	600wt	CWT	EMA	Rump	RBY%	IMF%	SS
+1.9	+6.3	+23	+38	+69	+96	+61	+4.8	+3.0	+0.1	+1.3	+4.0
64%	74%	55%	68%	68%	71%	58%	50%	58%	51%	54%	73%

Thick, deep Star Attraction son combined with very good data across the board. Top 10% for milk & Rump fat, top 15% for 600 Day wt, top 25% for IMF and top 30% for EMA. IEF DLF HYF MSUDF.

Purchaser.....\$.....

LOT 28 GUILFORD TECTONIC T099 (PP)

Born: 17/6/2022

Eye Pigment: 100/100

Reg: AJDT099

Scrotal Circum: 41 cm

SIRE: GUILFORD PETROLEUM P24 (AI)(P)

Allendale Bushman F119 (P)
Guilford Jocular J139 (PP)
Guilford Eleanor (P)

DAM: GUILFORD QUEENIE N90 (P)
Allendale Washington C77 (AI)(PP)
Guilford Queenie H79 (P)
Guilford Queenie B7 (AI)(P)

2024 FEBRUARY HEREFORD GROUP BREEDPLAN EBVs											
GL	Bwt	Milk	200wt	400wt	600wt	CWT	EMA	Rump	RBY%	IMF%	SS
+0.2	+3.6	+21	+35	+63	+85	+52	+1.2	+4.0	-1.6	+0.7	+4.3
58%	73%	55%	68%	68%	71%	58%	49%	57%	51%	53%	76%

Tectonic is a long easy doing bull with good growth, lower birth wt, and in the top 20% for milk and top 1% for rump fat. IEF DLF HYF MSUDF

Purchaser.....\$.....

LOT 29 GUILFORD TANGERINE T117 (PP)

Born: 10/7/2022 Eye Pigment: 100/100
Reg: AJDT117 Scrotal Circum: 39.5 cm

SIRE: MAWARRA STAR ATTRACTION P033 (AI)(PP)

Allendale Washington C77 (AI)(PP)
Guilford Jeweller J29 (S)
Guilford Queenie C101 (P)

DAM: GUILFORD ELEANOR M22 (P)
Heatherdale Territory A62 (AI)(P)
Guilford Eleanor E55 (P)
Guilford Eleanor Z55 (P)

2024 FEBRUARY HEREFORD GROUP BREEDPLAN EBVs											
GL	Bwt	Milk	200wt	400wt	600wt	CWT	EMA	Rump	RBY%	IMF%	SS
+3.4	+8.4	+22	+46	+76	+107	+60	+2.3	-0.3	+0.6	+0.5	+3.0
61%	73%	52%	67%	67%	70%	57%	48%	57%	50%	52%	75%

Attractive high performance long bodied bull in the top 5% for 200 & 400 Day wt, top 10% for 600 Day wt, and top 15% for milk. IEF DLF HYF MSUDF

Purchaser.....\$.....

LOT 30 GUILFORD TWILIGHT T072 (P)

Born: 22/5/2022 Eye Pigment: 100/100
Reg: AJDT072 Scrotal Circum: 36 cm

SIRE: BOWEN QWADE Q064 (AI)(PP)

Otapawa Spark 3060(IMP NZL)(AI)(ET)(P)
Guilford Governor G38 (AI)(P)
Guilford Satin D49 (P)

DAM: GUILFORD CORA P141 (P)
Allendale Washington C77 (AI)(PP)
Guilford Cora F37 (P)
Guilford Cora Y42 (P)

2024 FEBRUARY HEREFORD GROUP BREEDPLAN EBVs											
GL	Bwt	Milk	200wt	400wt	600wt	CWT	EMA	Rump	RBY%	IMF%	SS
+2.5	+4.8	+16	+39	+60	+83	+56	+3.2	+2.3	-0.8	+1.2	+1.1
58%	72%	52%	67%	67%	70%	57%	48%	56%	50%	52%	76%

Soft, easy doing, long, deep bull with good growth and weight for age. Top 30% for 200 Day wt, top 15% for rump fat and top 20% for IMF. IEF DLF HYF MSUDF

Purchaser.....\$.....



Lot 28



Lot 29



Lot 30

LOT 31 GUILFORD THEOLOGIAN T100 (PP)

Born: 19/6/2022

Eye Pigment: 100/100

Reg: AJDT100

Scrotal Circum: 36 cm

SIRE: GUILFORD NUCLEAR N19 (P)

Allendale Washington C77 (AI)(PP)

Guilford Future F81 (P)

Guilford Eleanor B64 (P)

DAM: GUILFORD QUEENIE J58 (P)

Guilford Atomic A3 (AI)(ET)(P)

Guilford Queenie E91 (P)

Guilford Queenie A102 (P)

2024 FEBRUARY HEREFORD GROUP BREEDPLAN EBVs											
GL	Bwt	Milk	200wt	400wt	600wt	CWT	EMA	Rump	RBY%	IMF%	SS
-0.6	+3.9	+26	+35	+63	+87	+60	+4.2	+1.3	+1.2	+0.1	+0.3
59%	74%	56%	69%	69%	72%	59%	50%	58%	51%	55%	77%

Long N19 son with lower birth weight and good growth, muscle and positive fat. High milk in the top 5%. IEF DLF HYF MSUDF

Purchaser.....\$.....

LOT 32 GUILFORD TRANSLUCENT T101 (PP)

Born: 19/6/2022

Eye Pigment: 100/100

Reg: AJDT101

Scrotal Circum: 37 cm

SIRE: GUILFORD PETROLEUM P24 (AI)(PP)

Otapawa Spark 3060(IMP NZL)(AI)(ET)(P)

Guilford Governor G38 (AI)(P)

Guilford Satin D49 (P)

DAM: GUILFORD DELYSIA N56 (P)

Guilford Future F81 (P)

Guilford Delysia J148 (P)

Guilford Delysia E35 (P)

2024 FEBRUARY HEREFORD GROUP BREEDPLAN EBVs											
GL	Bwt	Milk	200wt	400wt	600wt	CWT	EMA	Rump	RBY%	IMF%	SS
-0.1	+6.8	+22	+43	+71	+102	+63	+3.9	+1.7	+0.1	+0.4	+3.0
58%	73%	54%	67%	68%	71%	58%	49%	58%	51%	54%	76%

Petroleum son with good length and growth combined with very good EBVs in the top 15% for 200, 400 & 600 Day wt, top 30% for rump fat and top 20% for Milk. IEF DLF HYF MSUDF

Purchaser.....\$.....

LOT 33 GUILFORD TYPHOON T119 (S)

Born: 12/7/2022

Eye Pigment: 100/100

Reg: AJDT119

Scrotal Circum: 38 cm

SIRE: GUILFORD PATRIOT P23 (PP)

Kidman Legacy D155 (S)

Kidman Biography H008 (S)

Kidman Shamrock E254(AI)(ET)(PP)

DAM: GUILFORD QUEENIE R011 (AI)(P)

Guilford Juggernaut J78 (P)

Guilford Queenie N70 (P)

Guilford Queenie E99 (P)

2024 FEBRUARY HEREFORD GROUP BREEDPLAN EBVs											
GL	Bwt	Milk	200wt	400wt	600wt	CWT	EMA	Rump	RBY%	IMF%	SS
-2.6	+4.7	+25	+41	+65	+92	+59	+2.5	+0.3	+0.9	+0.3	+2.6
60%	71%	52%	66%	65%	67%	55%	47%	56%	47%	53%	69%

Very good P23 son with good length and growth. Average birthweight, top 20% for milk and top 25% for 200 Day wt. IEF DLF HYF MSUDF

Purchaser.....\$.....

LOT 34 GUILFORD TARNISH T123 (PP)

Born: 20/7/2022

Eye Pigment: 100/100

Reg: AJDT123

Scrotal Circum: 36 cm

SIRE: BOWEN QWADE Q064 (AI)(PP)

KCF Bennett Revolution X51(IMP USA)(P)

Wirruna Leap Forward L95 (ET)(PP)

Wirruna Midge F322 (P)

DAM: GUILFORD SATIN P013 (P)

Morganvale Detonator (P)

Guilford Satin L146 (P)

Guilford Satin B87 (P)

2024 FEBRUARY HEREFORD GROUP BREEDPLAN EBVs											
GL	Bwt	Milk	200wt	400wt	600wt	CWT	EMA	Rump	RBY%	IMF%	SS
-2.3	+4.3	+21	+39	+63	+90	+62	+5.9	+1.9	+0.8	+0.8	+2.2
59%	72%	52%	67%	67%	70%	57%	47%	56%	50%	52%	75%

Soft easy doing, slick coated Qwade son. Very good EBVs in the top 30% for milk & rump fat and top 15% for EMA. IEF DLF HYF MSUDF

Purchaser.....\$.....



LOT 35 GUILFORD TARMAc T023 (P)

Born: 06/5/2022

Eye Pigment: 100/100

Reg: AJDT023

Scrotal Circum: 39 cm

SIRE: GUILFORD JOCULAR J139 (PP)

Tobruk Jedi (ET)(PP)

Wirruna Legs L108 (AI)(PP)

Wirruna Golden Vanity D88 (AI)(P)

DAM: GUILFORD VANITY Q17 (P)

Guilford Zeus Z1 (AI)(S)

Guilford Vanity G77 (P)

Guilford Vanity Z60 (P)

2024 FEBRUARY HEREFORD GROUP BREEDPLAN EBVs											
GL	Bwt	Milk	200wt	400wt	600wt	CWT	EMA	Rump	RBY%	IMF%	SS
-2.9	+3.1	+17	+28	+53	+70	+49	+4.3	+2.3	+0.9	+0.1	+3.7
56%	73%	56%	67%	68%	71%	58%	49%	58%	51%	53%	76%

Thick easy doing bull with low birthweight and very good EMA and rump fat EBVs. IEF DLF HYF MSUDF

Purchaser.....\$.....

LOT 36 GUILFORD TREASURER T089 (PP)

Born: 03/6/2022

Eye Pigment: 100/100

Reg: AJDT089

Scrotal Circum: 37 cm

SIRE: GUILFORD LANDSCAPE L138 (PP)

Debarry Eden (PP)

Guilford Graduate G23 (AI)(P)

Guilford Cindy D100(P)

DAM: GUILFORD FLIRT L92 (P)

Allendale Washington C77 (AI)(PP)

Guilford Flirt F28 (P)

Guilford Flirt Z29 (AI)(P)

2024 FEBRUARY HEREFORD GROUP BREEDPLAN EBVs											
GL	Bwt	Milk	200wt	400wt	600wt	CWT	EMA	Rump	RBY%	IMF%	SS
+0.2	+2.3	+16	+27	+34	+44	+38	+4.0	+3.8	-0.7	+1.1	+1.3
58%	75%	58%	69%	69%	72%	59%	50%	59%	52%	55%	77%

Long bull with good thickness and a good set of EBVs for EMA, fat and IMF. Lower birth weight. IEF DLF HYF MSUDF

Purchaser.....\$.....



LOT 37 GUILFORD TEARAWAY T093 (PP)

Born: 10/6/2022 Eye Pigment: 100/100
Reg: AJDT093 Scrotal Circum: 38 cm

SIRE: GUILFORD PATRIOT P23 (PP)

Allendale Anzac E114 (PP)
Guilford Anzac M16 (AI)(P)
Guilford Queenie J150 (P)
DAM: GUILFORD MISS BANGLE Q95 (P)
Allendale Bushman F119 (P)
Guilford Miss Bangle L80 (P)
Guilford Miss Bangle A65 (P)

2024 FEBRUARY HEREFORD GROUP BREEDPLAN EBVs											
GL	Bwt	Milk	200wt	400wt	600wt	CWT	EMA	Rump	RBY%	IMF%	SS
-2.5	+4.2	+28	+43	+61	+91	+64	+4.2	+0.2	+1.7	+0.6	+1.4
57%	72%	52%	66%	67%	70%	57%	48%	57%	50%	53%	76%

This bull deserves a close look, good length and thickness and an excellent set of EBV's across the board. Average birthweight, top 15% for 200 Day wt and top 5% for milk. Very good carcass EBV's. His dam did a super job in 2023 weaning twin bull calves under drought conditions. IEF DLF HYF MSUDF

Purchaser.....\$.....

LOT 38 GUILFORD TRADESMAN T105 (PP)

Born: 15/6/2022 Eye Pigment: 100/95
Reg: AJDT105 Scrotal Circum: 37.5 cm

SIRE: GUILFORD PATRIOT P23 (PP)

Tobruk Jedi (ET)(PP)
Wirruna Legs L108 (AI)(PP)
Wirruna Golden Vanity D88 (AI)(P)
DAM: GUILFORD QUEENIE Q108 (P)
Allendale Bushman F119(P)
Guilford Queenie K99 (P)
Guilford Queenie A14 (P)

2024 FEBRUARY HEREFORD GROUP BREEDPLAN EBVs											
GL	Bwt	Milk	200wt	400wt	600wt	CWT	EMA	Rump	RBY%	IMF%	SS
-3.8	+2.3	+27	+36	+59	+75	+58	+4.1	+1.3	+0.7	+0.8	+2.7
57%	72%	53%	67%	67%	70%	57%	49%	57%	50%	54%	75%

Low birthweight bull with good length and thickness. In the top 5% for milk, with good EMA and Rump fat EBV's. IEF DLF HYF MSUDF

Purchaser.....\$.....



Lot 37



Lot 38



Lot 39

LOT 39 GUILFORD TIRADE T122 (P)

Born: 18/7/2022

Eye Pigment: 100/100

Reg: AJDT122

Scrotal Circum: 41 cm

SIRE: MAWARRA STAR ATTRACTION P033 (A)(PP)

Debarry Calgary C58 (P)

Allendale Bushman F119 (P)

Allendale Daisy C26 (AI)(P)

DAM: GUILFORD QUEENIE L75 (P)

Debarry Eden (PP)

Guilford Queenie C65 (P)

Guilford Queenie V10 (AI)(P)

2024 FEBRUARY HEREFORD GROUP BREEDPLAN EBVs											
GL	Bwt	Milk	200wt	400wt	600wt	CWT	EMA	Rump	RBY%	IMF%	SS
+1.8	+7.3	+20	+37	+67	+94	+51	+3.4	-1.1	+1.5	+0.1	+5.0
63%	73%	54%	68%	68%	71%	58%	50%	58%	52%	54%	76%

Tirade is an eye catching son of Star Attraction with good length and growth, he is in the top 30% for milk and top 25% for 600 Day wt, as well as top 1% for scrotal size. IEF DLF HYF MSUDF

Purchaser.....\$.....

LOT 40 GUILFORD TACTICIAN T144 (PP)

Born: 03/9/2022

Eye Pigment: 100/100

Reg: AJDT144

Scrotal Circum: 36 cm

SIRE: GUILFORD NUCLEAR N19 (P)

Debarry Eden (PP)

Guilford Graduate G23 (AI)(P)

Guilford Cindy D100 (P)

DAM: GUILFORD SATIN M125 (P)

Allendale Washington C77 (AI)(PP)

Guilford Satin F27 (P)

Guilford Satin A8 (AI)(P)

2024 FEBRUARY HEREFORD GROUP BREEDPLAN EBVs											
GL	Bwt	Milk	200wt	400wt	600wt	CWT	EMA	Rump	RBY%	IMF%	SS
-2.9	+5.5	+19	+46	+81	+114	+79	+4.2	+0.1	+1.2	-0.1	+1.4
57%	72%	52%	67%	66%	68%	55%	48%	56%	47%	53%	66%

Youngest bull in the sale with excellent length and weight for age matched by a very good set of EBV's. In the top 5% for 200, 400 & 600 Day wt and top 20% for milk. IEF DLF HYF MSUDF

Purchaser.....\$.....



LOT 41 GUILFORD TIMBRE T120 (P)

Born: 14/7/2022

Eye Pigment: 100/100

Reg: AJDT120

Scrotal Circum: 40 cm

SIRE: GUILFORD PATRIOT P23 (PP)

Kidman Legacy D155 (S)

Kidman Biography H008 (S)

Kidman Shamrock E254 (AI)(ET)(P)

DAM: GUILFORD QUEENIE R002 (AI)(P)

Days Fahrenheit K103 (AI)(PP)

Guilford Queenie N21 (P)

Guilford Queenie K99 (P)

2024 FEBRUARY HEREFORD GROUP BREEDPLAN EBVs											
GL	Bwt	Milk	200wt	400wt	600wt	CWT	EMA	Rump	RBV%	IMF%	SS
-3.1	+3.9	+18	+41	+69	+91	+64	+4.4	+1.6	+1.0	+0.8	+3.4
61%	71%	53%	66%	66%	67%	55%	48%	56%	47%	54%	69%

Deep, easy doing lower birthweight bull with good length. In the top 25% for 200 Day wt, top 30% for rump fat, and top 10% for scrotal size. IEF DLF HYF MSUDF

Purchaser.....\$.....

LOT 42 GUILFORD TAXPAYER T125 (TW)(S)

Born: 20/7/2022

Eye Pigment: 100/100

Reg: AJDT125

Scrotal Circum: 38 cm

SIRE: MAWARRA STAR ATTRACTION P033 (AI)(PP)

Kidman Legacy D155 (S)

Kidman Biography H008 (S)

Kidman Shamrock E254 (AI)(ET)(P)

DAM: GUILFORD QUEENIE L91 (P)

Guilford Zeus Z1 (AI)(S)

Guilford Queenie C1 (AI)(P)

Guilford Queenie Y44 (P)

2024 FEBRUARY HEREFORD GROUP BREEDPLAN EBVs											
GL	Bwt	Milk	200wt	400wt	600wt	CWT	EMA	Rump	RBV%	IMF%	SS
+0.9	+2.9	+19	+30	+56	+83	+57	+3.5	+1.2	+0.5	+1.2	+2.4
64%	70%	53%	68%	67%	68%	56%	48%	57%	47%	54%	66%

Star Attraction son showing length and growth, with a good set of figures across the board. Top 30% for IMF and top 40% for birthweight. IEF DLF HYF MSUDF

Purchaser.....\$.....

LOT 43 GUILFORD TRUSTEE T132 (PP)

Born: 06/8/2022

Eye Pigment: 100/100

Reg: AJDT132

Scrotal Circum: 38 cm

SIRE: BOWEN QWADE Q064 (AI)(PP)

Allendale Washington C77 (AI)(PP)

Guilford Future F81 (P)

Guilford Eleanor B64 (P)

DAM: GUILFORD DELYSIA K127 (P)

Debarry Eden (PP)

Guilford Delysia C64 (P)

Guilford Delysia V124 (P)

2024 FEBRUARY HEREFORD GROUP BREEDPLAN EBVs											
GL	Bwt	Milk	200wt	400wt	600wt	CWT	EMA	Rump	RBY%	IMF%	SS
+2.0	+3.4	+19	+33	+56	+78	+56	+4.1	+1.4	-0.2	+0.9	+1.6
59%	71%	53%	67%	66%	67%	54%	46%	55%	46%	52%	66%

Lower birthweight bull with good growth, milk and carcass EBVs.
IEF DLF HYF MSUDF.

Purchaser.....\$.....

LOT 44 GUILFORD TERRAIN T136 (PP)

Born: 10/8/2022

Eye Pigment: 100/100

Reg: AJDT136

Scrotal Circum: 35 cm

SIRE: BOWEN QWADE Q064 (AI)(PP)

Okawa Commodore 020076(IMP NZL)(P)

Allendale Washington C77 (AI)(PP)

Allendale Fancy Z59 (P)

DAM: GUILFORD CORA J106 (P)

Debarry Eden (PP)

Guilford Cora D28 (P)

Guilford Cora Y33 (AI)(P)

2024 FEBRUARY HEREFORD GROUP BREEDPLAN EBVs											
GL	Bwt	Milk	200wt	400wt	600wt	CWT	EMA	Rump	RBY%	IMF%	SS
+0.1	+4.3	+15	+36	+62	+86	+57	+3.8	-0.5	+1.1	+0.6	+2.2
59%	72%	54%	67%	68%	71%	58%	49%	57%	51%	53%	76%

Attractive bull by Bowen Qwade Q064, with good length and thickness and a good balanced set of figures to match. IEF DLF HYF MSUDF

Purchaser.....\$.....



Lot 43



Lot 44



Lot 45

LOT 45 GUILFORD THESAURUS T138 (PP)

Born: 15/8/2022

Eye Pigment: 100/100

Reg: AJDT138

Scrotal Circum: 41 cm

SIRE: GUILFORD PETROLEUM P24 (AI)(PP)

Debarry Calgary C58 (P)

Allendale Bushman F119 (P)

Allendale Daisy C26 (AI)(P)

DAM: GUILFORD LAST DAY J122 (P)

Allendale Landlord 3 (AI)(P)

Guilford Last Day A91 (P)

Guilford Last Day U19 (AI)(P)

2024 FEBRUARY HEREFORD GROUP BREEDPLAN EBVs											
GL	Bwt	Milk	200wt	400wt	600wt	CWT	EMA	Rump	RBY%	IMF%	SS
-0.9	+5.1	+17	+34	+56	+79	+49	+4.9	+3.6	0.0	+1.3	+4.2
60%	73%	57%	68%	68%	71%	59%	50%	58%	52%	54%	76%

Younger bull with length, matched with a very good set of EBV's. In the top 25% for EMA, top 5% for rump, and top 15% for IMF. IEF DLF HYF MSUDF.

Purchaser.....\$.....

5 REGISTERED U HEIFERS**LOT 46 GUILFORD DELYSIA U028 (PP)**

Born: 08/5/2023

Eye Pigment: 100/100

Reg: AJDU026

SIRE: BOWEN QWADE Q064 (AI)(PP)

Wirruna Kalimna K326 (PP)

Guilford Patriot P23 (PP)

Guilford Queenie M9 (AI)(P)

DAM: GUILFORD DELYSIA S042 (P)

Guilford Governor G38 (AI)(P)

Guilford Delysia N56 (P)

Guilford Delysia J148 (P)

2024 FEBRUARY HEREFORD GROUP BREEDPLAN EBVs											
GL	Bwt	Milk	200wt	400wt	600wt	CWT	EMA	Rump	RBY%	IMF%	SS
+0.7	+5.5	+22	+46	+74	+103	+71	+5.0	+0.2	+1.1	+0.9	+2.1
50%	70%	44%	64%	59%	61%	49%	41%	50%	43%	47%	56%

Good Bowen Qwade Q064 daughter, with an excellent data set to match. Top 10% for 400 & 600 Day wt and milk. IEF DLF HYF MSUDF.

Purchaser.....\$.....

LOT 47 GUILFORD CORA U029 (PP)

Born: 08/5/2023

Eye Pigment: 100/100

Reg: AJDU029

Mount Difficult Cadbury (AI)(P)
 Tobruk Maverick (AI)(PP)
 Tobruk Daisy (AI)(P)

SIRE: YAVENVALE POWERHOUSE P499 (PP)
 Koanui Techno 3062(IMP NZL)(PP)
 Yavenvale Lochiel Lady M385 (AI)(S)
 Yavenvale Lochiel Lady J411 (H#)

Otapawa Spark 3060(IMP NZL)(AI)(ET)(P)
 Guilford Governor G38 (AI)(P)
 Guilford Satin D49 (P)

DAM: GUILFORD CORA R053 (P)
 Allendale Washington C77(AI)(PP)
 Guilford Cora J106 (P)
 Guilford Cora D28 (P)

2024 FEBRUARY HEREFORD GROUP BREEDPLAN EBVs											
GL	Bwt	Milk	200wt	400wt	600wt	CWT	EMA	Rump	RBY%	IMF%	SS
+0.6	+5.1	+17	+39	+66	+92	+62	+4.5	+0.9	+0.4	+1.2	+1.8
51%	71%	46%	64%	60%	61%	50%	43%	51%	44%	49%	57%

Powerhouse heifer with good length, and matched by a very good set of performance figures across the board. IEF DLF HYF MSUDF.

Purchaser.....\$.....

LOT 48 GUILFORD QUEENIE U040 (P)

Born: 12/5/2023

Eye Pigment: 100/100

Reg: AJDU040

SIRE: GUILFORD NUCLEAR N19 (P)

Kidman Legacy D155 (S)
 Kidman Biography H008 (S)
 Kidman Shamrock E254(AI)(ET)(PP)

DAM: GUILFORD QUEENIE M14 (AI)(P)
 Morganvale Detonator (P)
 Guilford Queenie J158 (P)
 Guilford Queenie D12 (P)

2023 FEBRUARY HEREFORD GROUP BREEDPLAN EBVs											
GL	Bwt	Milk	200wt	400wt	600wt	CWT	EMA	Rump	RBY%	IMF%	SS
-2.3	+4.2	+20	+40	+65	+93	+60	+3.4	+1.9	+0.1	+0.6	+1.8
54%	72%	50%	66%	62%	64%	54%	47%	55%	47%	52%	62%

Very nice N19 daughter, below breed average birth weight but in the top 30% for 600 Day wt. IEF DLF HYF MSUDF.

Purchaser.....\$.....



Lot 46



Lot 47



Lot 48

LOT 49 GUILFORD SATIN U079 (P)

Born: 26/5/2023

Eye Pigment: 100/100

Reg: AJDU079

SIRE: MAWARRA STAR ATTRACTION P033 (AI)(PP)

Tobruk Jedi (ET)(PP)

Wirruna Legs L108 (AI)(PP)

Wirruna Golden Vanity D88 (AI)(P)

DAM: GUILFORD SATIN Q58 (P)

Guilford Yardstick Y105 (P)

Guilford Satin F3 (P)

Guilford Satin A70 (P)

2024 FEBRUARY HEREFORD GROUP BREEDPLAN EBVs											
GL	Bwt	Milk	200wt	400wt	600wt	CWT	EMA	Rump	RBY%	IMF%	SS
+1.3	+6.4	+24	+44	+78	+109	+71	+4.4	-0.3	+1.5	+1.0	+3.2
56%	72%	49%	66%	62%	63%	52%	45%	53%	45%	50%	59%

Long thick Star Attraction heifer, excellent growth and weight for age in the top 5% for 400 & 600 Day wt, and milk. IEF DLF HYF MSUDF.

Purchaser.....\$.....

LOT 50 GUILFORD SATIN U144 (P)

Born: 22/7/2023

Eye Pigment: 60/100

Reg: AJDU144

Injemira Anzac H006 (PP)

Injemira Anzac H006 L055 (AI)(PP)

Injemira Cavalier F201 (P)

SIRE: CASCADE ROMEO R044 (PP)

Markowen Federer (AI)(PP)

Kidman Royal Faith L023 (P)

Kidman Royal Faith H241 (AI)(P)

Allendale Washington C77 (AI)(PP)

Guilford Getaway G99 (P)

Guilford Cora B11 (AI)(TW)(P)

DAM: GUILFORD SATIN P72 (P)

Guilford Hedonist H27 (PP)

Guilford Satin L14 (P)

Guilford Satin H62 (P)

2023 FEBRUARY HEREFORD GROUP BREEDPLAN EBVs											
GL	Bwt	Milk	200wt	400wt	600wt	CWT	EMA	Rump	RBY%	IMF%	SS
-1.7	+6.6	+18	+45	+77	+108	+69	+4.4	+0.4	+1.8	-0.1	+3.9
46%	70%	43%	61%	56%	58%	45%	36%	45%	37%	42%	53%

Very nice heifer by one of our new sires, is long thick and deep bodied. Has an excellent data set to match. Top 5% for 400 Day wt. IEF DLF HYF MSUDF.

Purchaser.....\$.....



Lot 49



Lot 50



The Davie family at Guilford use & recommend the

VETMEC

range of quality animal health products.

For effective and affordable ways to protect your stock, give us a call

1800 243 683



DIRECT FROM FACTORY TO FARMER

Australian owned & manufactured in Geelong

1800 243 683

www.chemvet.com.au

GUILFORD

POLL HEREFORD PRODUCTION SALE

BUYERS INSTRUCTION SLIP

Trading Name.....

Address.....

.....

Property Identification code.....

Contact Name.....

Telephone No.....

Email.....

Delivery Instructions

Insurance Details.....

Agent.....

LOTS PURCHASED	PRICE
.....
.....
.....
.....
.....
.....
.....
.....
.....
.....
.....
.....
.....
.....
.....
.....
.....
.....
.....
.....
.....

Is Stud Transfer Required? Yes / No

Vendor payment terms wanted? Yes / No (please circle one)

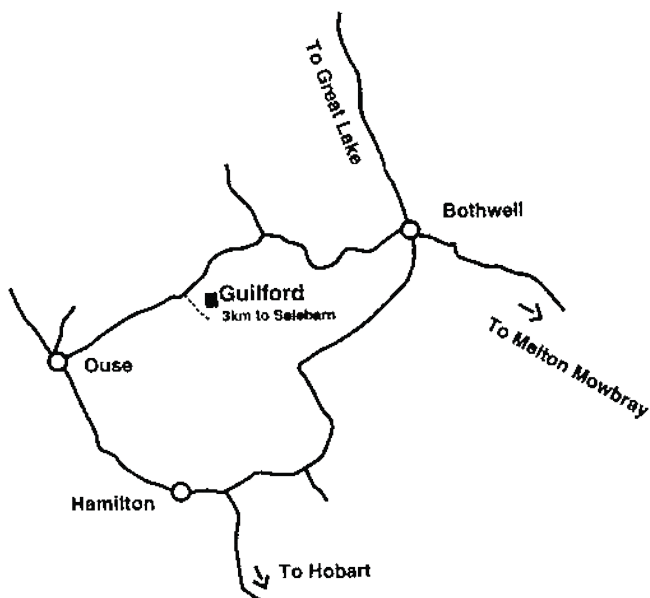
SIGNATURE.....DATE: 5/4/2024.

NO VERBAL INSTRUCTIONS WILL BE ACCEPTED

GUILFORD

23 kms from Bothwell

13 kms from Ouse



2024 SALE SUMMARY

Offered

Sold

Top Price

Average



LOT 2 GUILFORD TESSELLATION T020 (PP)



LOT 12 GUILFORD TANGO T012 (P)



LOT 21 GUILFORD TRANSLATOR T090 (PP)