

# Wool Weekly



Friday, 4 March 2022

## WOOL MARKET MOVEMENTS

- The EMI lost 14 cents to 1,407 c/kg clean as the Merino fleece sector trended lower. Merino skirtings were the strongest sector with most types & descriptions lifting. The national offering rose to 50,120 bales (up 3,410 bales) with a similar clearance rate to last week (12.2% passed in, up 0.3%). Sales will be on Wednesday and Thursday next week with 52,462 bales currently rostered for sale.
- Sydney's designated Australian superfine sale produced spirited bidding for stylish, fine (<17.5 µm) Merino fleece. Finer MPGs gained 4 to 21 cents on Tuesday, before demand softened on Wednesday. The 16.5 and 17 µm MPGs ended the week in positive territory (up 2 and 11 cents respectively), all other MPGs trended lower. Fine (<18.5 µm) Merino skirtings with low (< 3%) VM gained up to 20 cents on Tuesday before the sector eased on Wednesday. Finer (< 26.5 µm) crossbreds eased this week, down 10 cents, broader types were largely unchanged. Broader (> 19.0 µm) oddments with higher (> 3%) VM were cheaper. The Northern Regional Indicator lost 10 cents to 1,503 c/kg clean as the Northern Merino Carding Indicator dropped 23 cents to 979 c/kg clean. The Sydney pass in rate was 12% with 158 bales passed in.
- This week's three-day Melbourne sale saw prices move lower across almost all Merino fleece MPGs - the 19.5 µm MPG managed a 1 cent weekly gain. Well measured, best style, fine (< 18.5 µm) types were in short supply which contributed to the softer market, which became irregular with increasing pass in rates as the week progressed. Merino skirtings tended to maintain last week's level, although lower yielding lots with higher VM were cheaper. The crossbred and oddments sectors were relatively stable this week with minimal price movements, although the latter did lose some ground on Thursday (down 8 cents). The Southern Regional Indicator dropped 16 cents to 1,344 c/kg clean with the Southern Merino Carding Indicator down 14 cents to 982 c/kg clean. The Melbourne pass in rate was 11.0% with 950 bales withdrawn.
- Fremantle's Merino fleece sector lost ground this week. Broader (> 18.5 µm) MPGs dropped up to 32 cents while a limited supply of finer lots pushed the 18.0 µm MPG up 14 cents. A limited supply of Merino skirtings ended the week firm. Locks gained ground on Tuesday (up 10 to 20 cents) and maintained that level on Wednesday. The Western Regional Indicator closed at 1,444 c/kg clean, down 15 cents as the Western Merino Carding Indicator rose 5 cents to 942 c/kg clean. The Fremantle pass in rate was 15.3% with 334 bales withdrawn.

## AWEX WEEKLY WOOL PRICES

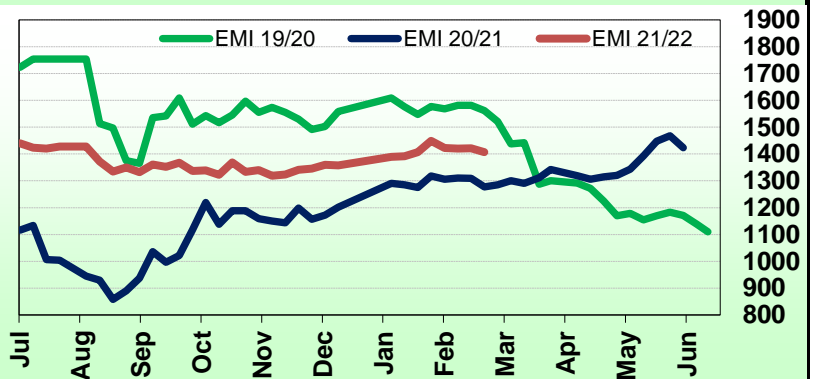
Regional Indicator	North	Wkly Chg	South	Wkly Chg	West	Wkly Chg
c/kg clean	1503	-10	1344	-16	1444	-15

MICRON PRICE GUIDES						
16.5	2822	+2	2856n	-	-	-
17	2649	+11	2651n	-50	-	-
17.5	2397	-7	2424	-33	-	-
18	2138	-17	2175	-10	2134	+14
18.5	1909	-6	1924	-9	1916	-18
19	1701	-8	1689	-19	1673	-25
19.5	1533	-8	1555	+1	1524	-20
20	1416	-6	1431	-3	1392	-19
21	1324	-25	1324	-28	1306	-32
22	-	-	1304n	-9	-	-
23	-	-	-	-	-	-
24	-	-	-	-	-	-
25	-	-	895n	-	-	-
26	718	-10	722	-12	-	-
28	418	+1	415	-5	-	-
30	-	-	352	-1	-	-
32	-	-	277n	-	-	-
MC	979	-23	982	-14	942	+5

## AWEX EMI 2019/20 & 2020/21 Seasons vs Current

Currently: 1407 c/kg clean



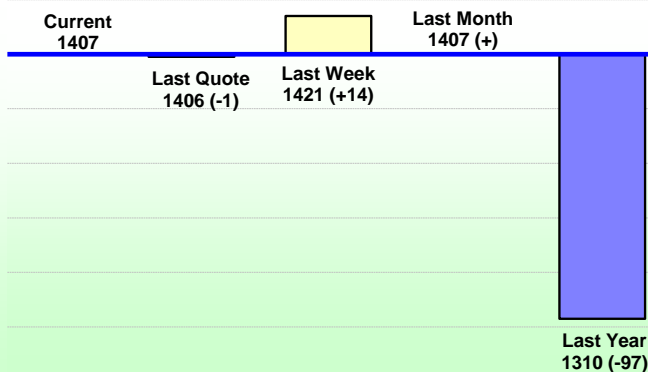
## UPCOMING AUCTION VOLUMES

	9/03/2022	16/03/2022	23/03/2022
Northern	S36	S37	S38
Sydney	14,109	11,448	12,580
Southern	M36	M37	M38
Melbourne	25,842	23,657	20,730
Western	F36	F37	F38
Fremantle	12,511	9,150	8,824
<b>Total</b>	<b>52,462</b>	<b>44,255</b>	<b>42,134</b>

## THIS WEEK'S SALES STATISTICS

Centre	Bales Originally	Bales Offered	Bales Sold	Pass in Rate
Northern	10,900	15,019	13,216	12.0%
Southern	22,087	25,150	22,382	11.0%
Western	9,200	9,951	8,430	15.3%
<b>TOTAL</b>	<b>42,187</b>	<b>50,120</b>	<b>44,028</b>	<b>12.2%</b>

### AWEX Weekly Eastern Market Indicator Quote Comparisons



### AUD vs USD from 06-Jul-04 to 03-Mar-22



Micron	EMI	16.5	17	17.5	18	18.5	19	19.5	20	21	22	23	25	28	AUD
<b>Current MPG's</b>	1407	2856	2651	2424	2175	1924	1689	1555	1431	1324	1304	-	895	415	0.729
<b>10 year Average</b>	1351	1947	1864	1798	1724	1651	1583	1528	1480	1444	1413	1371	1223	1086	0.796
<b>This time last year</b>	1310	2278	2103	1985	1833	1701	1611	1499	1405	1309	-	-	-	568	0.778
<b>10 year High</b>	2116	3187	3007	2831	2683	2569	2462	2414	2391	2371	2350	2308	2153	1828	1.058
<b>10 year Low</b>	858	1267	1216	1177	1140	1060	997	947	905	884	863	953	941	811	0.557
<b>% Reported above current</b>	35%	7%	8%	13%	19%	26%	36%	35%	41%	49%	50%	0%	0%	80%	69%
<b>Diff b/w High &amp; Current</b>	709	-	356	407	508	645	773	859	960	1047	1046	-	1258	1413	0.329
<b>Diff b/w Ave &amp; Current</b>	56	-	787	626	451	273	106	27	-49	-120	-109	-	-328	-671	-0.067

#### Percentile Bands

<b>95%</b>	1947	2964	2746	2546	2424	2344	2292	2269	2251	2233	2218	2167	1830	1524	1.050
<b>90%</b>	1815	2663	2535	2442	2331	2215	2124	2053	2002	1967	1950	1801	1383	1278	1.036
<b>80%</b>	1531	2536	2406	2264	2129	1961	1833	1753	1663	1589	1486	1428	1246	1181	0.996
<b>75%</b>	1452	2458	2326	2217	2071	1891	1764	1670	1581	1489	1431	1368	1165	1144	0.956
<b>60%</b>	1315	2050	1983	1931	1830	1702	1597	1484	1404	1358	1321	1296	1154	1047	0.816
<b>50%</b>	1269	1866	1715	1638	1573	1517	1480	1433	1358	1310	1271	1232	1123	964	0.774
<b>40%</b>	1205	1603	1570	1535	1501	1453	1398	1360	1315	1267	1231	1186	1093	926	0.760
<b>25%</b>	1095	1507	1420	1370	1340	1303	1274	1238	1209	1182	1155	1125	1052	896	0.728
<b>10%</b>	1017	1376	1299	1268	1229	1193	1167	1137	1118	1103	1083	1046	977	849	0.700

#### Indicative Basis Contract Prices

Date	MPG	17	17.5	18	18.5	19	19.5	20	21	22	23	28
Mar-2022		2060	1940	1860	1780	1680	1530	1320	1280	1220	1180	400
Apr-2022		2060	1940	1860	1780	1680	1530	1320	1280	1220	1180	400
May-2022		2060	1940	1860	1780	1680	1530	1320	1280	1220	1180	400
Jun-2022		2060	1940	1860	1780	1680	1530	1320	1280	1220	1180	400
Jul-2022		2060	1940	1860	1780	1680	1530	1320	1280	1220	1180	400
Aug-2022		2060	1940	1860	1780	1680	1530	1320	1280	1220	1180	400
Sep-2022		2060	1940	1860	1760	1680	1530	1320	1280	1220	1180	380
Oct-2022		2060	1940	1860	1760	1680	1530	1320	1280	1220	1180	380
Nov-2022		2060	1940	1860	1760	1680	1530	1320	1280	1210	1180	380
Dec-2022		2060	1940	1860	1760	1680	1530	1320	1280	1210	1180	380
Jan-2023		2060	1940	1860	1760	1680	1530	1320	1280	1210	1180	380
Feb-2023		2060	1940	1860	1760	1680	1530	1320	1280	1210	1180	380
Mar-2023		2060	1940	1860	1760	1680	1530	1320	1280	1210	1180	380
Apr-2023		2060	1940	1860	1760	1680	1530	1320	1280	1210	1180	380
May-2023		2350	1940	1860	1760	1680	1530	1320	1280	1210	1180	380

#### Mulesing Status P/D's

µm	Non Mulsed	Pain Relief
18	+32	+10
19	+26	+11
20	+19	+11
21	+19	+5
23	0	0
25	0	+4

All prices on this sheet are listed in c/kg clean. MPG's are average North/South AWEX quoted figures. Mulesing P/D's quoted by AWEX. Basis Contract prices are published purely as a guide.

Please use above figures as a guide to submit your GTC or Target orders. Call 1800 629 396.