

# Wool Weekly



Friday, 14 January 2022

## WOOL MARKET MOVEMENTS

- A stellar start to the new year, all MPGs in all centres ended the week in positive territory. The weekly offering increased to 43,739 bales (up 2,877 bales). High clearance rates were a feature, as the national pass in rate reduced to 7.3% (down 6.4%) from the pre-Christmas sales. The EMI climbed 31 cents to 1,389 c/kg clean on the back of solid demand for fine Merino fleece, low (<5%) VM Merino skirtings and a rising crossbred sector. Skirtings had a positive week with all Merino Carding Indicators gaining ground. Next week has 46,533 bales rostered for sale with Melbourne selling over 3 days.
- All Sydney Merino fleece MPGs recorded price rises on both sale days, producing weekly increases ranging from 20 (19 µm) to 36 (17.5 & 18.0 µm) cents. Merino skirtings gained 10 to 20 cents on Tuesday with the sector unchanged on Wednesday. The crossbred sector gained up to 30 cents for the week. The oddments sector also trended upwards with locks, crutchings and stains ending the week 15 to 35 cents dearer. The Northern Regional Indicator rose 27 cents to 1,465 c/kg clean and the Northern Merino Carding Indicator gained 29 cents to 917 c/clean. The Sydney pass in rate was 6.3% with 455 bales withdrawn.
- Buyers chased stylish, fine (< 18.0 µm), well measured Merino fleece lots in Melbourne on Tuesday. Non mulesed and other specialty lots also attracted strong interest. The strong market and high clearance rates continued into Wednesday and Thursday. Finer (<17.5 µm) MPGs gained upwards of 61 cents for the week with the 18 to 22 µm MPGs recording weekly gains of 37 to 58 cents. The Merino skirtings sector was flat on Tuesday but strengthened as the week progressed. Fine, stylish lots with low (<2 %) VM led the way gaining up to 40 cents. Crossbreds had a positive week and Merino locks with higher yields contributed to the weekly gains in the oddments sector. The Southern Regional Indicator jumped 33 cents to 1,338 c/kg clean and the Southern Regional Carding Indicator closed at 946 c/kg clean, up 15 cents. The Melbourne pass in rate was 7.1% with 756 bales withdrawn.
- Fremantle's Merino fleece sector had a solid week, led by the finer (<18.5 µm) end of the range which gained upwards of 50 cents. Fine (<19.0 µm) Merino skirtings were up to 20 cents dearer on Tuesday, with stylish low VM lots lifting a further 20 cents on Wednesday. Locks lifted up to 50 cents, with stains and crutchings up 20 cents. The Western Regional Indicator climbed 31 cents to 1,439 c/kg clean with the Western Regional Carding Indicator up 34 cents to 908 c/kg clean. The Fremantle pass in rate was 9.0% with 387 bales withdrawn.

## AWEX WEEKLY WOOL PRICES

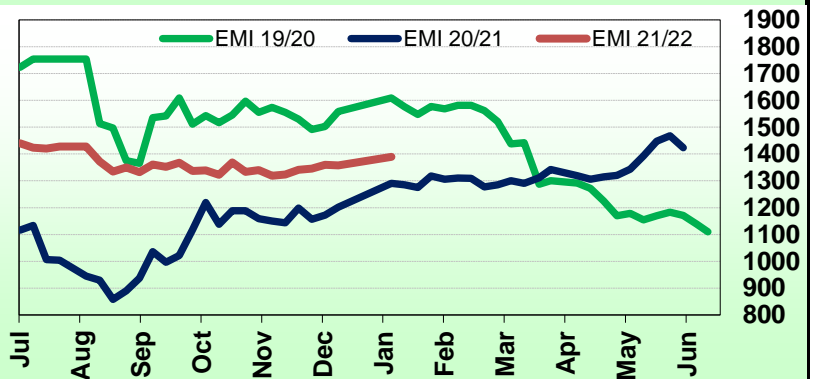
| Regional Indicator | North | Wkly Chg | South | Wkly Chg | West | Wkly Chg |
|--------------------|-------|----------|-------|----------|------|----------|
| c/kg clean         | 1465  | +27      | 1338  | +33      | 1439 | +31      |

| MICRON PRICE GUIDES |       |     |       |     |       |     |
|---------------------|-------|-----|-------|-----|-------|-----|
| 16.5                | 2638  | +31 | 2655n | +73 | -     | -   |
| 17                  | 2465  | +27 | 2495  | +61 | -     | -   |
| 17.5                | 2291  | +36 | 2345  | +74 | -     | -   |
| 18                  | 2080  | +36 | 2124  | +49 | 2046n | +50 |
| 18.5                | 1883  | +23 | 1901  | +45 | 1887n | +41 |
| 19                  | 1700  | +20 | 1719  | +37 | 1676  | +38 |
| 19.5                | 1546  | +27 | 1551  | +48 | 1527  | +40 |
| 20                  | 1408  | +28 | 1441  | +58 | 1391  | +37 |
| 21                  | 1340n | +21 | 1363  | +52 | 1334n | +29 |
| 22                  | -     | -   | 1336n | +29 | -     | -   |
| 23                  | -     | -   | -     | -   | -     | -   |
| 24                  | -     | -   | -     | -   | -     | -   |
| 25                  | -     | -   | -     | -   | -     | -   |
| 26                  | 759   | +31 | 750n  | +10 | -     | -   |
| 28                  | 420   | +20 | 432   | +17 | -     | -   |
| 30                  | 377   | -   | 380   | +12 | -     | -   |
| 32                  | -     | -   | 260n  | -   | -     | -   |
| MC                  | 917   | +29 | 946n  | +15 | 908   | +34 |

## AWEX EMI 2019/20 & 2020/21 Seasons vs Current

Currently: 1389 c/kg clean



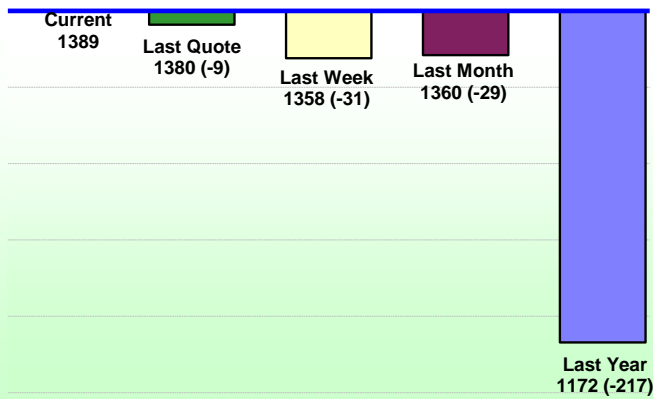
## UPCOMING AUCTION VOLUMES

|              | 19/01/2022    | 26/01/2022    | 2/02/2022     |
|--------------|---------------|---------------|---------------|
| Northern     | S29           | S30           | S31           |
| Sydney       | 10,215        | 11,280        | 9,700         |
| Southern     | M29           | M30           | M31           |
| Melbourne    | 27,311        | 20,530        | 22,357        |
| Western      | F29           | F30           | F31           |
| Fremantle    | 9,007         | 8,107         | 8,342         |
| <b>Total</b> | <b>46,533</b> | <b>39,917</b> | <b>40,399</b> |

## THIS WEEK'S SALES STATISTICS

| Centre       | Bales Originally | Bales Offered | Bales Sold    | Pass in Rate |
|--------------|------------------|---------------|---------------|--------------|
| Northern     | 13,584           | 12,543        | 11,749        | 6.3%         |
| Southern     | 24,248           | 22,180        | 20,600        | 7.1%         |
| Western      | 10,515           | 9,016         | 8,209         | 9.0%         |
| <b>TOTAL</b> | <b>48,347</b>    | <b>43,739</b> | <b>40,558</b> | <b>7.3%</b>  |

### AWEX Weekly Eastern Market Indicator Quote Comparisons



### AUD vs USD from 06-Jul-04 to 13-Jan-22



| Micron                             | EMI  | 16.5 | 17   | 17.5 | 18   | 18.5 | 19   | 19.5 | 20   | 21   | 22   | 23   | 25   | 28   | AUD    |
|------------------------------------|------|------|------|------|------|------|------|------|------|------|------|------|------|------|--------|
| <b>Current MPG's</b>               | 1389 | 2655 | 2495 | 2345 | 2124 | 1901 | 1719 | 1551 | 1441 | 1363 | 1336 | -    | -    | 432  | 0.728  |
| <b>10 year Average</b>             | 1349 | 1931 | 1849 | 1786 | 1716 | 1646 | 1581 | 1528 | 1481 | 1446 | 1415 | 1371 | 1223 | 1088 | 0.798  |
| <b>This time last year</b>         | 1172 | 2068 | 1910 | 1778 | 1627 | 1494 | 1390 | 1326 | 1245 | 1162 | -    | -    | -    | 471  | 0.774  |
| <b>10 year High</b>                | 2116 | 3187 | 3007 | 2831 | 2683 | 2569 | 2462 | 2414 | 2391 | 2371 | 2350 | 2308 | 2153 | 1828 | 1.058  |
| <b>10 year Low</b>                 | 858  | 1267 | 1216 | 1177 | 1140 | 1060 | 997  | 947  | 905  | 884  | 863  | 953  | 941  | 811  | 0.557  |
| <b>% Reported above current</b>    | 34%  | 11%  | 14%  | 17%  | 22%  | 27%  | 34%  | 36%  | 39%  | 45%  | 44%  | 0%   | 0%   | 0%   | 70%    |
| <b>Diff b/w High &amp; Current</b> | 727  | 532  | 512  | 486  | 559  | 668  | 743  | 863  | 950  | 1008 | 1014 | -    | -    | 1396 | 0.330  |
| <b>Diff b/w Ave &amp; Current</b>  | 40   | 724  | 646  | 559  | 408  | 255  | 138  | 23   | -40  | -83  | -79  | -    | -    | -656 | -0.070 |

#### Percentile Bands

|            |      |      |      |      |      |      |      |      |      |      |      |      |      |      |       |
|------------|------|------|------|------|------|------|------|------|------|------|------|------|------|------|-------|
| <b>95%</b> | 1948 | 2965 | 2747 | 2549 | 2425 | 2346 | 2293 | 2270 | 2252 | 2235 | 2219 | 2167 | 1830 | 1526 | 1.050 |
| <b>90%</b> | 1817 | 2635 | 2519 | 2442 | 2333 | 2215 | 2127 | 2055 | 2012 | 1971 | 1952 | 1801 | 1383 | 1279 | 1.036 |
| <b>80%</b> | 1534 | 2527 | 2385 | 2251 | 2118 | 1967 | 1838 | 1756 | 1671 | 1606 | 1495 | 1428 | 1245 | 1181 | 0.998 |
| <b>75%</b> | 1471 | 2418 | 2304 | 2199 | 2057 | 1881 | 1769 | 1676 | 1588 | 1494 | 1434 | 1368 | 1162 | 1146 | 0.960 |
| <b>60%</b> | 1311 | 2032 | 1970 | 1916 | 1814 | 1691 | 1589 | 1479 | 1400 | 1358 | 1320 | 1296 | 1154 | 1051 | 0.839 |
| <b>50%</b> | 1265 | 1857 | 1697 | 1624 | 1565 | 1508 | 1470 | 1424 | 1355 | 1306 | 1266 | 1232 | 1123 | 968  | 0.775 |
| <b>40%</b> | 1195 | 1596 | 1568 | 1531 | 1498 | 1450 | 1394 | 1359 | 1311 | 1264 | 1230 | 1186 | 1092 | 929  | 0.761 |
| <b>25%</b> | 1094 | 1506 | 1414 | 1369 | 1337 | 1301 | 1270 | 1236 | 1208 | 1180 | 1154 | 1125 | 1049 | 896  | 0.731 |
| <b>10%</b> | 1016 | 1376 | 1299 | 1268 | 1229 | 1191 | 1166 | 1137 | 1115 | 1102 | 1078 | 1046 | 968  | 849  | 0.700 |

#### Indicative Basis Contract Prices

| Date     | MPG | 17   | 17.5 | 18   | 18.5 | 19   | 19.5 | 20   | 21   | 22   | 23   | 28  |
|----------|-----|------|------|------|------|------|------|------|------|------|------|-----|
| Jan-2022 |     | 2050 | 1930 | 1850 | 1770 | 1670 | 1520 | 1360 | 1320 | 1260 | 1220 | 380 |
| Feb-2022 |     | 2050 | 1930 | 1850 | 1770 | 1670 | 1520 | 1360 | 1320 | 1260 | 1220 | 380 |
| Mar-2022 |     | 2050 | 1930 | 1850 | 1770 | 1670 | 1520 | 1260 | 1320 | 1260 | 1220 | 380 |
| Apr-2022 |     | 2050 | 1930 | 1850 | 1770 | 1670 | 1520 | 1260 | 1320 | 1260 | 1220 | 380 |
| May-2022 |     | 2050 | 1930 | 1850 | 1770 | 1670 | 1520 | 1260 | 1320 | 1260 | 1220 | 380 |
| Jun-2022 |     | 2340 | 2040 | 1960 | 1760 | 1670 | 1520 | 1260 | 1320 | 1260 | 1220 | 400 |
| Jul-2022 |     | 2050 | 1930 | 1850 | 1750 | 1670 | 1520 | 1260 | 1320 | 1260 | 1220 | 380 |
| Aug-2022 |     | 2050 | 1930 | 1850 | 1750 | 1670 | 1520 | 1260 | 1320 | 1260 | 1220 | 380 |
| Sep-2022 |     | 2050 | 1930 | 1850 | 1750 | 1670 | 1520 | 1260 | 1320 | 1250 | 1220 | 380 |
| Oct-2022 |     | 2050 | 1930 | 1850 | 1750 | 1670 | 1520 | 1260 | 1320 | 1250 | 1220 | 380 |
| Nov-2022 |     | 2050 | 1930 | 1850 | 1750 | 1670 | 1520 | 1260 | 1320 | 1250 | 1220 | 380 |
| Dec-2022 |     | 2050 | 1930 | 1850 | 1750 | 1670 | 1520 | 1260 | 1320 | 1250 | 1220 | 380 |
| Jan-2023 |     | 2050 | 1930 | 1850 | 1750 | 1670 | 1520 | 1260 | 1320 | 1250 | 1220 | 380 |
| Feb-2023 |     | 2050 | 1930 | 1850 | 1750 | 1670 | 1520 | 1260 | 1320 | 1250 | 1220 | 380 |
| Mar-2023 |     | 2050 | 1930 | 1850 | 1750 | 1670 | 1520 | 1260 | 1320 | 1250 | 1220 | 380 |

#### Mulesing Status P/D's

| µm | Non Mulsed | Pain Relief |
|----|------------|-------------|
| 18 | +32        | +10         |
| 19 | +26        | +11         |
| 20 | +19        | +11         |
| 21 | +19        | +5          |
| 23 | 0          | 0           |
| 25 | 0          | +4          |

All prices on this sheet are listed in c/kg clean. MPG's are average North/South AWEX quoted figures. Mulesing P/D's quoted by AWEX. Basis Contract prices are published purely as a guide.

Please use above figures as a guide to submit your GTC or Target orders. Call 1800 629 396.