

Ryegrass

DYNAGRO
SEED

Astound
Tetraploid

SCIENTIFIC NAME

Lolium multiflorum ssp. westerwoldicum

FEATURES

- Annual Tetraploid Ryegrass
- Selected for the potential for fast emergence and vigor assisting establishment when unreliable autumn breaks occur
- Potential to produce a power of feed in spring and ideal for silage or hay production
- Potential for exceptional late season growth for an annual ryegrass
- Densely tillered, broad leaf plant with potential for extra yield
- Relatively large seed size

MATURITY

- Mid maturity to provide feed in late winter and early spring
- Days to flowering relative to Nui (0) -2

AREA OF ADAPTION

- Medium to high rainfall zones
- Ideal for grazing, silage or hay

COMPARABLE VARIETIES INCLUDE:

- Abundant
- Burst
- Ascend
- Mach1
- Vortex

SOIL TYPE

Astound is suited to a wide range of soil types and will perform best in paddocks with good fertility. To maximise stand productivity, soil testing is advisable. Analyse soil and neutralise deficiencies with fertiliser and/or lime.

FERTILITY

Good base rates of phosphorus are necessary for maximum dry matter (DM) production, especially during the establishment phase. DM production is also directly related to nitrogen availability. Consult your agronomist for fertiliser application rates.

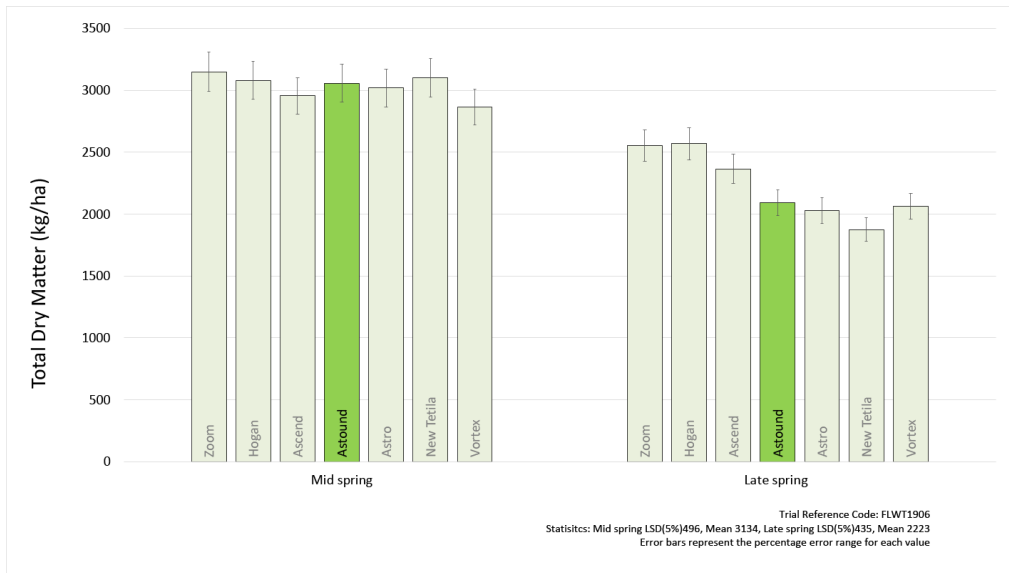
SOWING

Sow at 25-40 kg/ha alone or 10-25 kg/ha when a component of a pasture blend. Sow seed 12-15mm in a fine but firm seed bed. Sow into bared ground if direct drilling. Lightly harrow and roll to improve germination. Suitable for oversowing into an established stand. Pasture productivity is directly related to successful plant establishment.

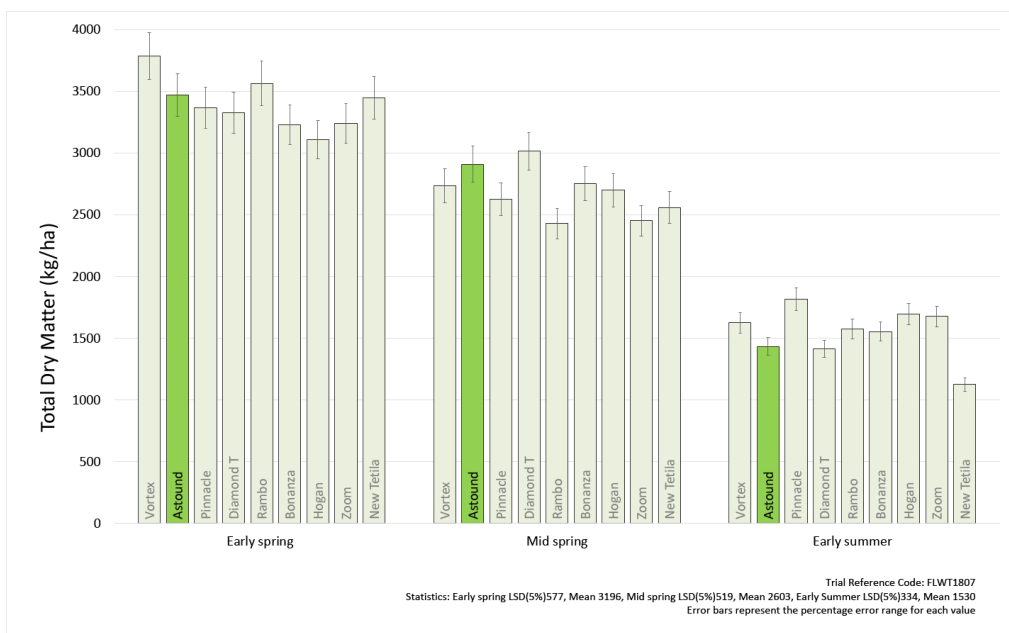


Chris Dunn, Nutrien Ag Solutions Elmore in Astound 2019

Ryegrass



Graph 1. Valley Seeds Trial, Seasonal Yield Comparison, Yarck, Victoria, 2019



Graph 2. Valley Seeds Trial, Seasonal Yield Comparison, Yambuk, Victoria, 2018

DYNAGRO
SEED

DISCLAIMER: The information provided in this fact sheet is intended as a guide only and is current as of October 2020. Although Nutrien Ag Solutions has taken all due care to provide accurate information in this fact sheet, there can be no guarantee that such information is accurate as of the date it is received or that it will continue to be accurate in the future. Information in this fact sheet should not be considered as advice as it does not take into account that the performance of grains may vary under different climatic conditions and other natural causes from season to season. No one should rely upon the information contained in this fact sheet without appropriate professional advice regarding relevant factors specific to your situation such as planting times and environmental conditions. To the maximum extent permitted by law, and except as prohibited under the Competition and Consumer Act 2010 (Cth), Nutrien Ag Solutions Limited and its related bodies corporate will not be liable for any loss or damage suffered by any person arising out of any reliance on any information contained in this fact sheet. This product is available from Nutrien Ag Solutions and is marketed under the Dyna-Gro Seed brand. For more information on Dyna-Gro Seed contact your local Nutrien Ag Solutions Branch. Dyna-Gro is a registered trademark of Nutrien Ag Solutions Limited. If you do not wish to receive promotional material or mailings from us please contact us on (03) 9209 2000 or via our website.