

# Wool Weekly



Thursday, 25 November 2021

## WOOL MARKET MOVEMENTS

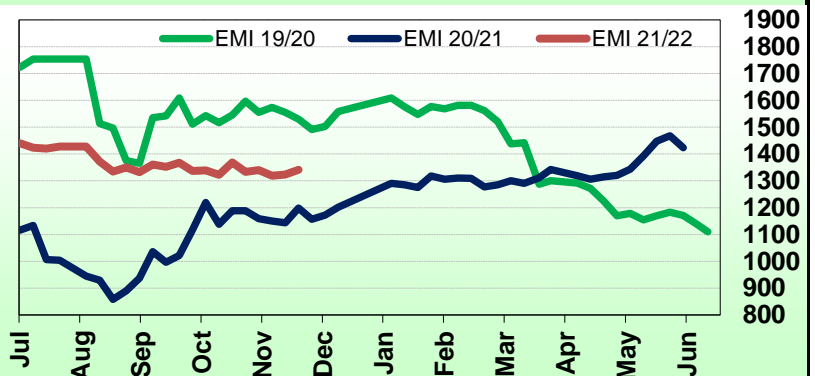
- Competition between an increased number of buyers for finer Merino fleece lots and a strong oddments sector pushed the EMI up 17 cents to 1,341 c/kg clean. The national offering contracted to 36,814 bales with 7.1% passed in (excl. NZ lots). The EMI is currently 16.6% higher and the number of bales offered is 24.8% greater compared to the same time last season. On a year-to-date basis, the 2021/22 offering has presented fewer lots with <1.0% VM, a larger percentage of best style wools with higher staple strength and fewer midbreaks. All three centres are selling next week with 41,499 bales currently on offer.
- After losing ground on Tuesday, Sydney's Merino fleece sector bounced back strongly on Wednesday. The 19.0 µm and finer MPGs gained 31 to 40 cents with broader MPGs rising 26 to 32 cents. Merino skirtings were unchanged on Tuesday, before gaining up to 20 cents as buyers chased well measured, low VM (<3%) lots. Minor price increases occurred in the crossbred sector. Oddments were unchanged on Tuesday, before Crutchings & Stains surged up to 20 cents on Wednesday. The Northern Regional Indicator rose 14 cents to 1,421 c/kg clean and the Northern Merino Carding Indicator jumped 12 cents to 874 c/kg clean. The Sydney pass in rate was 5.9% with 518 bales withdrawn.
- Melbourne's Merino fleece sector began the week slowly but gained momentum led by specialty fine (<17.5 µm) Non Mulesed lots which gained up to 40 cents on Tuesday and those with higher yields and low CVH on Wednesday (up to 50 cents dearer). Another positive week for Merino skirtings with strong price gains on Tuesday and increased momentum following early price falls on Wednesday. The crossbred sector maintained last week's level. Oddments had a strong day on Tuesday, led by fine (<17.5 µm) Merino locks which gained up to 40 cents, and maintained that level on Wednesday. The Southern Regional Indicator gained 20 cents to 1,288 c/kg clean. The Southern Merino Carding Indicator closed at 903 c/kg clean, up 8 cents. The Melbourne pass in rate was 7.9% with 1,097 bales withdrawn.
- Fremantle's Merino fleece sector dipped lower on Tuesday as all MPGs lost ground, down 9 to 15 cents, although stylish lots were keenly sought. The sector rebounded on Wednesday regaining the lost ground. Merino skirtings were unchanged on Tuesday, before rising up to 30 cents on Wednesday. Locks gained up to 35 cents and stains and crutchings up to 20 cents. The Western Regional Indicator gained 8 cents to 1,401 c/kg clean while the Western Merino Carding Indicator jumped 21 cents to 879 c/kg clean. The Fremantle pass in rate was 6.3% with 1,035 bales withdrawn.

## AWEX WEEKLY WOOL PRICES

Regional Indicator	North	Wkly Chg	South	Wkly Chg	West	Wkly Chg
c/kg clean	1421	+14	1288	+20	1401	+8
MICRON PRICE GUIDES						
16.5	2591	+37	2537n	+62	-	-
17	2399	+29	2368n	+38	-	-
17.5	2215	+41	2214	+44	-	-
18	2003	+23	2000	+26	1974n	-1
18.5	1818	+13	1823	+44	1832n	+1
19	1662	+29	1657	+33	1632	+4
19.5	1500	+11	1501	+32	1482	+4
20	1366	+1	1366	+22	1339	+1
21	1308n	+10	1310	+14	1290n	+5
22	-	-	1298	+23	-	-
23	-	-	-	-	-	-
24	-	-	-	-	-	-
25	-	-	-	-	-	-
26	740n	-	-	-	-	-
28	408n	+1	408	-2	-	-
30	-	-	340n	0	-	-
32	-	-	-	-	-	-
MC	874n	+12	903n	+8	879n	+21

## AWEX EMI 2019/20 & 2020/21 Seasons vs Current

Currently: 1341 c/kg clean



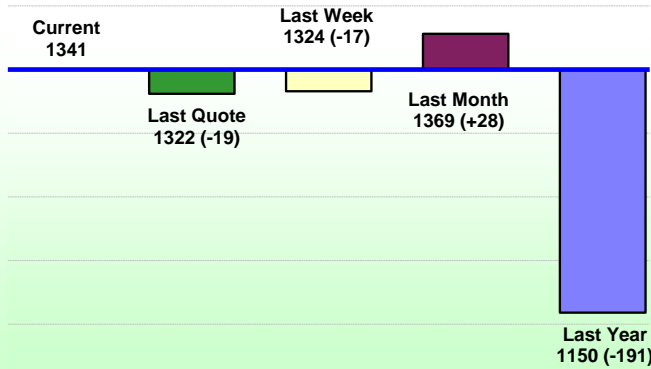
## UPCOMING AUCTION VOLUMES

	30/11/2021	7/12/2021	14/12/2021
Northern	S22	S23	S24
Sydney	9,685	10,960	11,930
Southern	M22	M23	M24
Melbourne	23,899	22,020	22,200
Western	F22	F23	F24
Fremantle	7,915	8,070	8,000
<b>Total</b>	<b>41,499</b>	<b>41,050</b>	<b>42,130</b>

## THIS WEEK'S SALES STATISTICS

Centre	Bales Originally	Bales Offered	Bales Sold	Pass in Rate
Northern	10,610	9,507	8,943	5.9%
Southern	22,495	20,478	18,859	7.9%
Western	7,730	6,829	6,401	6.3%
<b>TOTAL</b>	<b>40,835</b>	<b>36,814</b>	<b>34,203</b>	<b>7.1%</b>

### AWEX Weekly Eastern Market Indicator Quote Comparisons



### AUD vs USD from 06-Jul-04 to 24-Nov-21



Micron	EMI	16.5	17	17.5	18	18.5	19	19.5	20	21	22	23	25	28	AUD
<b>Current MPG's</b>	1341	2564	2384	2215	2002	1821	1660	1501	1366	1309	1298	-	-	408	0.721
<b>10 year Average</b>	1349	1925	1844	1782	1712	1644	1580	1528	1482	1447	1416	1371	1223	1088	0.799
<b>This time last year</b>	1150	1946	1834	1716	1568	1461	1378	1307	1233	1173	-	-	-	489	0.736
<b>10 year High</b>	2116	3187	3007	2831	2683	2569	2462	2414	2391	2371	2350	2308	2153	1828	1.058
<b>10 year Low</b>	858	1267	1216	1177	1140	1060	997	947	905	884	863	953	941	811	0.557
<b>% Reported above current</b>	38%	15%	20%	25%	29%	35%	37%	40%	49%	51%	49%	0%	0%	0%	76%
<b>Diff b/w High &amp; Current</b>	775	623	623	617	681	748	803	913	1025	1062	1052	-	-	1420	0.337
<b>Diff b/w Ave &amp; Current</b>	-8	639	540	433	289	176	80	-27	-116	-138	-118	-	-	-680	-0.077

#### Percentile Bands

<b>95%</b>	1949	2965	2747	2551	2425	2346	2293	2270	2253	2236	2219	2167	1830	1527	1.050
<b>90%</b>	1818	2635	2520	2444	2334	2218	2129	2056	2014	1976	1958	1801	1383	1279	1.037
<b>80%</b>	1535	2520	2380	2251	2119	1972	1839	1759	1674	1616	1498	1428	1245	1181	0.998
<b>75%</b>	1478	2399	2294	2192	2055	1881	1769	1678	1593	1498	1435	1368	1162	1146	0.964
<b>60%</b>	1309	2022	1940	1896	1802	1683	1582	1477	1400	1360	1321	1296	1154	1051	0.855
<b>50%</b>	1263	1853	1693	1618	1563	1502	1467	1420	1352	1305	1265	1232	1123	968	0.775
<b>40%</b>	1194	1593	1563	1528	1494	1447	1392	1357	1309	1262	1228	1186	1092	929	0.762
<b>25%</b>	1092	1504	1412	1368	1335	1300	1267	1236	1207	1180	1154	1125	1049	896	0.732
<b>10%</b>	1015	1375	1298	1268	1227	1191	1166	1136	1113	1100	1078	1046	968	849	0.700

#### Indicative Basis Contract Prices

Date	MPG	17	17.5	18	18.5	19	19.5	20	21	22	23	28
Nov-2021		2000	1880	1800	1720	1620	1495	1270	1230	1170	1130	380
Dec-2021		2000	1880	1800	1720	1620	1495	1280	1240	1180	1140	380
Jan-2022		2000	1880	1800	1720	1620	1495	1260	1230	1170	1130	380
Feb-2022		2000	1880	1800	1720	1620	1495	1260	1320	1260	1220	380
Mar-2022		2000	1880	1800	1720	1620	1495	1260	1320	1260	1220	380
Apr-2022		2000	1880	1800	1720	1620	1495	1260	1270	1210	1170	380
May-2022		2000	1880	1800	1700	1620	1495	1260	1320	1260	1220	380
Jun-2022		2000	1880	1800	1700	1620	1495	1260	1270	1210	1170	380
Jul-2022		2000	1880	1800	1700	1620	1495	1260	1270	1200	1170	380
Aug-2022		2000	1880	1800	1700	1620	1495	1260	1270	1200	1170	380
Sep-2022		2000	1880	1800	1700	1620	1495	1260	1270	1200	1170	380
Oct-2022		2000	1880	1800	1700	1620	1495	1260	1270	1200	1170	380
Nov-2022		2000	1880	1800	1700	1620	1495	1260	1270	1200	1170	380
Dec-2022		2000	1880	1800	1700	1620	1495	1260	1270	1200	1170	380
Jan-2023		2000	1880	1800	1700	1620	1495	1260	1270	1200	1170	380

#### Mulesing Status P/D's

µm	Non Mulsed	Pain Relief
18	+32	+10
19	+26	+11
20	+19	+11
21	+19	+5
23	0	0
25	0	+4

All prices on this sheet are listed in c/kg clean. MPG's are average North/South AWEX quoted figures. Mulesing P/D's quoted by AWEX. Basis Contract prices are published purely as a guide.

Please use above figures as a guide to submit your GTC or Target orders. Call 1800 629 396.