

# 17th Annual On-Property Sale



233 Lots

BRUCELLOSIS  
FREE

**Thursday November 11th 2021**

Sale 1.30 pm | Inspection from 11.00am



SALE INTERFACED  
WITH AUCTIONS PLUS

**SOUTHDOWN | WHITE SUFFOLK | POLL DORSET**

F.H Badcock & Son  
174 Hagley Station Lane, Hagley, TAS

# FAIRBANK

PRIME LAMB SIREs

- SINCE 1903 -



**Agents:**



(4% rebate to outside agents)

Written introduction 24 hours  
prior to sale applies.  
Settlement within 7 days.

**Nutrien Contacts:**

Jock Gibson - 0418 133 595  
Drew Skinner - 0418 122 422  
Warren Johnston - 0419 326 348  
David Bennett - 0439 632 374  
Cooper Lamprey - 0429 304 110

**Fairbank Contacts:**

Chris Badcock - 0438 775 285  
Frank Badcock - 0419 922 227

# Welcome to our 17th Annual On-Property Ram Sale

Prime lamb sires have been bred at Fairbank since the property was purchased by our family in 1903 and continue to be the major enterprise on the property. We aim to breed structurally superior rams that contain balanced ASBVs with Lambplan being utilised since its inception.

Due to the unpredictability of covid we have again decided to interface the sale with Auctions plus. Attendance is still encouraged on the day however anyone that cannot attend on the day can arrange a viewing prior and still participate in the sale.

This years sale is our largest offering of terminal genetics and will again feature not only our Poll Dorset, White Suffolk and Southdown rams but also our terminal composites (Southdown x Dorset and Charollais x Southdown/Dorset).

- All rams are vaccinated with 6 in 1. Ensure annual boosters are administered
- Drenched with Startect - October 2021
- Fairbank is ovine brucellosis accredited free
- OJD MN1V Status and are a 2nd generation approved vaccinated flock being vaccinated against OJD since 2003
- Southdown Stud breeders note that Lots 1-24 have been tested for Gaucher disease and are non carriers

**All ram LOTS are offered as flock rams, however should a transfer be required a minimum price of \$2500 will apply and nominated at the fall of the hammer.**

We would be happy to personally deliver within mainland Tasmania any rams not taken on the day. We thank you all for your interest in our sheep.

***Chris, Megan, Frank and Cynthia Badcock***

**Lambplan** has been used since its inception at Fairbank and whilst some selection criteria is placed on Lambplan ASBV's it is well known that we will not compromise structure or breed type to gain additional estimated breeding values. Lambplan is a guide to assist you in making decisions based on the genetic merit of each animal but should not replace visual selection. Balanced ASBV's are important for consistency of progeny but most importantly rams should be both fertile and structurally correct.

**Bwt – Birth Weight.** Rams with lower ASBV's for birth weight (BWT) produce lambs with lower birth weight. Both low (lamb survival) and high (lambing difficulties) should be avoided.

**Wwt – Weaning Weight.** Rams with a more positive ASBV for weaning weight (WWT) will, on average, produce lambs that grow quicker to weaning.

**Pwwt – Post weaning weight.** Rams with more positive ASBVs for post weaning weight (PWT) produce lambs that grow quicker and reach target weights in a shorter time.

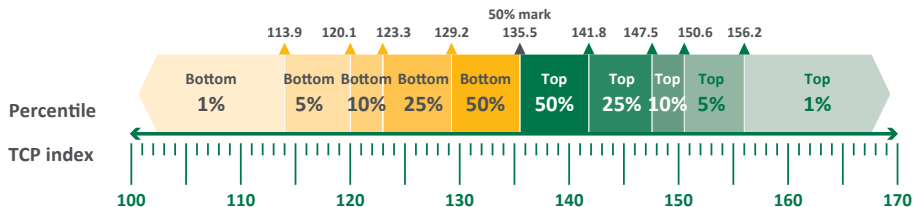
**Pemd – Post eye muscle depth.** Rams with a more positive ASBV for post weaning eye muscle depth produce lambs that have more muscle, independent of weight, and a higher lean meat yield.

**Pfat – Post fat.** Rams with a more negative ASBV for post weaning fat (PFAT) will produce lambs that are leaner at the same weight.

**TCP** The TCP Index has been created to assist producers to achieve both gains in their major production traits, such as post-weaning weight and muscling, as well as ensuring consumer satisfaction from lamb is maintained through focusing on key eating quality traits such as shear force (tenderness) and intramuscular fat (marbling).

**The TCP Index, unlike Carcase Plus, is on a scale that is aligned with other Sheep Genetics' indexes and is represented in economic terms with a unity index reflecting an additional dollar per ewe joined per year. To assist in comparing rams, Sheep Genetics recommends using a percentile band table as reference. The figure below, which is based on the percentile band table, highlights the TCP Index value for significant percentiles for the 2019 drop animals.**

TCP has been developed by using extensive research using mainly Poll Dorset and White Suffolk genetics. Therefore we believe this new index is not the most appropriate index for the Southdown and should not be used to compare between breeds. We are actively working with Sheep Genetics on a solution to find the most appropriate Southdown index.



# SOUTHDOWN EWES



# SOUTHDOWN RAMS



Southdowns have been a successful enterprise at Fairbank since 1922 spanning four generations, with both ram and ewe sales to all states during this time. This year's offering consists of progeny from our elite home bred sires that have been retained as they were the top sires of each drop.

This years Southdown offering include progeny of:

- **Fairbank 17/831** - Unshown, but retained for his high muscle ASBV and unique all Australian pedigree. He is a moderate, well muscled ram. Sire of last years Australian auction record \$11,000 ram. 5 rams and 2 ewes on offer.
- **Fairbank 17/821** - 2nd Geelong. An extremely long, open faced and good shouldered ram by an outcross sire, Clear Hills 13/341. 13 rams and 2 ewes on offer.
- **Fairbank 17/881** - 1st Bendigo, 2nd Geelong. A very correct ram with exceptional top line and tail setting. By Fairbank 15/629 (Reserve Ch. Bendigo, sold \$5,000 2016 on-property sale). 11 rams and 5 ewes on offer.
- **Yentrac 18/821** - Champion Bendigo 2019. Well-muscled, balanced and correct ram. 13 rams and 1 ewe on offer.
- **Nedelle Downs 17/37** - Sound ram used as a Lambplan link sire. Progeny display good growth. 10 rams and 2 ewes on offer.



## FAIRBANK - SOUTHDOWN

7

- **Fernhill 15/16** - Supreme sheep Geelong 2019. Very correct and well muscled ram. Sire of our keeper ram. 10 rams on offer.
- **Fairbank 19/797** - Used as ram lamb to pick up AI ewes. He was an outstanding lamb out of a very good ewe. 3 rams 1 ewe on offer.
- **Fairbank 18/827** - Keeper ram by AI sire Kirkdale 206. 3 rams on offer.
- **Fairbank 18/881** - Keeper ram who also sired this years Fairbank keeper ram. 2 rams 1 ewe on offer.

LOT	TAG	SIRE	BT	Bwt	Wwt	Pwwt	Pfat	Pemd	LEQ	TCP	\$	Purchaser
1	200914	ND170037	Tw	0.09	7.2	12.0	0.4	0.9	111.6	112.5		
2	201118	F170821	S	0.03	6.8	11.5	1.1	1.7	110.9	111.9		
<b>Fairbank Average</b>				0.25	7.0	11.1	0.1	0.5	107.3	109.6		
<b>Southdown Average</b>				0.22	6.2	9.6	0.0	0.5	106.9	108.6		

## 14 FAIRBANK SOUTHDOWN EWES

8

LOT	TAG	SIRE	BT	Bwt	Wwt	Pwwt	Pfat	Pemd	LEQ	TCP	\$	Purchaser
3	200924	F170821	Tw	0.15	6.1	10.2	0.2	0.8	107.4	110.1		
4	201116	F170881	Tw	0.35	8.0	11.9	0.1	0.5	104.1	108.5		
5	201083	F170881	Tw	0.27	6.0	9.6	0.1	0.6	102.4	106.1		
6	201189	F170881	Tw	0.21	5.6	8.9	0.1	0.5	99.3	103.0		
7	201215	F170831	Tr	0.24	5.3	9.3	0.4	1.6	107.8	112.0		
8	201142	F180881	Tw	0.12	6.2	9.9	-0.1	0.5	100.3	104.3		
<b>Fairbank Average</b>				0.25	7.0	11.1	0.1	0.5	107.3	109.6		
<b>Southdown Average</b>				0.22	6.2	9.6	0.0	0.5	106.9	108.6		

F - Fairbank

ND - Nedelle Downs

Y - Yentrac


 Top 10% Top 20% Top 30%

# 14 FAIRBANK SOUTHDOWN EWES

LOT	TAG	SIRE	BT	Bwt	Wwt	Pwwt	Pfat	Pemd	LEQ	TCP	\$	Purchaser
9	201198	F170881	Tw	0.15	5.7	9.1	0.6	0.7	100.7	104.1		
10	200897	F170831	Tw	0.01	3.4	5.8	0.6	1.4	98.8	101.3		
11	201171	F190797	Tw	0.03	5.0	8.8	0.5	1.1	111.3	110.0		
12	201024	ND170037	Tw	0.20	7.1	11.3	-0.1	0.2	109.6	109.9		
13	200962	Y180821	Tw	0.29	5.49	8.64	0.2	0.66	105.6	106.96		
14	201029	F170881	Tw	0.24	5.74	9.11	0.3	0.71	102.32	105.35		
<b>Fairbank Average</b>				0.25	7.0	11.1	0.1	0.5	107.3	109.6		
<b>Southdown Average</b>				0.22	6.2	9.6	0.0	0.5	106.9	108.6		

F - Fairbank

ND - Nedelle Downs

Y - Yentrac



Top 10%



Top 20%



Top 30%

## 70 FAIRBANK SOUTHDOWN RAMS

10

LOT	TAG	SIRE	BT	Bwt	Wwt	Pwwt	Pfat	Pemd	LEQ	TCP	\$	Purchaser
15	201209	F180827	S	0.44	7.9	12.7	-0.1	0.4	115.9	116.3		
16	201059	ND170037	S	0.36	9.1	14.7	-0.5	0.5	108.7	116.9		
17	200911	Y180821	Tw	0.34	7.7	12.1	0.8	0.9	112.6	111.9		
18	200964	Y180821	Tw	0.43	7.4	11.5	0.1	0.7	113.7	116.4		
19	200981	Y180821	Tw	0.41	8.0	12.1	-0.3	0.1	109.3	111.5		
20	200969	ND170037	Tr	0.34	9.9	15.3	-0.9	-0.1	111.5	117.8		
<b>Fairbank Average</b>				0.25	7.0	11.1	0.1	0.5	107.3	109.6		
<b>Southdown Average</b>				0.22	6.2	9.6	0.0	0.5	106.9	108.6		

F - Fairbank

ND - Nedelle Downs

Y - Yentrac

FH - Fernhill



Top 10%



Top 20%



Top 30%

## 70 FAIRBANK SOUTHDOWN RAMS

11

LOT	TAG	SIRE	BT	Bwt	Wwt	Pwwt	Pfat	Pemd	LEQ	TCP	\$	Purchaser
21	200944	Y180821	Tw	0.49	8.5	13.6	0.2	0.6	114.4	117.3		
22	201150	F170821	Tw	0.23	7.4	12.2	0.0	1.0	111.2	116.0		
23	201024	ND170037	Tw	0.20	7.1	11.3	-0.1	0.2	109.6	109.9		
24	201028	F170881	Tw	0.25	6.3	9.9	0.1	0.8	106.5	109.7		
25	200998	F170821	Tw	0.17	8.6	13.4	-0.2	0.7	109.7	114.7		
26	201168	F190797	Tw	0.17	6.9	10.8	0.0	0.9	111.4	113.9		
<b>Fairbank Average</b>				0.25	7.0	11.1	0.1	0.5	107.3	109.6		
<b>Southdown Average</b>				0.22	6.2	9.6	0.0	0.5	106.9	108.6		

F - Fairbank

ND - Nedelle Downs

Y - Yentrac

FH - Fernhill



Top 10%



Top 20%



Top 30%

## 70 FAIRBANK SOUTHDOWN RAMS

12

LOT	TAG	SIRE	BT	Bwt	Wwt	Pwwt	Pfat	Pemd	LEQ	TCP	\$	Purchaser
27	200985	FH160015	Tw	0.23	7.5	11.4	0.2	0.8	109.1	112.4		
28	200928	F170821	Tw	0.21	8.2	13.0	-0.2	0.3	107.1	111.2		
29	201072	ND170037	S	0.39	8.0	12.3	-0.8	-0.4	105.9	109.8		
30	200942	ND170037	S	0.27	8.2	12.8	0.6	0.4	111.5	109.5		
31	201127	F170821	Tw	0.12	6.9	11.1	-0.3	0.2	103.2	107.8		
32	201084	F170881	Tw	0.31	6.1	9.7	0.5	0.6	106.6	107.5		
<b>Fairbank Average</b>				0.25	7.0	11.1	0.1	0.5	107.3	109.6		
<b>Southdown Average</b>				0.22	6.2	9.6	0.0	0.5	106.9	108.6		

F - Fairbank

ND - Nedelle Downs

Y - Yentrac

FH - Fernhill



Top 10%



Top 20%



Top 30%

## 70 FAIRBANK SOUTHDOWN RAMS

13

LOT	TAG	SIRE	BT	Bwt	Wwt	Pwwt	Pfat	Pemd	LEQ	TCP	\$	Purchaser
<b>33</b>	201004	ND170037	Tw	0.16	7.1	11.3	0.2	0.2	105.8	106.9		
<b>34</b>	201038	F170821	Tw	-0.01	5.9	9.1	-0.3	0.8	102.5	106.8		
<b>35</b>	201126	F170881	S	0.32	7.6	11.3	-0.4	-0.2	104.2	106.4		
<b>36</b>	201111	F170881	Tw	0.26	6.4	9.7	0.3	0.7	103.2	106.3		
<b>37</b>	200925	F170881	Tw	0.31	5.9	9.2	0.5	0.5	98.7	101.9		
<b>38</b>	201075	F170881	Tw	0.35	7.3	11.1	0.7	0.0	100.2	101.4		
<b>Fairbank Average</b>				0.25	7.0	11.1	0.1	0.5	107.3	109.6		
<b>Southdown Average</b>				0.22	6.2	9.6	0.0	0.5	106.9	108.6		

F - Fairbank

ND - Nedelle Downs

Y - Yentrac

FH - Fernhill



Top 10%



Top 20%



Top 30%

## 70 FAIRBANK SOUTHDOWN RAMS

14

LOT	TAG	SIRE	BT	Bwt	Wwt	Pwwt	Pfat	Pemd	LEQ	TCP	\$	Purchaser
39	200976	ND170037	Tw	0.35	8.2	13.7	0.0	0.6	109.8	114.8		
40	201140	F170821	Tw	0.25	8.7	13.6	-0.1	0.5	109.9	113.2		
41	200975	FH160015	S	0.37	7.7	11.9	0.5	0.8	110.9	113.0		
42	201058	FH160015	Tw	0.44	8.3	13.1	-0.3	-0.3	109.7	111.7		
43	200984	FH160015	Tw	0.27	7.6	11.4	0.1	0.5	108.1	111.6		
44	201006	FH160015	Tw	0.37	7.6	11.2	-0.2	0.5	107.0	110.6		
<b>Fairbank Average</b>				0.25	7.0	11.1	0.1	0.5	107.3	109.6		
<b>Southdown Average</b>				0.22	6.2	9.6	0.0	0.5	106.9	108.6		

F - Fairbank

ND - Nedelle Downs

Y - Yentrac

FH - Fernhill



Top 10%



Top 20%



Top 30%



## 70 FAIRBANK SOUTHDOWN RAMS

15

LOT	TAG	SIRE	BT	Bwt	Wwt	Pwwt	Pfat	Pemd	LEQ	TCP	\$	Purchaser
45	201145	F170821	S	0.15	7.4	11.0	-0.1	0.8	105.1	109.2		
46	201208	F180827	S	0.42	7.3	11.5	-0.6	-0.2	105.4	108.4		
47	200929	F170821	Tw	0.15	7.2	11.5	-0.4	0.2	104.5	108.2		
48	201184	F170821	Tw	0.08	6.6	10.0	-0.3	0.8	103.2	107.6		
49	201088	F170881	Tw	0.15	5.2	8.8	0.4	1.0	102.7	106.0		
50	201081	F170881	Tw	0.20	5.9	9.0	0.1	-0.1	102.0	101.0		
<b>Fairbank Average</b>				0.25	7.0	11.1	0.1	0.5	107.3	109.6		
<b>Southdown Average</b>				0.22	6.2	9.6	0.0	0.5	106.9	108.6		

F - Fairbank

ND - Nedelle Downs

Y - Yentrac

FH - Fernhill


 Top 10% Top 20% Top 30%

## 70 FAIRBANK SOUTHDOWN RAMS

16

LOT	TAG	SIRE	BT	Bwt	Wwt	Pwwt	Pfat	Pemd	LEQ	TCP	\$	Purchaser
51	200968	Y180821	Tw	0.33	7.1	11.6	0.4	1.0	112.4	115.0		
52	201073	F170821	Tw	0.11	6.9	10.9	0.2	1.3	114.1	114.1		
53	201181	F170821	Tr	0.26	8.1	13.4	0.0	0.5	110.1	114.2		
54	201042	ND170037	Tw	0.31	7.8	12.5	-0.5	0.5	107.1	113.2		
55	201032	ND170037	Tw	0.21	8.3	12.9	-0.1	0.4	108.9	113.0		
56	200995	Y180821	Tw	0.44	7.4	11.2	0.1	0.3	112.7	112.5		
<b>Fairbank Average</b>				0.25	7.0	11.1	0.1	0.5	107.3	109.6		
<b>Southdown Average</b>				0.22	6.2	9.6	0.0	0.5	106.9	108.6		

F - Fairbank

ND - Nedelle Downs

Y - Yentrac

FH - Fernhill



Top 10%



Top 20%



Top 30%

## 70 FAIRBANK SOUTHDOWN RAMS

17

LOT	TAG	SIRE	BT	Bwt	Wwt	Pwwt	Pfat	Pemd	LEQ	TCP	\$	Purchaser
57	200916	Y180821	Tw	0.36	7.4	11.7	0.4	0.6	111.3	111.8		
58	201195	F180827	Tw	0.24	5.8	10.7	-0.1	0.2	108.1	109.3		
59	201010	ND170037	Tw	0.11	7.2	11.5	-0.2	0.6	104.8	109.0		
60	200994	Y180821	Tw	0.41	6.4	9.8	0.0	0.3	108.5	108.8		
61	200959	FH160015	S	0.10	5.4	9.5	0.4	0.4	105.6	105.6		
62	200926	F170881	Tw	0.25	5.7	9.1	0.9	1.2	101.2	104.2		
<b>Fairbank Average</b>				0.25	7.0	11.1	0.1	0.5	107.3	109.6		
<b>Southdown Average</b>				0.22	6.2	9.6	0.0	0.5	106.9	108.6		

F - Fairbank

ND - Nedelle Downs

Y - Yentrac

FH - Fernhill

Top 10%
 Top 20%
 Top 30%

## 70 FAIRBANK SOUTHDOWN RAMS

18

LOT	TAG	SIRE	BT	Bwt	Wwt	Pwwt	Pfat	Pemd	LEQ	TCP	\$	Purchaser
63	200949	FH160015	Tw	0.22	7.4	12.0	0.0	1.0	113.9	117.4		
64	201044	FH160015	Tw	0.38	8.4	13.5	-0.4	0.1	110.8	115.4		
65	201192	F190797	Tw	0.34	7.4	11.3	0.3	0.4	111.5	112.2		
66	200937	Y180821	Tw	0.45	7.1	10.9	-0.5	-0.1	108.6	111.3		
67	201057	FH160015	Tw	0.32	7.4	12.0	-0.2	0.0	108.3	110.9		
68	201147	F170821	Tw	0.06	6.7	11.2	0.0	0.6	106.2	109.3		
<b>Fairbank Average</b>				0.25	7.0	11.1	0.1	0.5	107.3	109.6		
<b>Southdown Average</b>				0.22	6.2	9.6	0.0	0.5	106.9	108.6		

F - Fairbank

ND - Nedelle Downs

Y - Yentrac

FH - Fernhill



Top 10%



Top 20%



Top 30%

## 70 FAIRBANK SOUTHDOWN RAMS

19

LOT	TAG	SIRE	BT	Bwt	Wwt	Pwwt	Pfat	Pemd	LEQ	TCP	\$	Purchaser
69	201023	FH160015	S	0.31	7.8	12.2	0.1	-0.5	105.6	107.4		
70	201082	F170881	Tw	0.30	7.2	11.0	0.1	0.4	103.1	107.0		
71	200909	Y180821	Tw	0.43	7.8	12.2	-0.5	-0.1	108.3	111.8		
72	200917	F170821	Tr	0.08	6.0	9.5	0.0	0.3	103.3	105.7		
73	201212	F170831	S	0.19	5.9	9.1	0.3	0.9	100.5	104.2		
74	201213	F170831	Tw	0.21	5.6	9.2	0.4	0.7	101.0	103.6		
<b>Fairbank Average</b>				0.25	7.0	11.1	0.1	0.5	107.3	109.6		
<b>Southdown Average</b>				0.22	6.2	9.6	0.0	0.5	106.9	108.6		

F - Fairbank

ND - Nedelle Downs

Y - Yentrac

FH - Fernhill



Top 10%



Top 20%



Top 30%

## 70 FAIRBANK SOUTHDOWN RAMS

20

LOT	TAG	SIRE	BT	Bwt	Wwt	Pwwt	Pfat	Pemd	LEQ	TCP	\$	Purchaser
75	200945	Y180821	Tw	0.14	6.6	10.9	0.7	1.2	113.6	114.4		
76	201191	F190797	Tw	0.27	6.5	10.3	0.3	0.6	110.8	112.7		
77	200931	Y180821	Tw	0.27	7.2	11.5	0.6	1.0	110.4	112.2		
78	200951	F180881	Tr	0.08	6.0	10.3	-0.1	0.6	105.2	108.3		
79	200896	F170831	S	0.01	4.7	7.5	1.2	2.0	104.7	106.3		
80	200899	F170831	Tw	0.11	4.4	7.6	0.0	1.0	102.2	105.9		
<b>Fairbank Average</b>				0.25	7.0	11.1	0.1	0.5	107.3	109.6		
<b>Southdown Average</b>				0.22	6.2	9.6	0.0	0.5	106.9	108.6		

F - Fairbank

ND - Nedelle Downs

Y - Yentrac

FH - Fernhill


 Top 10% Top 20% Top 30%

## 70 FAIRBANK SOUTHDOWN RAMS

21

LOT	TAG	SIRE	BT	Bwt	Wwt	Pwwt	Pfat	Pemd	LEQ	TCP	\$	Purchaser
81	200938	Y180821	S	0.09	5.3	8.4	0.6	0.8	106.8	105.0		
82	201211	F170831	Tw	0.05	3.6	6.9	0.3	1.2	100.8	104.5		
83	201080	F170881	Tw	0.22	5.5	8.8	0.3	0.6	103.8	103.8		
84	201064	F180881	Tw	-0.06	4.9	8.0	-0.3	0.2	98.6	100.9		
<b>Fairbank Average</b>				0.25	7.0	11.1	0.1	0.5	107.3	109.6		
<b>Southdown Average</b>				0.22	6.2	9.6	0.0	0.5	106.9	108.6		

F - Fairbank

ND - Nedelle Downs

Y - Yentrac

FH - Fernhill

 Top 10%

 Top 20%

 Top 30%

# TERMINAL COMPOSITE - SOUTHDOWN X POLL DORSET



The breed originally started out in 2014 as an attempt to tighten the gestation length on our Poll Dorsets by picking up with a Southdown after a 4 week joining. We have since then refined this to specifically select ewes to go into this program. Both Poll Dorset and Southdown ewes are used with sires matched accordingly. Rams have been developed to have black feet and open faces and that extra bit of vigour and growth.



## 19 FAIRBANK SOUTHDOWN X POLL DORSET TERMINAL COMPOSITE RAMS

23

LOT	TAG	SIRE	BT	Bwt	Wwt	Pwwt	Pfat	Pemd	LEQ	TCP	\$	Purchaser
85	201040	LP140859	Tw	0.35	8.7	13.5	-0.5	2.1	129.9	135.7		
86	201200	LP140859	Tw	0.51	9.0	12.8	-0.9	1.0	125.7	130.2		
87	200065	F180881	Tw	0.26	8.7	13.1	-1.0	0.9	120.1	126.1		
88	200026	F180881	S	0.25	8.0	12.6	-0.1	1.6	119.5	126.0		
89	200056	F180881	Tr	0.37	8.4	12.7	-0.5	1.0	120.7	125.0		
90	200012	F180881	Tw	0.18	7.7	11.8	-0.5	1.2	116.9	121.8		
<b>Fairbank Average</b>				0.27	7.7	11.9	-0.2	1.8	123.0	127.6		
<b>Terminal Average</b>				0.35	9.4	14.3	0.4	1.7	130.7	137.6		

F - Fairbank

LP - Lambpro



Top 10%



Top 20%



Top 30%

## 19 FAIRBANK SOUTHDOWN X POLL DORSET TERMINAL COMPOSITE RAMS

24

LOT	TAG	SIRE	BT	Bwt	Wwt	Pwwt	Pfat	Pemd	LEQ	TCP	\$	Purchaser
91	200955	LP140859	Tw	0.46	9.7	14.5	0.1	2.6	134.7	139.9		
92	201092	LP140859	Tw	0.35	8.6	13.1	0.5	2.7	131.5	134.3		
93	200068	F170821	Tw	0.02	7.5	12.4	-0.2	1.9	118.5	125.2		
94	200417	F170831	Tw	0.15	4.9	8.3	0.4	2.6	118.7	122.1		
95	200038	F170821	Tr	0.19	7.8	12.4	-0.9	1.0	112.5	121.3		
96	200069	F170821	Tw	0.06	7.1	11.5	-0.5	1.3	114.7	121.1		
<b>Fairbank Average</b>				0.27	7.7	11.9	-0.2	1.8	123.0	127.6		
<b>Terminal Average</b>				0.35	9.4	14.3	0.4	1.7	130.7	137.6		

F - Fairbank

LP - Lambpro

Top 10%

Top 20%

Top 30%

## 19 FAIRBANK SOUTHDOWN X POLL DORSET TERMINAL COMPOSITE RAMS

25

LOT	TAG	SIRE	BT	Bwt	Wwt	Pwwt	Pfat	Pemd	LEQ	TCP	\$	Purchaser
97	201106	LP140859	S	0.31	8.0	11.9	0.2	2.6	128.6	132.5		
98	200055	F180881	Tr	0.38	9.0	14.2	-0.4	1.2	124.9	129.5		
99	200920	LP140859	Tr	0.24	6.5	10.0	-0.2	2.1	125.8	128.4		
100	200974	LP140859	Tw	0.20	6.8	9.8	0.2	2.5	124.6	127.0		
101	200957	LP140859	Tw	0.33	7.8	11.3	-0.5	1.5	122.8	126.9		
102	200919	LP140859	Tw	0.35	6.6	10.3	-0.2	1.6	124.6	126.7		
103	200973	LP140859	Tw	0.21	6.4	9.4	0.2	2.2	123.4	125.3		
<b>Fairbank Average</b>				0.27	7.7	11.9	-0.2	1.8	123.0	127.6		
<b>Terminal Average</b>				0.35	9.4	14.3	0.4	1.7	130.7	137.6		

# TERMINAL COMPOSITE - CHAROLLAIS X POLL DORSET/SOUTHDOWN



The Charollais cross project came about due to having some outstanding ewes coming out of our Southdown x Dorset terminal program. We identified the Charollais had exceptional hind quarters and natural low birth weights. We wanted to back this up with some Lambplan ASBV's, but also add some body length to the Charollais and improve the face colouring. These rams are ideal for specific ewe lamb joinings. Majority of our 2021 offering are out of ewe lambs and not born until Sep/Oct.

## 12 FAIRBANK CHAROLLAIS X POLL DORSET/SOUTHDOWN TERMINAL COMPOSITE RAMS

27

LOT	TAG	SIRE	BT	Bwt	Wwt	Pwwt	Pfat	Pemd	LEQ	TCP	\$	Purchaser
104	201234	SL170002	S	0.30	8.2	12.3	-0.6	1.7	122.8	130.3		
105	201227	SL170002	Tw	0.40	8.6	12.6	-1.1	0.7	117.8	125.7		
106	201242	SL170002	Tr	0.29	7.6	11.3	-0.8	0.8	117.8	124.2		
107	201256	SL170002	Tw	0.14	7.3	10.6	-0.3	1.1	121.4	123.7		
108	201252	SL170002	Tw	0.25	6.9	10.4	-0.6	0.9	118.3	123.1		
109	201231	SL170002	Tr	0.10	6.8	9.9	-0.5	1.3	115.7	121.3		
<b>Fairbank Average</b>				0.21	6.8	10.0	-0.6	1.0	116.4	121.7		
<b>Terminal Average</b>				0.35	9.4	14.3	-0.4	1.7	130.7	137.6		

SL - Sunnylands


 Top 10% Top 20% Top 30%

## 12 FAIRBANK CHAROLLAIS X POLL DORSET/SOUTHDOWN TERMINAL COMPOSITE RAMS

28

LOT	TAG	SIRE	BT	Bwt	Wwt	Pwwt	Pfat	Pemd	LEQ	TCP	\$	Purchaser
110	201290	SL170002	S	0.32	7.2	10.7	-0.4	1.0	120.2	123.9		
111	201280	SL170002	S	0.05	5.2	7.3	-0.8	1.0	116.3	121.7		
112	201238	SL170002	Tw	0.16	6.6	9.7	-0.7	0.7	113.9	119.4		
113	201271	SL170002	Tw	0.32	7.1	10.2	-0.8	0.6	111.6	117.9		
114	201292	SL170002	Tw	0.18	5.7	8.2	-0.3	0.8	111.8	115.2		
115	121254	SL170002	Tw	0.16	5.0	7.3	-0.3	0.5	108.7	111.8		
<b>Fairbank Average</b>				0.21	6.8	10.0	-0.6	1.0	116.4	121.7		
<b>Terminal Average</b>				0.35	9.4	14.3	-0.4	1.7	130.7	137.6		

SL - Sunnylands


 Top 10% Top 20% Top 30%

# WHITE SUFFOLK



Our White Suffolks commenced in 1996 using Fairbank Poll Dorset ewes and the proven South Australian White Suffolk genetics. Since then carefully selected mainland and Tasmanian sires have been utilised to produce structurally correct and well muscled rams suited to a wide range of conditions and locations. Our White Suffolk's are very consistent and express great breed type, structural correctness and muscling

This years White Suffolk offering include progeny of:

- **Ella Matta 17/300** - Used by AI for strong Lambplan data and proven performance in other studs. Progeny display good growth. 17 rams on offer.
- **Somerset 16/67** - Used as a Lambplan link sire with over 1,000 progeny across Australia. Trait leader for TCP 165.75, low Bwt and positive fat. 12 rams on offer.
- **Fairbank 18/665** - Very correct low Bwt ram. 8 rams on offer.
- **Somerset 17/147** - Another high performing link sire with trait leader for TCP 163.31 and Pemd 4.33. 6 rams on offer.
- **Fairbank 19/506** - Used as a ram lamb to back up AI program and then retained by Fairbank. Semen sold to South Australia. Trait leader for eating quality. 5 rams on offer.
- **Fairbank 18/675** - Moderate sized ram with good Pemd only used as a late pick up. 2 rams on offer.



# 50 FAIRBANK WHITE SUFFOLK RAMS

LOT	TAG	SIRE	BT	Bwt	Wwt	Pwwt	Pfat	Pemd	LEQ	TCP	\$	Purchaser
116	200718	EM170300	Tw	0.36	9.8	16.4	0.9	3.7	149.8	152.7		
117	200740	S170147	S	0.39	9.9	15.6	0.6	3.6	144.6	152.4		
118	200598	EM170300	S	0.52	11.1	17.4	0.1	2.3	141.9	148.3		
119	200732	EM170300	S	0.49	10.3	16.0	-0.4	2.6	144.6	147.5		
120	200797	F180665	Tw	0.47	10.4	15.3	-0.4	1.7	141.1	143.9		
121	200706	EM170300	S	0.36	9.5	14.6	0.0	2.0	135.1	138.9		
<b>Fairbank Average</b>				0.35	9.4	14.8	0.1	2.4	139.7	144.6		
<b>Terminal Average</b>				0.35	9.4	14.3	-0.4	1.7	130.7	137.6		

F - Fairbank

EM - Ella Matta

S - Somerset



Top 10%



Top 20%



Top 30%

# 50 FAIRBANK WHITE SUFFOLK RAMS

LOT	TAG	SIRE	BT	Bwt	Wwt	Pwwt	Pfat	Pemd	LEQ	TCP	\$	Purchaser
122	200692	S160067	S	0.38	10.3	16.4	0.4	3.3	146.7	153.8		
123	200596	EM170300	S	0.41	11.0	17.7	0.0	2.4	146.8	150.8		
124	200702	S160067	Tw	0.07	8.0	13.7	-0.3	3.0	146.7	149.4		
125	200723	S170147	S	0.52	11.5	17.0	-0.4	2.3	139.8	149.0		
126	200661	S160067	S	0.47	9.8	15.1	-0.2	2.3	140.8	148.3		
127	200719	EM170300	Tw	0.36	9.3	15.2	0.8	3.4	144.1	148.3		
<b>Fairbank Average</b>				0.35	9.4	14.8	0.1	2.4	139.7	144.6		
<b>Terminal Average</b>				0.35	9.4	14.3	-0.4	1.7	130.7	137.6		

F - Fairbank

EM - Ella Matta

S - Somerset

 Top 10%

 Top 20%

 Top 30%

# 50 FAIRBANK WHITE SUFFOLK RAMS

LOT	TAG	SIRE	BT	Bwt	Wwt	Pwwt	Pfat	Pemd	LEQ	TCP	\$	Purchaser
<b>128</b>	200814	F190506	Tw	0.37	10.4	16.9	0.0	1.5	142.0	146.5		
<b>129</b>	200806	F190506	S	0.37	10.3	15.7	-1.0	0.9	138.7	145.8		
<b>130</b>	200645	EM170300	Tw	0.40	9.2	15.4	0.4	2.3	141.4	144.0		
<b>131</b>	200801	F190506	Tr	0.19	8.8	14.8	-0.7	1.0	141.6	141.6		
<b>132</b>	200621	EM170300	Tw	0.20	7.8	12.5	0.2	2.7	135.7	139.8		
<b>133</b>	200753	F180665	S	0.25	9.2	13.5	-0.3	1.1	128.3	133.5		
<b>Fairbank Average</b>				0.35	9.4	14.8	0.1	2.4	139.7	144.6		
<b>Terminal Average</b>				0.35	9.4	14.3	-0.4	1.7	130.7	137.6		

F - Fairbank

EM - Ella Matta

S - Somerset



Top 10%



Top 20%



Top 30%

## 50 FAIRBANK WHITE SUFFOLK RAMS

34

LOT	TAG	SIRE	BT	Bwt	Wwt	Pwwt	Pfat	Pemd	LEQ	TCP	\$	Purchaser
134	200638	S160067	S	0.40	9.9	15.8	0.7	4.0	152.1	158.6		
135	200665	S170147	S	0.38	10.4	16.9	-0.2	2.6	142.0	150.9		
136	200642	F180665	Tw	0.50	11.0	17.1	0.0	2.0	148.9	150.7		
137	200627	S160067	Tw	0.39	10.8	16.7	0.1	2.3	144.1	150.5		
138	200659	S160067	Tw	0.37	10.6	17.1	-0.1	2.0	143.6	149.8		
139	200626	S160067	Tw	0.28	9.7	15.0	0.4	2.9	143.7	149.5		
<b>Fairbank Average</b>				0.35	9.4	14.8	0.1	2.4	139.7	144.6		
<b>Terminal Average</b>				0.35	9.4	14.3	-0.4	1.7	130.7	137.6		

F - Fairbank

EM - Ella Matta

S - Somerset


 Top 10% Top 20% Top 30%

## 50 FAIRBANK WHITE SUFFOLK RAMS

35

LOT	TAG	SIRE	BT	Bwt	Wwt	Pwwt	Pfat	Pemd	LEQ	TCP	\$	Purchaser
140	200611	EM170300	Tw	0.44	10.6	17.0	0.2	1.9	142.8	145.6		
141	200677	EM170300	Tw	0.36	8.9	14.4	0.3	2.9	138.9	143.2		
142	200709	EM170300	S	0.37	9.0	14.4	-0.4	2.3	137.0	142.6		
143	200773	F180665	Tw	0.31	9.5	14.6	-0.2	1.7	136.4	140.8		
144	200761	F180675	Tw	0.55	9.4	13.0	0.3	2.3	134.9	138.1		
145	200640	S160067	Tw	0.34	8.9	13.6	0.4	2.2	126.7	135.1		
<b>Fairbank Average</b>				0.35	9.4	14.8	0.1	2.4	139.7	144.6		
<b>Terminal Average</b>				0.35	9.4	14.3	-0.4	1.7	130.7	137.6		

F - Fairbank

EM - Ella Matta

S - Somerset



Top 10%



Top 20%



Top 30%

## 50 FAIRBANK WHITE SUFFOLK RAMS

36

LOT	TAG	SIRE	BT	Bwt	Wwt	Pwwt	Pfat	Pemd	LEQ	TCP	\$	Purchaser
146	200682	S160067	Tw	0.14	8.5	13.9	1.0	3.8	144.2	149.9		
147	200667	S170147	Tw	0.40	8.6	13.4	-0.4	3.1	138.2	148.1		
148	200655	EM170300	Tw	0.40	9.6	15.2	-0.1	2.5	141.0	145.7		
149	200693	S160067	S	0.37	9.6	16.1	0.4	2.3	141.1	144.9		
150	200793	EM170300	Tw	0.42	10.8	16.3	1.6	3.4	143.1	144.9		
151	200794	EM170300	Tw	0.33	9.7	15.5	1.3	3.2	142.3	144.5		
<b>Fairbank Average</b>				0.35	9.4	14.8	0.1	2.4	139.7	144.6		
<b>Terminal Average</b>				0.35	9.4	14.3	-0.4	1.7	130.7	137.6		

F - Fairbank

EM - Ella Matta

S - Somerset



Top 10%



Top 20%



Top 30%

# 50 FAIRBANK WHITE SUFFOLK RAMS

LOT	TAG	SIRE	BT	Bwt	Wwt	Pwwt	Pfat	Pemd	LEQ	TCP	\$	Purchaser
152	200683	S160067	Tw	0.10	8.1	13.3	0.8	3.1	139.6	144.4		
153	200772	F180665	Tw	0.31	9.7	15.0	0.3	2.3	139.5	143.8		
154	200819	F190506	Tw	0.30	9.0	13.5	0.0	1.7	138.5	143.3		
155	200796	F190506	Tw	0.15	7.0	11.4	-0.8	1.5	135.0	137.6		
156	200669	S170147	Tw	0.28	10.0	15.7	-0.2	3.1	142.6	151.1		
157	200685	S170147	Tw	0.35	8.3	13.1	-0.4	2.7	135.0	143.8		
<b>Fairbank Average</b>				0.35	9.4	14.8	0.1	2.4	139.7	144.6		
<b>Terminal Average</b>				0.35	9.4	14.3	-0.4	1.7	130.7	137.6		

F - Fairbank

EM - Ella Matta

S - Somerset

 Top 10%

 Top 20%

 Top 30%

## 50 FAIRBANK WHITE SUFFOLK RAMS

38

LOT	TAG	SIRE	BT	Bwt	Wwt	Pwwt	Pfat	Pemd	LEQ	TCP	\$	Purchaser
158	200651	EM170300	S	0.25	7.9	12.7	0.1	3.0	136.4	141.3		
159	200582	EM170300	Tw	0.35	9.4	15.4	0.2	2.0	138.7	141.2		
160	200745	EM170300	Tw	0.30	8.2	13.2	-0.2	2.4	135.4	140.1		
161	200591	F180675	Tw	0.46	8.8	13.0	0.2	2.3	135.5	138.7		
162	200746	F180665	Tw	0.35	8.2	12.5	0.3	2.2	134.5	137.0		
163	200639	S160067	Tw	0.40	8.6	13.1	0.5	2.0	130.3	135.4		
<b>Fairbank Average</b>				0.35	9.4	14.8	0.1	2.4	139.7	144.6		
<b>Terminal Average</b>				0.35	9.4	14.3	-0.4	1.7	130.7	137.6		

F - Fairbank

EM - Ella Matta

S - Somerset



Top 10%



Top 20%



Top 30%



# 50 FAIRBANK WHITE SUFFOLK RAMS

LOT	TAG	SIRE	BT	Bwt	Wwt	Pwwt	Pfat	Pemd	LEQ	TCP	\$	Purchaser
164	200767	F180665	Tw	0.10	7.4	11.4	0.9	2.7	126.0	132.2		
165	200754	F180665	Tw	0.38	9.1	13.3	-0.2	1.0	129.2	131.7		
<b>Fairbank Average</b>				0.35	9.4	14.8	0.1	2.4	139.7	144.6		
<b>Terminal Average</b>				0.35	9.4	14.3	-0.4	1.7	130.7	137.6		

F - Fairbank

EM - Ella Matta

S - Somerset



Top 10%



Top 20%



Top 30%

# POLL DORSET



Our Poll Dorsets were established in 1969 by selecting the top ewes from leading Tasmanian studs. Since then we have carefully selected the best available genetics by either natural mating or A.I as well as our own top rams to produce commercially relevant industry sires.

- **Hillcroff Farms 11/548** - Number 1 ram in Australia for TCP and # 2 for eating quality. Huge impact sire and sire of Fairbank keeper ram. 13 rams on offer.
- **Gooramma 16/308** - Outcross ram used for his excellent breed type and muscling. Sire of Fairbank keeper ram. 12 rams on offer.
- **Bruan 17/146** - Grand son of HF 548 above. Excellent lambplan ASBV's 11 rams on offer.
- **Lambpro 14/859** - Proven sire at Fairbank and also at other studs. Sons have now sold to \$17,000. He continues to have a strong influence. Limited joinings due to other sons retained and high number of daughters in our flock but still has 11 rams on offer.
- **Fairbank 18/33** - Champion Launceston. Very correct ram with great breed type. 7 rams on offer.
- **Fairbank 18/394** - Son of LP 140859. Moderate well fleshed ram. 7 rams on offer.
- **Fairbank 17/364** - Son of LP 140859. Long structurally correct with trait leader with Pwwt. 5 rams on offer.

- **Fairbank 16/433** - LP 140859 son only used as a pick up. 1 ram on offer.
- **Valma 17/289** - Purchased \$14,200 with Sunnybanks and Capelands. Only used as a pick up. 1 ram on offer.

LOT	TAG	SIRE	BT	Bwt	Wwt	Pwwt	Pfat	Pemd	LEQ	TCP	\$	Purchaser
<b>166</b>	200096	HF110548	S	0.53	10.8	16.0	-0.9	2.9	155.8	160.2		
<b>167</b>	200138	G160308	S	0.41	11.3	17.1	-1.1	2.5	142.7	151.8		
<b>168</b>	200119	B170146	Tw	0.39	9.5	14.1	-1.0	2.4	149.0	149.0		
<b>169</b>	200210	G160308	Tw	0.37	10.3	15.1	-1.1	2.3	140.6	148.3		
<b>Fairbank Average</b>				0.42	9.5	14.1	-0.6	2.8	142.0	147.5		
<b>Terminal Average</b>				0.35	9.4	14.3	-0.4	1.7	130.7	137.6		

F - Fairbank   HF - Hillcroft Farms   L - Lambpro   B - Braun   V - Valma    Top 10%    Top 20%    Top 30%

## 68 FAIRBANK POLL DORSET RAMS

43

LOT	TAG	SIRE	BT	Bwt	Wwt	Pwwt	Pfat	Pemd	LEQ	TCP	\$	Purchaser
170	200180	G160308	Tw	0.44	10.1	14.7	-1.0	2.0	138.0	144.7		
171	200261	F180033	S	0.40	8.7	12.9	0.1	3.0	134.4	140.1		
172	200238	HF110548	S	0.48	10.3	15.4	-0.9	3.1	156.4	159.6		
173	200118	B170146	Tw	0.52	10.0	15.2	-1.1	2.6	147.9	153.2		
174	200351	LP140859	Tw	0.33	9.4	14.6	-0.3	3.1	146.0	150.6		
175	200244	F170364	Tw	0.55	10.9	16.5	-0.3	3.0	135.4	146.2		
<b>Fairbank Average</b>				0.42	9.5	14.1	-0.6	2.8	142.0	147.5		
<b>Terminal Average</b>				0.35	9.4	14.3	-0.4	1.7	130.7	137.6		

F - Fairbank   HF - Hillcroft Farms   L - Lambpro   B - Braun   V - Valma    Top 10%    Top 20%    Top 30%

## 68 FAIRBANK POLL DORSET RAMS

44

LOT	TAG	SIRE	BT	Bwt	Wwt	Pwwt	Pfat	Pemd	LEQ	TCP	\$	Purchaser
176	200211	G160308	Tw	0.34	10.6	15.3	-0.7	2.2	140.4	146.0		
177	200208	B170146	S	0.40	8.9	13.4	-0.2	2.4	138.9	143.2		
178	200224	HF110548	Tw	0.33	9.4	14.5	-0.5	3.6	157.5	160.8		
179	200255	B170146	Tw	0.35	8.1	13.2	0.0	4.3	154.1	158.0		
180	200271	LP140859	S	0.52	10.4	16.0	-0.5	3.2	150.4	156.7		
181	200207	B170146	Tw	0.40	9.5	14.0	-0.3	3.5	147.9	151.1		
<b>Fairbank Average</b>				0.42	9.5	14.1	-0.6	2.8	142.0	147.5		
<b>Terminal Average</b>				0.35	9.4	14.3	-0.4	1.7	130.7	137.6		

F - Fairbank   HF - Hillcroft Farms   L - Lambpro   B - Braun   V - Valma    Top 10%    Top 20%    Top 30%

## 68 FAIRBANK POLL DORSET RAMS

45

LOT	TAG	SIRE	BT	Bwt	Wwt	Pwwt	Pfat	Pemd	LEQ	TCP	\$	Purchaser
182	200239	HF110548	S	0.44	8.4	12.0	-0.8	2.8	149.8	150.2		
183	200279	B170146	S	0.42	8.0	11.6	-0.4	3.5	144.0	148.5		
184	200159	B170146	Tw	0.52	9.5	14.0	-0.6	2.6	143.6	148.0		
185	200163	G160308	Tw	0.31	9.9	15.0	-0.4	2.7	138.4	145.5		
186	200248	LP140859	Tw	0.36	8.4	12.5	0.0	3.2	137.3	142.9		
187	200307	F180033	Tw	0.59	10.6	15.4	-1.1	2.0	131.5	142.7		
<b>Fairbank Average</b>				0.42	9.5	14.1	-0.6	2.8	142.0	147.5		
<b>Terminal Average</b>				0.35	9.4	14.3	-0.4	1.7	130.7	137.6		

F - Fairbank

HF - Hillcroft Farms

L - Lambpro

B - Braun

V - Valma



Top 10%



Top 20%



Top 30%

## 68 FAIRBANK POLL DORSET RAMS

46

LOT	TAG	SIRE	BT	Bwt	Wwt	Pwwt	Pfat	Pemd	LEQ	TCP	\$	Purchaser
188	200197	F180033	Tw	0.35	8.8	13.5	-0.3	3.0	132.5	141.1		
189	200299	F170364	Tw	0.46	10.6	15.7	-0.9	1.7	129.4	137.9		
190	200175	HF110548	Tw	0.50	11.9	17.3	-1.0	3.7	158.3	166.2		
191	200148	HF110548	S	0.36	9.3	14.2	-0.8	3.0	155.6	156.5		
192	200149	LP140859	S	0.42	10.1	15.3	-0.5	3.8	146.1	155.1		
193	200144	HF110548	Tw	0.17	9.2	13.6	-0.3	3.9	152.6	154.6		
<b>Fairbank Average</b>				0.42	9.5	14.1	-0.6	2.8	142.0	147.5		
<b>Terminal Average</b>				0.35	9.4	14.3	-0.4	1.7	130.7	137.6		

F - Fairbank

HF - Hillcroff Farms

L - Lambpro

B - Braun

V - Valma



Top 10%



Top 20%



Top 30%



## 68 FAIRBANK POLL DORSET RAMS

47

LOT	TAG	SIRE	BT	Bwt	Wwt	Pwwt	Pfat	Pemd	LEQ	TCP	\$	Purchaser
194	200147	HF110548	S	0.51	9.6	13.2	-0.7	3.0	151.5	152.9		
195	200165	HF110548	S	0.43	8.6	11.7	-1.6	2.4	149.3	151.4		
196	200411	F180394	Tw	0.70	10.7	15.8	-1.0	2.0	136.4	145.7		
197	200272	F180033	S	0.67	10.5	15.7	-0.6	2.3	138.6	145.2		
198	200311	F170364	S	0.38	10.0	14.4	-0.5	2.3	140.0	143.4		
199	200348	F180394	Tw	0.66	10.3	15.3	-0.9	1.6	136.9	142.2		
<b>Fairbank Average</b>				0.42	9.5	14.1	-0.6	2.8	142.0	147.5		
<b>Terminal Average</b>				0.35	9.4	14.3	-0.4	1.7	130.7	137.6		

F - Fairbank

HF - Hillcroft Farms

L - Lambpro

B - Braun

V - Valma

Top 10%
 Top 20%
 Top 30%

## 68 FAIRBANK POLL DORSET RAMS

48

LOT	TAG	SIRE	BT	Bwt	Wwt	Pwwt	Pfat	Pemd	LEQ	TCP	\$	Purchaser
200	200264	G160308	Tw	0.42	9.6	14.3	-1.0	1.9	133.2	141.1		
201	200284	LP140859	Tw	0.35	9.0	14.0	0.0	4.5	151.0	157.5		
202	200206	B170146	Tw	0.39	8.4	12.4	-0.3	3.8	146.6	151.6		
203	200089	B170146	Tw	0.41	9.5	14.9	-0.6	2.5	149.3	150.9		
204	200257	LP140859	Tw	0.47	9.8	14.7	-0.3	3.0	142.3	148.6		
205	200157	LP140859	Tw	0.41	9.6	13.6	-1.1	2.5	145.0	148.3		
<b>Fairbank Average</b>				0.42	9.5	14.1	-0.6	2.8	142.0	147.5		
<b>Terminal Average</b>				0.35	9.4	14.3	-0.4	1.7	130.7	137.6		

F - Fairbank

HF - Hillcroff Farms

L - Lambpro

B - Braun

V - Valma



Top 10%



Top 20%



Top 30%

## 68 FAIRBANK POLL DORSET RAMS

49

LOT	TAG	SIRE	BT	Bwt	Wwt	Pwwt	Pfat	Pemd	LEQ	TCP	\$	Purchaser
206	200186	G160308	Tr	0.25	9.2	14.5	-0.5	2.9	139.9	146.8		
207	200133	G160308	Tw	0.32	9.0	13.4	-0.7	2.7	137.4	144.3		
208	200083	G160308	Tr	0.31	8.9	13.5	-0.6	2.3	134.3	140.8		
209	200135	G160308	Tw	0.39	9.9	14.9	-1.2	1.3	133.5	140.7		
210	200426	F180033	Tw	0.32	7.9	11.9	0.0	3.0	128.7	136.0		
211	200100	G160308	S	0.45	9.4	14.1	-1.1	1.4	130.6	138.5		
<b>Fairbank Average</b>				0.42	9.5	14.1	-0.6	2.8	142.0	147.5		
<b>Terminal Average</b>				0.35	9.4	14.3	-0.4	1.7	130.7	137.6		

F - Fairbank

HF - Hillcroft Farms

L - Lambpro

B - Braun

V - Valma



Top 10%



Top 20%



Top 30%

## 68 FAIRBANK POLL DORSET RAMS

50

LOT	TAG	SIRE	BT	Bwt	Wwt	Pwwt	Pfat	Pemd	LEQ	TCP	\$	Purchaser
<b>212</b>	200097	HF110548	S	0.43	9.1	13.4	-1.0	2.9	156.0	157.3		
<b>213</b>	200087	B170146	Tw	0.31	8.3	13.1	-0.7	3.9	148.9	155.0		
<b>214</b>	200126	HF110548	Tw	0.41	9.2	14.1	-0.9	2.5	152.8	153.7		
<b>215</b>	200177	LP140859	S	0.36	9.2	13.6	-0.3	3.5	143.5	149.8		
<b>216</b>	200109	LP140859	S	0.47	9.7	14.3	-0.6	2.9	141.1	148.2		
<b>217</b>	200192	F180394	Tr	0.69	10.2	15.4	-0.4	2.3	135.7	143.3		
<b>Fairbank Average</b>				0.42	9.5	14.1	-0.6	2.8	142.0	147.5		
<b>Terminal Average</b>				0.35	9.4	14.3	-0.4	1.7	130.7	137.6		

F - Fairbank

HF - Hillcroff Farms

L - Lambpro

B - Braun

V - Valma



Top 10%



Top 20%



Top 30%

## 68 FAIRBANK POLL DORSET RAMS

51

LOT	TAG	SIRE	BT	Bwt	Wwt	Pwwt	Pfat	Pemd	LEQ	TCP	\$	Purchaser
<b>218</b>	200256	LP140859	Tw	0.42	9.2	13.3	-0.7	2.3	136.3	142.3		
<b>219</b>	200344	F170364	Tr	0.47	10.0	15.0	-0.7	2.2	133.7	141.2		
<b>220</b>	200113	F180033	Tw	0.31	8.6	12.7	-0.4	2.7	133.2	140.3		
<b>221</b>	200438	F180394	Tw	0.46	9.1	12.8	-0.8	2.4	130.8	139.2		
<b>222</b>	200093	G160308	Tw	0.33	8.8	13.4	-0.4	2.1	133.6	139.2		
<b>223</b>	200313	F180394	Tw	0.49	9.1	12.9	-0.3	2.2	131.0	136.2		
<b>Fairbank Average</b>				0.42	9.5	14.1	-0.6	2.8	142.0	147.5		
<b>Terminal Average</b>				0.35	9.4	14.3	-0.4	1.7	130.7	137.6		

F - Fairbank   HF - Hillcroft Farms   L - Lambpro   B - Braun   V - Valma    Top 10%    Top 20%    Top 30%

## 68 FAIRBANK POLL DORSET RAMS

52

LOT	TAG	SIRE	BT	Bwt	Wwt	Pwwt	Pfat	Pemd	LEQ	TCP	\$	Purchaser
<b>224</b>	200254	B170146	Tw	0.43	8.1	13.0	-0.1	4.4	154.8	159.3		
<b>225</b>	200143	HF110548	Tw	0.22	8.5	12.9	-0.4	3.8	155.3	155.4		
<b>226</b>	200142	HF110548	S	0.39	8.4	11.6	-0.7	3.4	151.4	152.5		
<b>227</b>	200301	LP140859	Tw	0.38	8.9	13.3	-0.2	3.5	139.9	147.3		
<b>228</b>	200193	F180394	Tr	0.52	9.4	14.2	-0.6	2.3	132.7	141.7		
<b>229</b>	200300	F170364	Tw	0.42	11.2	16.4	-0.6	1.6	138.6	140.9		
<b>Fairbank Average</b>				0.42	9.5	14.1	-0.6	2.8	142.0	147.5		
<b>Terminal Average</b>				0.35	9.4	14.3	-0.4	1.7	130.7	137.6		

F - Fairbank   HF - Hillcroft Farms   L - Lambpro   B - Braun   V - Valma    Top 10%    Top 20%    Top 30%

## 68 FAIRBANK POLL DORSET RAMS

53

LOT	TAG	SIRE	BT	Bwt	Wwt	Pwwt	Pfat	Pemd	LEQ	TCP	\$	Purchaser
230	200329	F180394	Tw	0.54	9.4	13.4	-0.5	2.4	132.6	140.1		
231	200303	F180033	Tw	0.36	9.0	13.1	-0.3	2.6	131.2	138.5		
232	200444	V170289	Tw	0.20	8.0	12.3	-0.1	3.2	132.1	138.2		
233	200364	F160433	Quad	0.30	8.5	12.7	-1.0	1.9	129.7	135.5		
<b>Fairbank Average</b>				0.42	9.5	14.1	-0.6	2.8	142.0	147.5		
<b>Terminal Average</b>				0.35	9.4	14.3	-0.4	1.7	130.7	137.6		

F - Fairbank   HF - Hillcroff Farms   L - Lambpro   B - Braun   V- Valma    Top 10%    Top 20%    Top 30%

**BUYER'S INSTRUCTION SLIP**

Trading Name: .....

Contact Name: .....

Postal Address: .....

.....Post Code .....

Phone: .....

Agent's Name: .....

Lots Purchased

Lot	Price	Lot	Price

Delivery Instructions: .....

.....

Transfer: Y / N

Insurance: Y / N      30 days      3 months

6 months      12 months

Transit

Expected Delivery Date: .....

Carrier: .....

Buyers Signature: .....

**Payment Due 26th November 2021.**

**No verbal instructions can be accepted.**





## Fairbank 20/983

Keeper ram by Fernhill 15/16  
*(Supreme Champion, Geelong)*

Very balanced and correct ram  
with excellent muscling.

<b>Bwt</b>	<b>Wwt</b>	<b>Pwwt</b>	<b>Pfat</b>	<b>Pemd</b>	<b>TCP</b>
0.21	8.12	13.31	-0.50	0.21	115.56

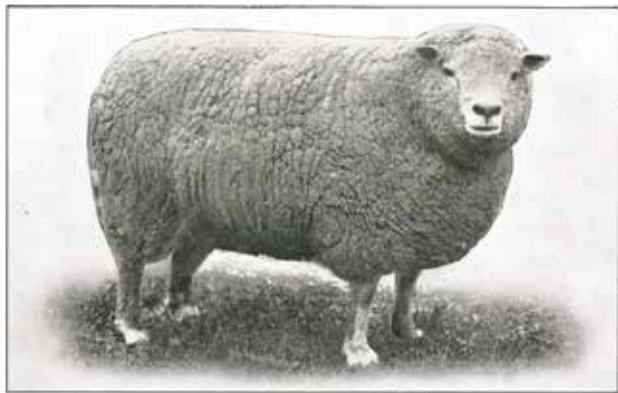


## Fairbank 20/1153 Tw

Keeper ram by Fairbank 18/881 Tw.

One of the cleanest rams we have bred. Virtually wool free on face and legs. Backed with a massive hind quarter on a moderate frame size.

<b>Bwt</b>	<b>Wwt</b>	<b>Pwwt</b>	<b>Pfat</b>	<b>Pemd</b>	<b>TCP</b>
0.23	7.86	12.44	-0.60	-0.30	107.75



**Fairbank “PETER”**

Champion Southdown Ram,  
Melbourne Royal Show, 1926.

**Fairbank 16/821**  
Champion Southdown Ram,  
Aust. Sheep & Wool Show, 2018



---

**After over 90 years and 5 generations, breeding quality sheep still remains our focus!**



## 174 Hagley Station Lane, Hagley, TAS

**From the North West** - Take Hagley exit, first left past the poppy factory, travel through Hagley, past school to roundabout. Turn right into Station Lane, (C507), Fairbank is approximately 2.5kms on right.

**From Northern Midlands** - Travel on Bass Highway, take Hagley exit, turn left at top of ramp (C507) over the railway line, Fairbank is 1.74kms on right.