

# WOMBOOTA BORDER LEICESTERS



# SALE

**THURSDAY 30<sup>TH</sup> SEPTEMBER 2021**

at 1.00pm, Womboota Pastoral Shearing Shed,  
3783 Perricoota Road, Womboota Via Moama, NSW

## WOMBOOTA



## PASTORAL

**Vendors**

**Malcolm Starritt 0429 893 200**

Ian Starritt 03 5489 3250

malcolm@wombootapastoral.com

**100 ONE YEAR OLD RAMS**

12 Specially Selected Rams

88 Flock Rams

15 Specially Selected Stud Ready Ewes

**Nutrien**  
Livestock

Wilson Beer  
0428 505 520

**Elders**

Matt O'Connor  
0427 845 954



**AuctionsPlus**  
Buy and Sell stock nationally



www.superborders.com

[www.wombootapastoral.com](http://www.wombootapastoral.com)



# AuctionsPlus

## How to Register and Bid on AuctionsPlus

1

Go to [www.auctionsplus.com.au](http://www.auctionsplus.com.au) to register at least 48 hours before the sale.

2

Select "**Sign Up**" in the top right hand corner.

3

Fill out your name, mobile number, email address and create a password.

4

Go to your emails and confirm the account.

5

Return to AuctionsPlus and log in.

6

Select "**Dashboard**" and then select "**Request Approval to Buy**".

7

Fill in buyer details and once completed go back to Dashboard.

8

Complete buyer induction module (approx. 30 minutes).

9

AuctionsPlus will email you to let you know that your account has been approved.

10

Log in on sale day and connect to auction.

11

Bid using the two-step process – unlock the bid button and bid at that price.

12

If you are successful, the selling agent will contact you post sale to organise delivery and payment.

For more information please contact us on:

Phone: (02) 9262 4222

Email: [info@auctionsplus.com.au](mailto:info@auctionsplus.com.au)



## WHY WOMBOOTA PASTORAL BORDER LEICESTERS?

### HISTORY -

Our family has been breeding some of the best Border Leicesters in Australia for 107 years.

### WE USE OUR OWN -

We benefit from superior stud genetics in our own prime lamb operations.

### PROVEN PROFIT -

We are proud of our clients continued success with phenomenal sales of Womboota Border Leicesters progeny.

- Rams will be penned from 11.00am on the day of the sale.
- Full Lambplan ASBV's available on each ram and ewe.
- We will be operating under a COVID safe plan. To reduce the COVID risk we respectfully ask that no more than two people per business attend.
- At the back of this catalogue we have added a letter from the NSW minister for health exempting livestock sales from the public health order.
- Please check with your state health Authorities on the latest permits required to attend our sale.
- We are using AuctionsPlus if you are either uncomfortable or unable to make it on sale day. We have photographed all the lots so that you can see in detail what you are bidding on.
- Complementary delivery arrangements to all successful purchasers will be made in accordance with border regulations. We will do our best to make a timely delivery.
- All breeding sheep at Womboota Pastoral have been Gudair vaccinated since 2004.
- Rams carry an Australian Health Score of 8 out of a possible 10 points under the previous ABC scheme.
- Womboota Border Leicester Stud is registered with the Australian Stud Sheep Breeders Association
- Womboota Border Leicester Stud is Accredited Brucellosis free.
- Womboota Pastoral is located within a footrot protected area, and in the Riverina bio security area.
- Light refreshments available on the day of the sale.

We look forward to seeing you at our sale. Regards, the Starritt Family, Womboota



Wilson Beer 0428 505 520



Matt O'Connor 0427 845 954

[www.wombootapastoral.com](http://www.wombootapastoral.com)

[www.superborders.com](http://www.superborders.com)

[www.sheepgenetics.org.au](http://www.sheepgenetics.org.au)

Womboota Border Leicester Stud

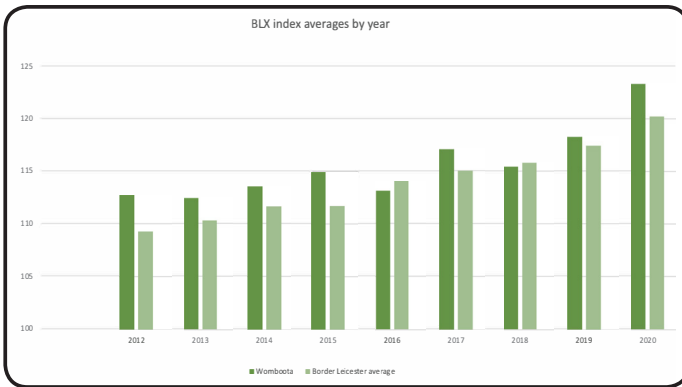
womboota\_borderleicester

\*Outside Agents 4% Rebate if in attendance on the day of sale.



Proudly printed by EMPD 5480 7545





WOMBOOTA  
  
 PASTORAL



[www.superborders.com](http://www.superborders.com)

**SuperBorders** is the brand name for Border Leicester Rams that are of high genetic merit for a first cross production system. The official **SuperBorder** yellow ear tags allow **SuperBorder** rams to be easily identified.

To qualify as a **SuperBorder** a Border Leicester ram must be above the 50th percentile for the breed based on the BLX index (Border Leicester Cross Index). The 50th percentile index value is calculated based on the 15th of August LAMBPLAN run each year. It is used to determine **SuperBorder** rams for that selling season. The BLX Index has been developed for production systems using Border Leicester sires crossed to Merino dams to produce first cross progeny. BLX balances maintaining mature size with significant improvements in early growth and reproduction. A higher BLX index targets animals that are more profitable in this production system.

The cut off for the 2020 drop is 120.5. Everything on or over this index is a **Superborder** for the 2021 sale

Not all rams sold by **SuperBorder** members are necessarily **SuperBorder** quality, but are bred by committed, registered breeders striving for genetic gain. **SuperBorder** rams must be structurally sound and of good breed type.

The **SuperBorders** group is made up of a number of studs across 5 states who work together in meeting market requirements for objectively measured maternal genetics in the Australian Lamb Industry. **SuperBorders** members are industry leaders with longstanding involvement in research, trials and industry resource flocks.

First cross lambs sired by 100% **SuperBorder** rams may be sold as 'Bred from **SuperBorders**'. Special yellow pen cards and **SuperBorders** ear tags are available to identify these animals when sold in physical sales. Virtual yellow sale cards are also available for **SuperBorders** progeny sold on online sale platforms. Please speak with us if you would like either of these marketing materials.



# Percentile Report

Analysis **Mat-1st X Sire Breed** Dated **15-Aug-21**

Animals born in **2020** Count **15630**

Band	Bwt	Wwt	Mwwt	Pwwt	Plat	Pemd	Ywt	Yfat	Yemd	Ygtw	Yfd	Pfec	NLW	YNLW	PSC	Awt	MCP+	BLX	MWPP+	Mat\$
	kg	kg	kg	kg	mm	mm	kg	mm	mm	mm	u	%	%	%	cm	kg				
0	-0.6	11.1	3.0	17.0	2.6	3.1	21.7	3.2	2.5	32	-1.6	-66	29	38	7.0	25.2	175.0	166.8	214.3	191.2
1	-0.2	8.5	2.2	13.8	1.5	2.0	15.3	2.0	1.6	17	-0.8	-53	24	28	5.4	17.1	155.6	152.0	191.1	170.4
2	-0.1	8.1	2.0	13.0	1.3	1.9	14.5	1.7	1.5	16	-0.6	-49	23	26	5.1	16.3	152.3	148.9	186.2	167.1
3	-0.1	7.9	1.9	12.6	1.2	1.7	14.0	1.5	1.4	15	-0.5	-46	22	25	4.9	15.8	149.9	146.9	183.1	164.7
4	0.0	7.7	1.8	12.2	1.1	1.6	13.6	1.4	1.3	14	-0.3	-45	21	24	4.7	15.4	148.2	144.8	180.7	162.5
5	0.0	7.5	1.8	11.9	1.0	1.6	13.3	1.3	1.2	14	-0.3	-43	21	23	4.5	15.0	146.5	143.3	178.1	160.7
10	0.1	7.0	1.5	10.9	0.7	1.3	12.3	0.9	1.0	12	0.0	-38	19	20	4.1	14.0	139.6	137.7	169.7	153.9
15	0.1	6.6	1.4	10.3	0.5	1.1	11.6	0.7	0.9	11	0.1	-34	17	18	3.7	13.4	135.8	134.1	164.6	149.9
20	0.1	6.3	1.2	9.9	0.4	0.9	11.1	0.5	0.7	10	0.3	-31	16	16	3.5	12.8	133.2	131.6	161.4	147.0
25	0.2	6.1	1.1	9.5	0.3	0.8	10.7	0.3	0.6	9	0.4	-29	15	15	3.2	12.4	131.0	129.4	158.7	144.7
30	0.2	5.9	1.0	9.1	0.2	0.7	10.4	0.2	0.5	9	0.5	-26	14	14	3.1	12.0	129.1	127.6	156.2	142.6
35	0.2	5.7	0.9	8.8	0.1	0.6	10.0	0.1	0.4	8	0.6	-24	13	13	2.9	11.6	127.4	125.8	153.9	140.5
40	0.2	5.5	0.9	8.5	0.0	0.5	9.7	0.0	0.4	7	0.7	-22	12	12	2.8	11.2	125.7	124.1	151.7	138.5
45	0.3	5.3	0.8	8.2	-0.1	0.4	9.3	-0.1	0.3	7	0.8	-21	12	12	2.6	10.8	124.0	122.3	149.3	136.5
50	0.3	5.1	0.7	7.9	-0.2	0.3	9.0	-0.2	0.2	6	1.0	-18	11	11	2.5	10.5	122.2	120.5	146.8	134.2
55	0.3	4.8	0.6	7.5	-0.2	0.2	8.6	-0.4	0.1	6	1.1	-16	10	11	2.4	10.1	120.3	118.5	144.3	132.1
60	0.3	4.6	0.5	7.2	-0.3	0.1	8.3	-0.5	0.0	5	1.2	-14	9	10	2.3	9.7	118.3	116.5	141.3	129.9
65	0.3	4.4	0.4	6.8	-0.4	0.0	7.9	-0.6	-0.1	4	1.3	-12	8	9	2.2	9.3	116.1	114.4	138.2	127.2
70	0.4	4.1	0.3	6.4	-0.5	-0.1	7.5	-0.7	-0.1	4	1.4	-9	7	9	2.1	8.8	113.7	112.1	134.5	124.4
75	0.4	3.8	0.2	5.9	-0.6	-0.2	7.0	-0.8	-0.2	3	1.5	-6	6	8	1.9	8.4	111.4	109.9	130.2	121.4
80	0.4	3.5	0.1	5.3	-0.7	-0.3	6.4	-1.0	-0.3	2	1.6	-2	5	7	1.8	7.8	109.1	107.8	126.1	118.4
85	0.4	3.1	0.0	4.6	-0.8	-0.4	5.7	-1.1	-0.4	2	1.8	2	3	6	1.6	7.1	106.9	105.5	121.9	115.3
90	0.5	2.6	-0.2	3.8	-0.9	-0.6	4.8	-1.3	-0.6	0	2.0	8	0	4	1.4	6.3	104.5	103.2	117.0	112.2
95	0.5	1.9	-0.4	2.9	-1.1	-0.8	3.7	-1.7	-0.8	-2	2.5	18	-2	0	1.1	5.1	101.2	100.3	110.5	108.0
96	0.5	1.7	-0.5	2.6	-1.2	-0.9	3.5	-1.8	-0.9	-2	2.6	20	-3	-1	1.0	4.8	100.3	99.6	108.9	106.8
97	0.5	1.5	-0.5	2.4	-1.3	-1.0	3.1	-1.9	-1.0	-3	2.8	26	-3	-2	0.9	4.4	98.9	98.5	107.0	105.3
98	0.6	1.2	-0.7	1.9	-1.4	-1.1	2.8	-2.2	-1.1	-4	3.0	30	-4	-3	0.7	3.9	97.2	96.9	105.0	103.4
99	0.6	0.8	-0.8	1.4	-1.7	-1.4	2.1	-2.7	-1.3	-5	3.4	43	-5	-4	0.4	3.3	94.7	94.3	101.5	100.7
100	0.7	-3.8	-1.9	-5.0	-3.3	-3.0	-3.6	-5.3	-2.6	-12	4.7	126	-10	-7	-1.0	-1.9	83.5	83.0	72.5	85.3



# LAMBPLAN

Analysis: MATERNAL, 1 August 2021

Breed 02 Flock 4575 Years 2020 to 2021



Sires Animal ID	Inbreeding	Prog.Flks	BWT	MWWT	WWT	PWWT	PFAT	PEMD	YWT	YGFW	NLW	PSC	PFEC	BLX	Mat\$	Sire	
																Dam	Sire
024411-2017-177269	1.4%	190:6	0.5	0.8	8.9	13.4	0.2	0.2	14.5	11.0	18	4.0	-19	141.0	162.1	024411-2010-100606	024411-2013-130284
JOHNOS		Acc:	91	68	94	94	93	92	90	85	52	88	41	63	69		
024411-2018-180134		63:2	-0.3	1.5	-0.9	0.9	2.2	2.9	3.2	-15.9	11	2.1	13	125.9	128.1	020041-1998-98X049	
JOHNOS		Acc:	81	58	88	88	86	84	86	81	49	83	64	56	64		
024411-2018-180209	2.9%	48:2	0.4	1.2	7.0	11.3	0.7	0.3	13.9	11.6	27	3.0	10	146.1	166.0	024411-2011-110083	024411-2015-155021
JOHNOS		Acc:	81	60	88	88	88	86	81	79	51	83	66	58	66		
024575-2013-130019	1.4%	207:4	0.8	-1.3	6.6	9.0	-0.1	-1.0	10.8	6.9	9	1.6	-31	110.8	127.1	024575-2011-110091	024575-2016-160306
WOMBOOTA		Acc:	89	88	95	95	94	93	94	90	66	92	65	74	78		
024575-2014-140227	2.7%	305:3	0.5	1.2	5.1	7.3	-0.9	-0.4	10.3	4.7	-2	2.0	-39	105.5	122.0	020041-2011-11P150	024575-2010-100082
WOMBOOTA		Acc:	89	87	95	95	95	93	95	92	62	94	77	72	77		
024575-2017-170156	1.2%	79:1	0.3	0.6	6.9	9.0	-0.2	0.3	10.1	19.4	8	2.0	-21	131.1	143.1	024575-2015-150021	020041-2012-12Q221
WOMBOOTA		Acc:	82	59	91	91	91	90	90	87	45	89	64	56	64		
024575-2017-170190	1.5%	42:1	0.3	0.9	5.5	9.0	0.4	0.9	10.4	12.3	18	2.7	2	143.3	153.6	024575-2014-140119	024575-2015-150021
WOMBOOTA		Acc:	76	56	88	88	87	86	81	86	44	87	54	62	62		
024575-2018-180006	7.6%	14:1	0.5	0.5	7.0	9.3	-1.1	0.3	10.3	15.6	14	2.3	2	133.6	148.1	024575-2016-160063	024575-2011-110269
WOMBOOTA		Acc:	69	55	82	83	82	80	79	72	41	80	59	50	59		
024575-2018-180085	1.4%	25:1	0.2	0.4	3.5	6.2	1.0	1.3	9.7	19.2	13	1.1	1	128.4	140.2	024575-2016-160010	024575-2012-120156
WOMBOOTA		Acc:	71	53	85	85	84	82	80	82	39	84	49	58	58		
024575-2018-180162	0.5%	42:1	0.1	0.9	4.9	8.0	1.4	0.7	8.3	6.4	17	1.9	1	135.6	148.1	024575-2011-110052	024575-2015-150022
WOMBOOTA		Acc:	75	53	88	88	87	86	81	83	39	85	51	60	60		
024575-2018-180218	3.4%	26:1	0.4	0.6	4.4	7.1	0.5	0.5	9.4	6.8	4	1.9	1	112.9	126.9	024575-2014-140003	024575-2016-160063
WOMBOOTA		Acc:	71	52	85	86	85	83	80	83	38	83	49	58	58		
024575-2018-180285	0.5%	44:1	0.4	1.5	5.6	9.8	-0.1	0.2	11.5	8.2	1	2.6	1	117.2	135.7	024569-2012-120164	024575-2012-120110
WOMBOOTA		Acc:	75	46	87	87	86	84	80	82	31	85	46	56	56		
024786-2018-180116	6.0%	273:7	0.3	-0.4	6.7	10.3	0.0	1.9	8.9	15.3	24	4.3	32	152.1	163.4	024786-2016-160093	024575-2015-150040
NEW ARMATREE		Acc:	94	71	96	96	96	96	84	76	55	96	36	66	73		



**WOMBOOTA BORDER LEICESTER STUD - 40 rams (Pens of 2. To be sold individually)**

Lot number	Animal Id	BWT kg	MWWT kg	WWT kg	PWWT kg	PFAT mm	PEMD mm	YWT kg	YGFW %	NLW %	PSC cm	SB number	BLX index	Sire	Dam	
13	8.20 T Acc	0.3 57	1 40	5.4 67	8.8 68	0.9 67	0.7 64	9.9 69	16.2 67	13 33	2.2 70	24770	133.1 38	85.18	3.14	
Purchaser																
14	308.20 T Acc	0.4 56	1.5 43	5.9 69	9.7 69	0.5 68	0.3 65	15.4 71	10.8 68	23 38	2.7 70	24719	132.5 41	209.18	173.18	
Purchaser																
15	370.20 T Acc	0.4 54	1.1 43	4.8 68	7.7 69	0.4 68	0.3 65	9.4 70	12.6 69	10 34	1.5 70	23394	122.9 39	218.18	4.14	
Purchaser																
16	21.20 T Acc	0.6 59	1.2 43	7.6 69	11.8 70	0.6 69	0.2 66	13.7 71	4.1 68	20 37	2.1 70	24712	139.2 41	209.18	253.18	
Purchaser																
17	233.20 Acc	0.5 56	1.5 42	7.6 68	12 69	0.1 68	0.4 66	14.7 71	-2.8 68	22 37	3.7 70	24716	141.6 41	209.18	153.18	
Purchaser																
18	47.20 T Acc	0.5 58	1 42	6.5 67	10.2 68	0 67	0.6 65	12.9 70	11.8 68	12 36	2.4 69	24756	131.4 40	190.17	24.18	
Purchaser																
19	121.20 T Acc	0.5 55	1 40	6.4 67	9 68	-0.3 67	0.8 64	11.4 69	11.6 67	16 33	2.1 69	24708	133.1 38	6.18	154.18	
Purchaser																
20	19.2 Acc	0.4 61	1 43	7.2 70	10.4 71	-0.2 70	0.6 67	12.1 72	14 70	11 35	1.7 72	24742	133.4 41	156.17	37.18	
Purchaser																
21	11.20 T Acc	0.2 60	0.4 45	5.9 70	9.5 70	0.7 70	1.1 67	11.6 72	7.9 68	22 38	1.8 71	24736	137.9 42	209.18	156.18	
Purchaser																
22	134.20 Acc	0.3 56	1.6 36	4.8 68	7.6 69	0.2 68	0.3 65	8.1 70	9 56	6 31	1.6 69	24761	121.4 37	162.18	51.18	
Purchaser																





**WOMBOOTA BORDER LEICESTER STUD - 40 rams (Pens of 2. To be sold individually)**

Lot number	Animal id	BWT	MWWT	kg	WWT	kg	PWWT	kg	PFAT	mm	PEMD	mm	YMT	kg	YGFW	%	NLW	%	PSC	cm	SB number	BLX index	Sire	Dam
33	122.20 T	0.4	1	6.3	9.2	-0.5	0.8	12.7	11.5	16	1.9	33	69	24758	131.5	38	6.18	154.18						
Purchaser																								
34	187.20 T	0.4	0.3	5.5	8.9	0.1	-0.1	12.4	10.5	14	2	70	68	24771	126.9	39	190.17	70.18						
Purchaser																								
35	46.20 T	0.1	1.1	5.1	8	1.2	1.3	8.4	6.1	3	1.6	68	69	24759	122.6	39	162.18	17.17						
Purchaser																								
36	356.20 T	0.4	0.9	5	8.2	-0.2	0	10.9	4.4	1	2.3	70	68	109.8	109.8	40	285.18	230.15						
Purchaser																								
37	117.20 T	0.3	0.7	6.8	10.5	-0.4	-0.2	12.6	4.7	13	2.8	67	69	24711	125.1	40	209.18	177.18						
Purchaser																								
38	256.20	0.2	1	4.7	7	-0.2	0.3	8	6.9	7	2	71	68	24721	124	39	162.18	116.12						
Purchaser																								
39	197.20 T	0.1	1.5	1.7	4	1.1	1.4	6.8	-7.9	9	1.3	67	71	24715	132.4	42	134.18	325.13						
Purchaser																								
40	89.20 TR	0.2	1	3.4	7	1.2	1.7	8.4	-6.6	13	2.8	66	69	23402	132.5	42	134.18	145.13						
Purchaser																								
41	368.20 T	0.4	0.9	6.5	9.1	-0.1	0.6	9.2	14.6	10	2.8	70	72	24704	134	42	156.17	163.14						
Purchaser																								
42	314.20 T	0.3	0.9	4.8	7.2	-0.4	0	9.1	11.5	12	2.4	64	69	24780	128.1	39	190.17	123.17						
Purchaser																								

**WOMBOOTA BORDER LEICESTER STUD -40 rams (Pens of 2. To be sold individually)**

Lot number	Animal Id	BWT	MWWT	WWT	PWWT	PFAT	PEMD	YWT	YGFW	NLW	PSC	SB number	BLX index	Sire	Dam
		kg	kg	kg	kg	mm	mm	kg	%	%	cm				
43	226.20 T	0.3	0.9	5	8	-0.4	0.9	8.1	15.3	16	2.7	24762	138.8	116.18	135.14
	Acc	61	52	71	72	71	69	72	70	39	73		45		
Purchaser															
44	120.20 T	0.4	1.1	5.8	8.4	0.2	0.2	9.8	5	11	2.3	23387	128.8	190.17	249.17
	Acc	57	41	67	68	67	64	69	67	33	69		38		
Purchaser															
45	377.20	0	1.6	2.9	5.3	0.5	1.6	7.3	-6.7	8	2.4	24782	126.2	134.18	156.19
	Acc	54	36	68	68	67	64	70	68	32	690		37		
Purchaser															
46	33.20 T	0.3	0.6	5.3	8.9	0.5	-0.1	9.6	8.6	22	1.8	23383	137.5	209.18	327.17
	Acc	61	46	70	71	70	67	72	69	39	71		43		
Purchaser															
47	50.20 T	0.4	1.3	7.2	9.9	-0.8	-0.1	11.5	17.5	7	2.6	24775	128.4	156.17	245.17
	Acc	61	43	70	71	70	67	72	69	36	72		41		
Purchaser															
48	212.20 T	0.5	0	6.7	10.6	-0.3	-0.8	12.5	9.1	6	2.7		115	285.18	46.17
	Acc	59	40	68	69	68	65	69	67	32	70		38		
Purchaser															
49	99.20 T	0.3	1	6	9	-0.5	-0.2	10.5	16.4	8	2.7		120.4	269.17	170.15
	Acc	63	47	70	71	70	68	71	70	37	72		42		
Purchaser															
50	283.20 T	0.3	0.5	4.3	7.7	1.4	0	10.3	3.4	9	1.9		116	162.18	105.15
	Acc	54	40	68	69	68	66	70	68	32	70		38		
Purchaser															
51	342.20	0.4	1.1	5.6	8	0.2	0.3	9.9	5.4	10	3		120	218.18	23.13
	Acc	56	46	70	70	69	67	71	70	37	71		42		
Purchaser															
52	62.20 TR	0.2	1.4	4.9	7.1	-0.1	0.8	7	3.4	2	2		119.3	162.18	272.16
	Acc	54	36	68	69	68	65	70	67	32	69		37		
Purchaser															

**WOMBOOTA BORDER LEICESTER STUD - 48 Rams (16 Pens of three rams to be sold individually)**

Lot number	Animal Id	BWT	MWWT	kg	kg	kg	kg	kg	mm	mm	mm	mm	kg	kg	YWT	YGFW	NLW	PSC	S# number	BLX index	Sire	Dam
		kg	kg	kg	kg	kg	kg	kg	mm	mm	mm	mm	kg	kg	%	%	%	cm				
53	379.20T	0.4	0.6	5.9	8.5	-0.1	0.8	9.2	4.9	14	2.8	23371	129.2	116.18	84.15							
	Acc	61	50	71	72	71	69	71	69	38	73		44									
Purchaser																						
54	67.20	0.4	0.8	5.9	8	-0.5	-0.7	8.8	6.3	2	2		107	162.18	10.15							
	Acc	58	36	68	69	68	65	70	67	32	69		37									
Purchaser																						
55	68.20	0.3	0	4.9	7.5	0.4	0.9	9.7	11.2	11	2.1	24707	123.8	85.18	222.18							
	Acc	55	36	67	68	67	64	69	68	32	70		37									
Purchaser																						
56	254.20T	0.4	0.7	5.6	8	-0.3	-0.3	9.9	6	11	2.3	24724	122.3	190.17	156.16							
	Acc	55	44	69	69	68	65	70	69	36	70		40									
Purchaser																						
57	315.20T	0.4	0.9	4.9	7.3	-0.3	0.1	9.9	8.8	10	1.2	24706	124	190.17	123.17							
	Acc	53	41	67	68	67	64	69	66	34	69		39									
Purchaser																						
58	318.20T	0.5	0.5	6.9	10.1	0	0.4	11.4	8.4	11	2.2	24774	128.1	269.17	96.14							
	Acc	60	49	71	71	70	68	72	70	39	72		43									
Purchaser																						
59	330.20	0.5	1.2	5.7	8.8	-0.2	-0.1	10.3	7.3	5	1.7		117	285.18	89.18							
	Acc	54	37	68	69	68	65	70	68	32	70		37									
Purchaser																						
60	79.20T	0.4	0.7	5.1	7.7	-0.2	0.5	9.3	9.7	4	2		117.4	285.18	363.13							
	Acc	58	42	68	69	68	65	70	68	32	70		38									
Purchaser																						
61	131.20T	0.5	1	5.6	8.6	-0.2	0.2	11.8	6.4	12	2.1	24713	125.5	227.14	142.17							
	Acc	63	55	70	71	70	68	72	71	44	72		47									
Purchaser																						



**WOMBOOTA BORDER LEICESTER STUD - 48 Rams (16 Pens of three rams to be sold individually)**

Lot number	Animal id	BWT kg	MWWT kg	WWT kg	PWWT kg	PFAT mm	PEMD mm	YWT kg	YGFW %	NLW %	PSC cm	SB number	BLX index	Sire	Dam
<b>71</b>	354.20 T	0.3	-0.2	5	7.7	-0.1	1	8.5	9.5	16	2.6	24734	131.3	116.18	243.14
	Acc	61	50	71	72	71	69	71	69	38	73		44		
<b>Purchaser</b>															
<b>72</b>	299.20 T	0.4	0.5	5.1	7.3	0	0.5	8.5	10.5	9	1.5	24760	125.8	190.17	247.17
	Acc	55	43	68	69	68	65	70	68	35	70		40		
<b>Purchaser</b>															
<b>73</b>	277.20 T	0.4	0.9	6.1	8.9	-0.1	-0.1	10.6	12	14	2.7	23398	125.5	218.18	24.14
	Acc	55	45	69	70	68	65	70	67	35	70		40		
<b>Purchaser</b>															
<b>74</b>	184.20	0	-0.1	2.7	5.5	1	0.8	9.4	5.1	13	1		117.2	85.18	52.18
	Acc	58	38	69	70	69	66	71	70	34	72		39		
<b>Purchaser</b>															
<b>75</b>	118.20 T	0.2	0.7	5.5	8.3	-0.4	-0.1	10.6	6.6	12	2.1	24723	121.6	209.18	177.18
	Acc	58	41	68	68	67	65	70	67	36	69		40		
<b>Purchaser</b>															
<b>76</b>	263.20	0.2	0.1	4	6.6	0.1	0.8	8.5	11.4	9	1.5		117.9	85.18	107.14
	Acc	53	41	69	69	69	66	65	66	34	71		40		
<b>Purchaser</b>															
<b>77</b>	358.20 T	0.1	1.6	2.6	5.7	1.3	1.1	6.5	5	10	2.7	24752	130.9	134.18	131.15
	Acc	57	44	69	70	68	66	71	79	37	71		41		
<b>Purchaser</b>															
<b>78</b>	246.20	0.5	0.9	6.3	8.9	0	-0.2	10.3	1.3	9	2.8		119.7	218.18	103.18
	Acc	55	40	70	71	70	67	72	71	34	72		40		
<b>Purchaser</b>															
<b>79</b>	235.20	0.3	-0.4	4.4	7	1	-0.2	9.4	13.6	8	1.6		111.7	85.18	20.16
	Acc	54	37	68	69	67	65	70	67	33	71		38		
<b>Purchaser</b>															
<b>80</b>	145.20	0	0.7	2.5	4.7	1.2	1.2	9.1	-2.1	12	1.6		118.9	134.18	142.19
	Acc	60	41	69	70	69	66	71	69	36	71		41		
<b>Purchaser</b>															
<b>81</b>	265.20	0.2	0.7	4.7	8	1.4	0.4	7.6	13.5	9	1.9	24728	124.5	85.18	292.11
	Acc	55	44	69	70	69	66	71	70	36	72		41		
<b>Purchaser</b>															
<b>82</b>	305.20 T	0.4	0.3	5.4	7.6	-0.1	0.8	8.5	8.6	4	1		116.6	218.18	132.18
	Acc	53	39	68	69	68	65	70	69	33	70		38		
<b>Purchaser</b>															

**WOMBOOTA BORDER LEICESTER STUD - 48 Rams (16 Pens of three rams to be sold individually)**

Lot number	Animal id	BWT kg	MWWT kg	WWT kg	PWWT kg	PFAT mm	PEMD mm	YVWT kg	YGFW %	NLW %	PSC cm	SB number	BLX index	Site	Dam		
83	393.20 T Acc	0	1.5	49	70	71	70	67	72	70	41	72	24703	131.1	134.18	269.11	
Purchaser																	
84	205.20 T Acc	0.4	0.3	6	7.9	-1.3	-0.8	10.6	11.9	13	3	120.4	227.14	268.15			
Purchaser																	
85	199.20 T Acc	0.2	0.5	41	68	69	68	65	70	68	33	70	24750	120.7	85.18	146.13	
Purchaser																	
86	279.20 T Acc	0.4	1.4	40	69	69	68	66	70	69	34	71	24740	122.2	285.18	215.17	
Purchaser																	
87	276.20 T Acc	0.4	0.9	45	69	70	69	66	71	69	35	71	24726	129.1	218.18	24.14	
Purchaser																	
88	250.20 Acc	0.3	1.1	36	67	68	67	64	70	68	31	70	112.1	218.18	181.18		
Purchaser																	
89	322.20 T Acc	0.1	0.8	42	69	70	68	66	70	67	34	70	24710	124.5	162.18	159.13	
Purchaser																	
90	361.20 T Acc	0.4	0.7	41	68	69	67	65	70	67	35	70	24754	129.3	190.17	147.18	
Purchaser																	
91	338.20 T Acc	0.3	0.2	42	68	69	68	65	70	69	34	70	108.6	85.18	20.14		
Purchaser																	



**WOMBODATA BORDER LEICESTER STUD - 48 Rams (16 Pens of three rams to be sold individually)**

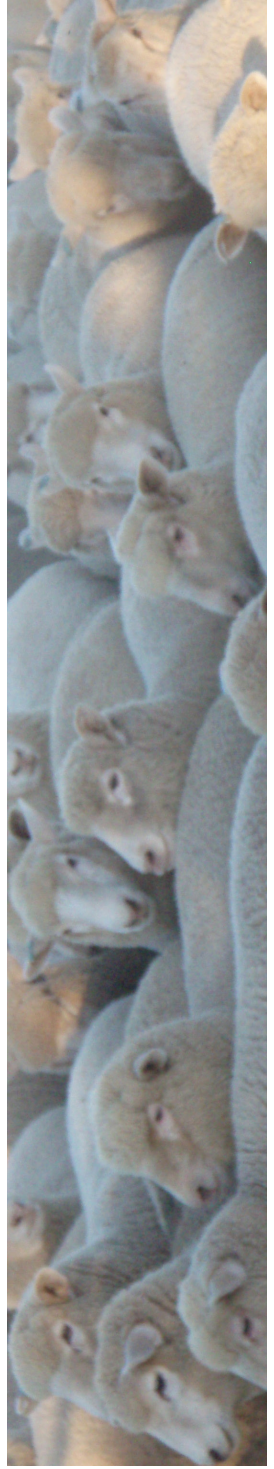
Lot number	Animal Id	BWT	MWWT	kg	kg	PWWT	PFAT	PEMD	YMT	YGRW	NLW	PSC	SB number	BLX index	Site	Dam
		kg	kg	kg	mm	mm	mm	kg	%	%	%	cm				
92	94.20 T	0.5	6.3	9.3	0.3	0.6	12.2	7.1	12	3			24727	127.8	218.18	159.18
	Acc	58	69	69	68	66	71	69	34	71				39		
Purchaser																
93	335.20 T	0.4	5.3	8.6	0.3	1.1	10.4	10	16	2.6			24717	136.3	190.17	219.17
	Acc	56	70	70	69	67	71	70	37	71				42		
Purchaser																
94	294.20 T	0.4	6.5	9.4	-0.1	0	12.2	5.6	17	2.5			24729	127.9	209.18	379.17
	Acc	53	63	64	58	56	61	53	35	55				39		
Purchaser																
95	311.20 T	-0.2	0.4	1.4	-0.5	0	2.9	-3.8	0.6					97.8	Unknown	Unknown
	Acc													20		
Purchaser																
96	165.20 T	0.4	5.8	8	-0.2	-0.4	8.7	2.4	10	1.5				118.4	162.18	155.18
	Acc	56	68	69	68	65	70	68	32	69				37		
Purchaser																
97	355.20 T	0.3	4.3	7.2	-0.1	0.3	9.5	6.7	0	2				110.8	285.18	230.15
	Acc	56	69	70	68	66	70	68	34	71				40		
Purchaser																
98	164.20 T	0.4	5	7.7	-0.1	-0.2	9.9	1.7	6	1.8				112.3	285.18	263.18
	Acc	57	68	69	68	65	70	68	32	70				38		
Purchaser																
99	327.20 T	0.4	5.5	8.1	-0.3	0.4	9.4	3.5	14	2.6			24766	128.9	190.17	208.16
	Acc	56	69	70	69	66	71	68	36	70				41		
Purchaser																
100	136.20	0.3	5.9	9.3	0.6	0.2	11.9	9.4	15	2.3			24733	127.9	209.18	166.17
	Acc	60	69	70	69	67	71	69	38	70				42		
Purchaser																

**WOMBOOTA BORDER LEICESTER STUD - 15 Ewes (3 Pens of five ewes to be sold individually)**

Lot number	Animal Id	BWT	MWWT	WWT	PWWT	PFAT	PEMD	YWT	YGFW	NLW	PSC	BLX index	Sire	Dam
101	245.20	0.3	1.4	5.2	9.3	0.5	0.8	12.3	27	20	2.3	145.4	209.18	70.14
	Acc	57	47	69	70	69	66	66	67	38	60	43		
Purchaser														
102	123.20T	0.4	0.3	4.7	7.6	-0.1	-0.3	10	20.2	14	1.5	121.3	218.18	98.15
	Acc	58	45	69	69	68	66	71	70	36	61	41		
Purchaser														
103	43.20T	0.3	0.9	5.6	8.6	0.5	0.7	9.5	9.9	11	1.9	130.7	162.18	141.17
	Acc	59	39	69	70	69	66	71	69	31	60	38		
Purchaser														
104	95.20T	0.5	0.5	5.4	7.9	0.1	0.3	9.1	9.6	8	1.5	122.2	19.13	313.17
	Acc	62	55	71	71	70	68	72	70	42	62	46		
Purchaser														
105	150.20T	0.3	0.7	5.9	7.6	-1.1	-0.3	10.1	-2.1	15	2	121.8	209.18	349.17
	Acc	59	44	68	69	68	65	70	69	36	58	41		
Purchaser														
106	271.20T	0.5	0.6	6	9.3	-0.4	0.4	11.7	8.6	8	2.7	119.5	218.18	47.17
	Acc	54	41	68	69	68	65	70	68	33	58	39		
Purchaser														
107	111.20T	0.4	0.9	4.6	6.5	0.2	0.3	8.2	14.3	10	1.3	122.8	85.18	256.17
	Acc	55	38	68	68	67	64	69	69	30	58	36		
Purchaser														
108	169.20T	0.4	1.1	5.4	7.5	0.1	0.6	8.8	9.5	11	1.1	129.6	156.17	49.18
	Acc	60	42	70	70	70	67	66	69	33	60	40		
Purchaser														
109	340.20T	0.4	1.1	5.8	8.3	-0.4	-0.2	8.8	17.3	8	2.1	123.5	218.18	23.13
	Acc	55	46	69	70	69	66	71	70	35	61	40		
Purchaser														
110	97.20T	0.4	0.9	5.8	8.8	0	-0.1	9.9	-0.1	7	2.5	118.9	162.18	19.18
	Acc	58	38	69	70	69	66	71	70	32	60	38		
Purchaser														

**WOMBOOTA BORDER LEICESTER STUD - 15 Ewes (3 Pens of five ewes to be sold individually)**

Lot number	Animal Id	BWT kg	MWWT kg	WWT kg	PWWT kg	PFAT mm	PEMD mm	YWT kg	YGFW %	NLW %	PSC cm	SB number	BLX index	Sire	Dam	
111	296.20 T	0.2	0.6	4.6	6.3	0.3	0.2	7.3	3.1	7	1.9		118.4	162.18	20.18	
	Acc	53	37	69	70	69	66	71	70	32	59		38			
<b>Purchaser</b>																
112	142.20	0.4	0.6	5.8	7	-1.2	0	8.4	11.9	7	1.4		121.8	156.17	144.18	
	Acc	59	42	69	70	69	66	71	70	34	60		40			
<b>Purchaser</b>																
113	127.20 T	0.3	0.5	5.5	8.4	-0.1	0.5	10.2	8.3	17	2.6		134.3	190.17	200.15	
	Acc	59	48	70	70	69	67	66	69	38	61		43			
<b>Purchaser</b>																
114	57.20 T	0.5	0.5	5.8	7.9	-0.9	-0.4	9.2	10	16	1.5		131	190.17	25.17	
	Acc	59	46	69	70	69	66	70	59	38	61		43			
<b>Purchaser</b>																
115	129.20 T	0.4	0.5	4.9	5.7	-1.1	0.3	6.4	5	14	1.8		124.8	116.18	199.16	
	Acc	63	50	71	71	70	68	71	69	37	64		43			
<b>Purchaser</b>																





**Exemption under the *Public Health (COVID-19 Additional Restrictions for Delta Outbreak) Order 2021* under the *Public Health Act 2010* (NSW)**

I, Brad Hazzard, Minister for Health and Medical Research, under clause 25 of the *Public Health (COVID-19 Additional Restrictions for Delta Outbreak) Order 2021* (Order), hereby grant the following exemption to that Order

- 1) Despite clause 24 of the Order:
  - a. An auction house in the Regional NSW area can be open to members of the public for the purposes of an auction that is for food supply, livestock, fibre or crops,
  - b. A person can conduct an auction in the Regional NSW area that is open to members of the public for the purposes of an auction that is for food supply, livestock, fibre or crops,
- 2) Despite clause 23 of the Order, a person can participate in an outdoor public gathering in the Regional NSW area for the purposes of an auction that is for food supply, livestock, fibre or crops

In this exemption, the Regional NSW area has the same meaning as the Order.

A handwritten signature in blue ink, appearing to read "Brad Hazzard".

Brad Hazzard  
**Minister for Health and Medical Research**

Date 16<sup>th</sup> August 2021

9.30pm

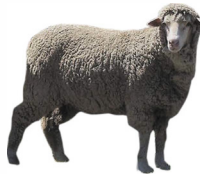
# WOMBOOTA BORDER LEICESTER RAM

# SALE

**1st X EWES SET TO SMASH  
2021 SPRING MARKET**



+



=



**= UP TO 100% MORE \$ THAN PRIME LAMBS**

**Thursday  
September 30th 2021, 1pm**

WOMBOOTA



PASTORAL