



KENMERE CHAROLAIS

8th ANNUAL ON PROPERTY BULL SALE

“Moorak” Rankins Lane, Holbrook NSW



Friday 12th March 2021

Sale commences 1pm

45 Bulls
featuring

**HOMOZYGOUS
POLL BULLS**

Welcome 2021

Kenmere Charolais welcomes everyone to attend our 8th annual bull sale at "Moorak" Rankins Lane, Holbrook, NSW. We are delighted to offer this draft of bulls included in our sale catalogue. Our last sale date Friday 13th March, 2020 marked the date that COVID -19 began to affect our lives following the announcement that afternoon that the 2020 Sydney Royal Easter Show was cancelled. At that time, it was impossible to comprehend what would follow as a result of COVID-19 and how the lives of so many fellow Australians would be impacted.

Fortunately, Australian Agricultural businesses have been resilient during COVID -19 and whilst they have been subject to restrictions and changes, commercial markets have continued with strong demand for our products. Another positive influence during 2020 in Southern, Western and Central NSW was the above average rainfall that has assisted soil moisture that brings positive hope for 2021.

This year we have catalogued 45 bulls for sale that includes:

32 Bulls bred from nine Kenmere Sires

13 Bulls bred from International and Australian AI Sires

The sale features our first drop of bulls bred from Kenmere Maximus a Homozgous son of LT Long Distance who has an impressive set of EBV's that includes Calving ease direct, Gestation length, Birthweight, Milk, Rib and Rump fat, IMF and Domestic and export index. Maximus is typical of a low birth weight bull who is easy to manage and his calves have a quiet temperament. The sons are very suitable for commercial cattle breeders as calves require minimum maintenance and as they grow their weight catches up and by weaning time they are impressive.

Kenmere Synergy's Man is represented by seven sons in the sale . His progeny are moderate frame , full bodied animals that are thick throughout , easy fleshing and carry grunt.

Amongst the International sires are bulls bred from VPI Free Lunch, PCC Sudden Impact and NWMSU Doc Silver. Our 400 Day Scan Data is the result from this group of bulls when they came off grass. The group has then been prepared for the sale.

We strive every year to improve our Charolais Genetics and continue to produce with animals with strong traits raised on grass that are sought after in the industry. Last year enquiries for our Charolais bulls continued to come in after our annual sale and our stud manager, Glenn Trout convinced us to schedule an online sale in August which included 24 Q year bulls and one P Show Bull. We were extremely pleased with the results from this sale and appreciate the support from the buyers that participated at that sale.

Our stud has a strong record of performance recording and we are a member of BREEDPLAN. We hold a Five Star rating awarded as a result of methodical observations, recording data and timely submission to ABRI. The herd averages' include data that has been collected over the last fifteen years. We acknowledge that EBV figures can be a useful guide and understand there are many factors you need to consider when choosing your sale bull.

Kenmere is a J BAS 7 status with a Pesti Virus free herd and we have a consistently strong record of animal health status within our herds and we record scan data on both our bulls and heifers.

The applicable COVID-19 prevailing rules will apply at the 2021 sale. You will be required to register on arrival. Social Distancing inside the shed will also be applied unless the regulations have been relaxed by sale day. Sale Day Safety Precautions- All sale bulls will be penned on the sale day. Vendors should be aware that they enter the cattle pens at their own risk. Children are not allowed to enter the pens.

Sale Bulls will be available for inspection leading into the sale. Please contact us, or our agents to arrange a convenient time. We are happy to assist you prior to the sale in your selection and appraisal of the bulls on offer.



All bulls will be available for inspection prior to the sale by appointment at Holbrook by contacting Ann-Marie Collins 0412 608 043 or Glenn Trout 0409 322 420.

www.kenmerecharolais.com.au



KENMERE CHAROLAIS

8th ANNUAL ON PROPERTY BULL SALE

“Moorak” Rankins Lane, Holbrook NSW

Friday 12th March 2021

Inspection 10.00am

Sale commences 1.00pm

Lunch, Tea & Coffee provided



45 Bulls



Kenmere Charolais

Ann-Marie Collins 0412 608 043

Glenn & Susie Trout 0409 322 420

www.kenmerecharolais.com.au

Nutrien
Livestock™

Peter Godbolt: 0457 591 929
Tim Woodham 0436 015 115



Peter Ruaro:
Scott Campbell



0447 600 825
0428 686 072

Kenmere Sale Bulls

Kenmere Sale Bulls

Kenmere Charolais specialises in the production of small numbers of quality bulls that are typically early finishing bulls suitable for both the Stud and Commercial cattleman. The scale of production enables us to concentrate on the traits we believe are important for producers to maximise profits from their progeny.

The real drivers for a profitable calf drop are live calves born early every year. At Kenmere we concentrate on calf shape, lower birth weight and short gestation as well as finishing ability and temperament.

There has been a strong focus on the finishing ability of the herd over many years. This includes using EBV's and scanning progeny for Rib and Rump fat and Marbling as well as proving our genetics in our own vealer production enterprise at Cookardinia. Charolais are high performance cattle so you will still get a weight boost in the progeny even if the bull hasn't got high growth EBV's within the breed.

The bulls on offer have been bred from Kenmere Stud Sires and several International AI Sires. All the sires have been individually selected to join with Kenmere dams that comprise the backbone of our stud. At Kenmere our breeding programs are carried out on farm in order to retain control over the total operation including the hand selection of recipients and to help maintain the integrity of our JBAS 7 status.

The bull scanning provides an indication on the animal itself and should be closely considered during your evaluation. The most important assessment should be your visual inspection to look at the physical traits that you are seeking.

Disclaimer : People entering onto this property for any purpose whatsoever including attendance at cattle auctions do so at their own risk. We are not liable to you for any personal injury or death suffered by you and for theft loss or damage to any property caused or contributed to by us or by any other person whether caused or contributed to by or by negligence deliberate act or unlawful conduct. "We" or "us" or "our" refer to the owners their employees contractors and agents and each of them. While every care has been taken in compiling this catalogue to ensure accuracy of information supplied no responsibility is accepted for any errors which may have occurred.

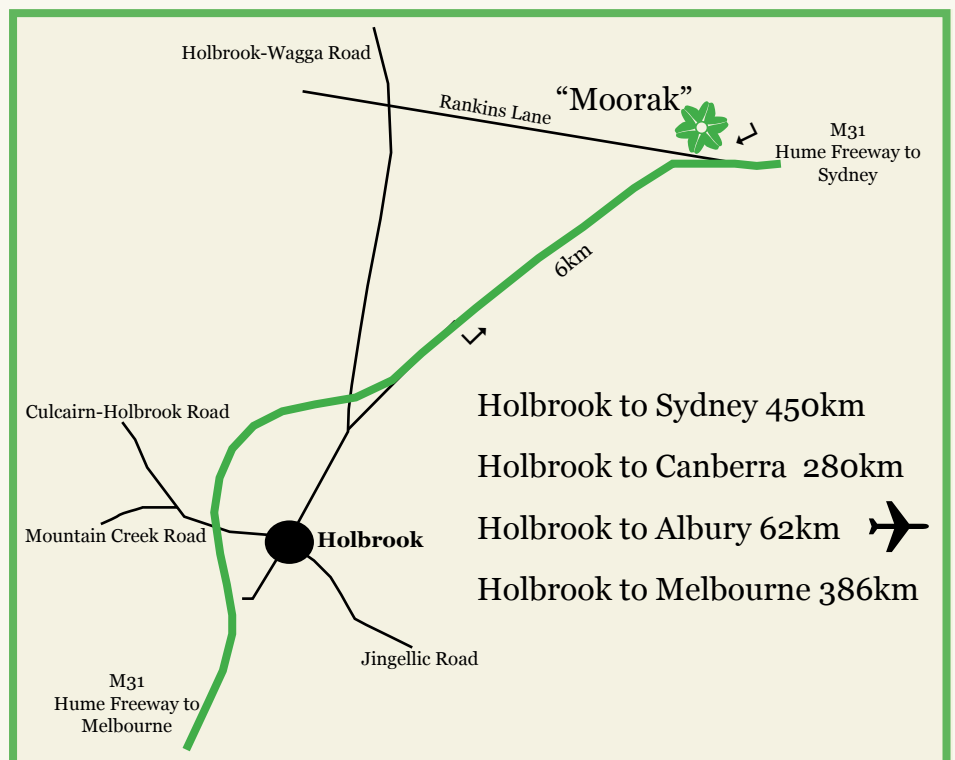
Kenmere Sale Bulls Preparation

At weaning at Kenmere the bulls are given a grain supplement to help them through the transition until adequate pasture is available. The bulls are then pasture raised until approximately 90 days prior to sale. They are then supplemented with a pellet ration to ensure they are ready to go out and work.

A 400 day or 600 day weight and the first set of scan data (fat -rib & rump measurements, eye muscle area & marbling) was collected in November by Bovine Scanning Services, prior to the bulls going on any supplementary feed. This data was submitted to Breedplan to create more accurate carcass figures on the bulls. Breedplan will only accept one set of scan data therefore there's no supplementary feeding influencing these figures.

A pre-sale scan, weight and scrotal measurement will be taken in February to assist buyers in comparing the bulls. The bulls have a lifetime vaccination history and have received a booster shot of 7in1 and Cydectin Pour On Drench in January 21. They will also receive double vaccinations of Pestigard and Vibrovax prior to sale.

All sale bulls have had a DNA sample analysed and the bulls have all been Sire Verified and horn/poll tested. There are 16 Homozygous Polled bulls in the sale draft. Holbrook Vet Clinic will conduct a structural assessment of each bull prior to sale and a semen test will be done to ensure the bulls are ready to work from the day they leave Kenmere Charolais.



Sale Information

Inspection: Inspections by appointment are welcome prior to sale with the listed agents, Ann-Marie Collins or Glenn Trout. Bulls will be on display from 10am on Sale day.

Lunch: Will be available on the day

Health: All catalogued sale bulls have been semen tested and examined for structural soundness by Holbrook Veterinary Centre. The bulls have received booster shots of 7in1, pour on drench and double vaccinations of Pestigard and Vibrovax prior to sale. All sale bulls have been DNA tested and are all PI negative.

Johne's Beef Assurance Score (J-BAS)

Kenmere has enrolled in J-BAS 7 specifically in relation to Johne's Disease and the relevant procedures for cattle. Our registered approved veterinarian has overseen the development of our bio-security plan and we have completed the triennial check test that returned negative results to Johne's disease when tested by an approved laboratory.

Raw Data: All bulls will have Scan Data available prior to the sale for eye muscle area (EMA), rump and rib fat, marbling (IMF%) as well as sale weight and scrotal measurement.

Telephone Link-Up: Mobile telephones will be available. Please arrange with the Vendor or Agent to ensure a line number is available.

Terms And Conditions: Terms of the sale are as per Conditions of Sale, NSW Stud Stock. A copy will be available sale day.

Insurance: Ownership passes at the fall of the hammer. An insurance representative will be in attendance on Sale day

Guarantee: All bulls have been evaluated for structural soundness and fertility and to the best of our knowledge the bulls are in sound working order at the time of the sale. Any claim against a structural breakdown of any animal must be made in writing and accompanied by a Veterinary Certificate within 6 months of the sale date. The Veterinary report must state that, the bull has not suffered any injury, maltreatment or acquired disease which could have affected his breeding ability since delivery to the purchaser. Any bull failing to breed when joined as a single sire mating within six months of the sale may be either replaced with an animal of similar value or credit made available to the value of the purchase price, minus the salvage value, for use at a future sale. The purchaser will be responsible for any costs incurred. **Strictly –No cash refunds.**

Delivery: A delivery instruction slip must be completed and signed by successful purchasers. Stock awaiting delivery will be held free of charge – all care will be taken, but absolutely no responsibility will be accepted for any injury or loss considered during, as a consequence of, or in relation to any holding.

Transport: Stock carriers will be available at the sale to deliver your bulls. Please provide written instructions to the Sale Agents.

Rebate: 4% rebate will be offered to all agents on the condition that a letter of introduction is received 24 hours prior to the sale or the Agent accompanies the purchaser to the sale and settles on their behalf within 7 days. (This clause will be strictly adhered to).

PLEASE NOTE: It is unethical for anyone to promote, advertise or arrange the sale of any cattle, other than those in this sale on this sale premises.



Buy and Sell stock nationally

Auctionsplus

Auctions plus is an alternative bidding platform option if you cannot attend the sale in person. However it is only available to registered users. We recommend registering as soon as possible at least 48 hours prior to the sale.

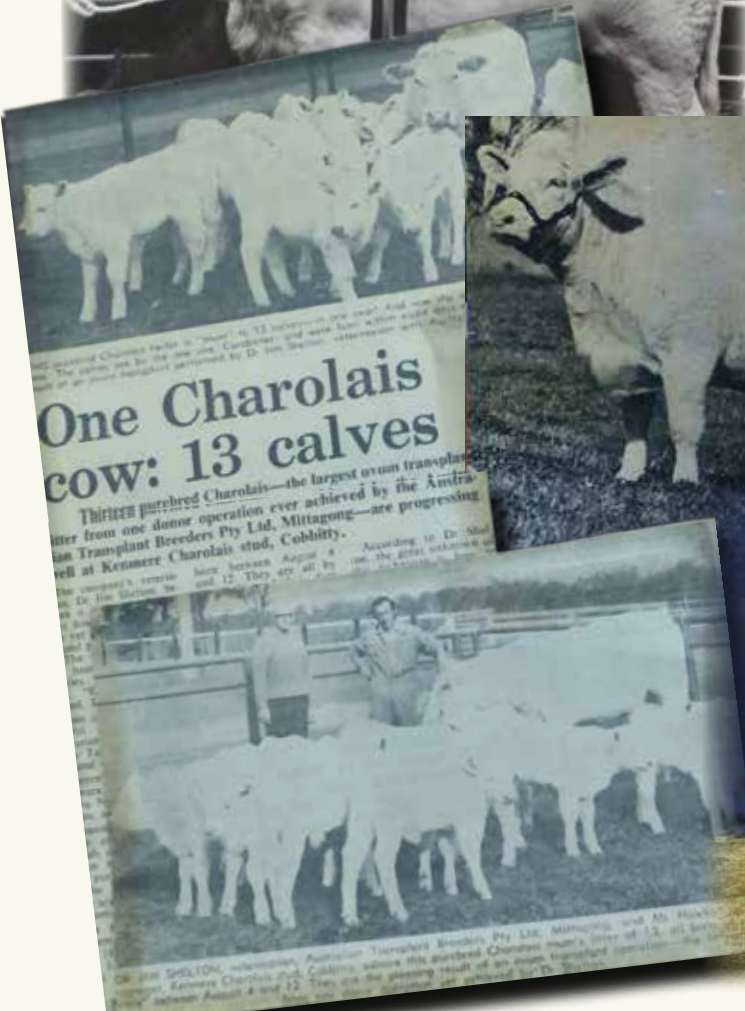
Register at www.auctionsplus.com.au

Kenmere History

Kenmere Charolais was established in the early 1970's with original French bloodlines imported via New Zealand to Australia. This provided a genetically sound base from which we could increase numbers and reproduce the quality traits that were associated with Charolais.

In 1988 John Collins changed the focus of the stud and in 2004 Matthew and Ann-Marie Collins purchased all the cattle and began the work of rebuilding the stud at Cobbitty. The Kenmere females we purchased back enabled us to breed heifers which would become the new foundation herd. We purchased quality heifers from leading studs and many of these had bloodlines that were originally Kenmere genetics.

Ann-Marie became very active in all aspects of the stud particularly in recommending using the Kenmere dams for embryo transfers. Kenmere Kristina III who was sired by Mandalong Chock and her dam was Gilmandyke Park Kristina II was the first cow to be flushed in the programme.



Gilmandyke Park Kristina II dam was Kenmere Kristina the first pure bred cow bred by Kenmere in New Zealand and transported to Australia . This effectively means we are breeding animals that take us back to pure bred Charolais blood where our breeding commenced .

Today the Kenmere stud is based at Holbrook in Southern NSW and under Ann-Marie's and Glenn Trout's management we specialise in breeding cattle that are moderate framed animals that suit the southern markets with low birth weight, calving ease and carry the top genetic trends for Rib, Rump and IMF.

In 2021 Kenmere is focused on breeding that include leading bulls in the Charolais world. Last year we purchased the semen rights for LT Badge 9184 a Charolais bull bred by Lindskov-Thiel that later sold the bull to Next Gen Cattle Co at the Lt Ranch 2020 sale for \$US105,000.

Lt Badge 9184 will be supported by Wright Charolais WC in the Zone 8913 whose semen has only just arrived in Australia in time for our autumn 2021 joinings . Kenmere intends to continue to introduce new genetics into our herd that gives us the confidence about the ongoing quality and diversity of our breeding stock.



Ann-Marie Collins



Matthew Collins



Kenmere Pompeii (P) sired by Kenmere Herichio



CHAROLAIS BREEDPLAN

January 2021 Charolais BREEDPLAN Breed Avg EBVs for 2019 Born Calves.
Percentile Range available at <http://breedplan.une.edu.au>

	CE DIR	CE DTR	GL	BW	200	400	600	MCW	MILK	SS
EBV	+1.5	+0.8	-2.8	+0.1	+12	+24	+32	+32	+7	+1.1

	CW	EMA	RIB	RUMP	RBV	IMF
EBV	+20	+1.6	+0.4	+0.5	+0.0	+0.2

\$ Index Values

Dom (\$)	Exp (\$)
+\$25	+\$35

All EBVs quoted in this catalogue are Charolais Group Breedplan EBVs and are directly comparable with the EBVs from other Charolais Group Breedplan herds.

EBVs

An animal's breeding value is its genetic merit, half of which will be passed on to its progeny. While we will never know the exact breeding value, for performance traits it is possible to make good estimates. These estimates are called Estimated Breeding Values (EBVs).

Accuracy

Accuracy (%) is based on the amount of performance information available on the animal and its close relatives - particularly the number of progeny analysed. Accuracy is also based on the heritability of the trait and the genetic correlations with other recorded traits. The higher the accuracy value the lower the likelihood of change in the animal's EBV as more information is analysed for that animal or its relatives.

TRAITS

Calving Ease EBVs (%) are based on calving difficulty scores, birth weights and gestation length information. More positive EBVs are favourable and indicate easier calving.

CE % Dir = Direct Calving Ease - The EBV for direct calving ease indicates the influence of the sire on calving ease in purebred females calving at two years of age.

CE % Daughters = Daughters' Calving Ease - The EBV for daughters' calving ease indicates how easily that sire's daughters will calve at two years of age.

Gestation Length EBV (days) is an estimate of the time from conception to the birth of the calf and is based on Artificial Insemination & hand mating records. Lower (negative) Gestation Length EBVs indicate shorter gestation length & therefore easier calving & increased growth after birth.

Birth Weight EBV (kg) is based on the measured birth weight of progeny, adjusted for dam age. The lower the value the lighter the calf at birth and the lower the likelihood of a difficult birth. This is particularly important when selecting sires for use over heifers.

200-Day Growth EBV (kg) is calculated from the weight of progeny taken between 80 and 300 days of age. Values are adjusted to 200 days and for age of dam. This EBV is the best single estimate of an animal's genetic merit for growth to early ages.

400-Day Weight EBV (kg) is calculated from the weight of progeny taken between 301 and 500 days of age, adjusted to 400 days and for age of dam. This EBV is the best single estimate of an animal's genetic merit for yearling weight.

600-Day Weight EBV (kg) is calculated from the weight of progeny taken between 501 and 900 days of age, adjusted to 600 days and for age of dam. This EBV is the best single estimate of an animal's genetic merit for growth beyond yearling age.

Mature Cow Weight EBV (kg) is based on the cow weight when the calf is weighed for weaning, adjusted to 5 years of age. This EBV is an estimate of the genetic difference in cow weight at 5 years of age and is an indicator of growth at later ages and potential feed maintenance requirements of the females in the breeding herd. Steer breeders wishing to grow animals out to a larger weight may also use the Mature Cow Weight EBV.

Milk EBV (kg) is an estimate of an animal's milking ability. For sires, this EBV indicates the effect of the daughter's milking ability, inherited from the sire, on the 200-day weights of her calves. For dams, it indicates her milking ability.

Scrotal Size EBV (cm) is calculated from the circumference of the scrotum taken between 300 and 700 days of age and adjusted to 400 days of age. This EBV is an estimate of an animal's genetic merit for scrotal size. There is also a small negative correlation with age of puberty in female progeny and therefore selection for increased scrotal size will result in reduced age at calving of female progeny.

Eye Muscle Area EBV (sq cm) is calculated from measurements from live animal ultrasound scans and from abattoir carcass data, adjusted to a standard 300 kg carcass. This EBV estimates genetic differences in eye muscle area at the 12/13th rib site of a 300 kg dressed carcass. More positive EBVs indicate better muscling on animals. Sires with relatively higher Eye Muscle Area EBVs are expected to produce better muscled and higher percentage yielding progeny at the same carcass weight than will sires with lower Eye Muscle Area EBVs.

Rib Fat and Rump Fat EBVs (mm) are calculated from measurements of subcutaneous fat depth at the 12/13 rib site and the P8 rump site (from live animal ultrasound scans and from abattoir carcasses) and are adjusted to a standard 300 kg carcass. These EBVs are indicators of the genetic differences in fat distribution on a standard 300 kg carcass. Sires with low, or negative, fat EBVs are expected to produce leaner progeny at any particular carcass weight than will sires with higher EBVs.

Retail Beef Yield EBV (%) indicates genetic differences between animals for retail yield percentage in a standard 300 kg carcass. Sires with larger EBVs are expected to produce progeny with higher yielding carcasses.





Intramuscular Fat EBV (%) is an estimate of the genetic difference in the percentage of intramuscular fat (marbling) at the 12/13th rib site in a 300 kg carcass. Depending on market targets, larger more positive values are generally more favourable.

Selection Indices

Charolais selection indices are calculated for market specifications, including Domestic and Export. Index values are reported as EBVs, in units of relative earning capacity (\$'s) for a given market. They reflect both the short-term profit generated by a sire through the sale of his progeny, and the longer-term profit generated by his daughters in a self-replacing cow herd. A selection index combines the EBVs with economic information (costs and returns) for specific market and production systems to rank animals based on relative profit values. More information is available on selecting animals using a selection index. The Index values are derived using BreedObject technology. More information is available from the BreedObject web site.

Domestic Index (\$) - Estimates the genetic differences between animals in net profitability per cow joined for an example commercial herd with a British cow base (eg Angus) targeting grass-finished production for the domestic trade. This Index assumes pasture grown & finished steers weighing 430 kg (240 kg HSCW and 6 mm P8 fat depth) at 12 months. Daughters are retained or sold for breeding therefore maternal traits are of importance. In response to industry feedback, positive emphasis has been placed on finishing ability.

Export Index (\$) - Estimates the genetic differences between animals in net profitability per cow joined for an example commercial herd with a British cow base (eg Angus) targeting the production of steers for export markets. This Index assumes pasture grown & finished steers weighing 700 kg (380 kg HSCW and 9 mm P8 fat depth) at 29 months. Daughters are retained or sold for breeding therefore maternal traits are of importance. In response to industry feedback, positive emphasis has been placed on finishing ability.



Poll Genetics

Poll Inheritance

Understanding the Horn/Poll status of a bull is important when determining whether a potential new bull meets your breeding objectives. A poll bull can be either 'true polled' (homozygous PP), or is a carrier of horned genetics (heterozygous Ph). The polled variant of the gene (P) is usually dominant to the horned variant of the gene (h), which means polled animals may be either PP or Ph. Homozygous PP animals will always pass a copy of the polled variant to their offspring, increasing the likelihood that the offspring will be polled. Identifying breeding animals that carry two copies of the polled variant will dramatically reduce the requirement for dehorning in subsequent generations. Kenmere have tested via DNA poll animals in this sale to determine their poll status.

Genotype	Status	Explanation
PP Homozygous Polled	Polled	This animal possesses two copies of the polled variant of the gene. This animal is highly likely to be polled and will always pass a poll variant to its progeny.
Ph Heterozygous Polled	Carrier	This animal carries one copy of the polled variant and one copy of the horned variant of the gene. This animal is likely to be polled but in some instances may be scurred or horned. This animal will transmit either the horned or polled variant to its progeny.
hh Homozygous Horned	Horned	This animal carries two copies of the horned variant of the gene. This animal is highly likely to be horned and will always transmit the horned variant to its progeny.

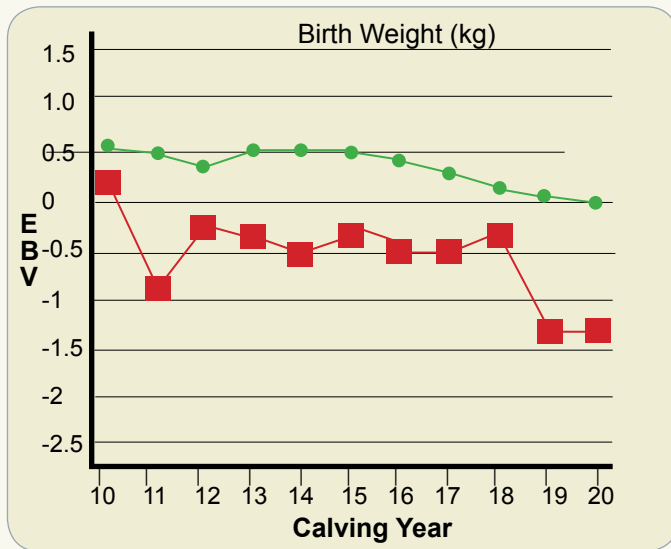
Is polled always dominant to horned?

In Bos taurus breeds, polled is almost always dominant to horned; -PP- animals are always polled and -Ph- animals are usually always polled (they are sometimes scurred). In Bos indicus influenced breeds, such as Brahman and Droughtmaster, this is not necessarily the case. Whilst -PP animals are usually always polled, -Ph- animals can be polled, scurred and sometimes horned. For example, an Angus bull bred to horned Brahman cows will produce offspring that all have a genotype of -Ph- but can be a mixture of polled, scurred and horned. Whilst the vast majority will be polled and scurred, some horned animals are usually observed due to the influence of other genes interacting with the poll gene.

Kenmere Sale Bulls

Homozygous Poll animals in this sale have been DNA tested at Neogen and their Poll Status is indicated where a test result is available.

KENMERE GENETIC TRENDS



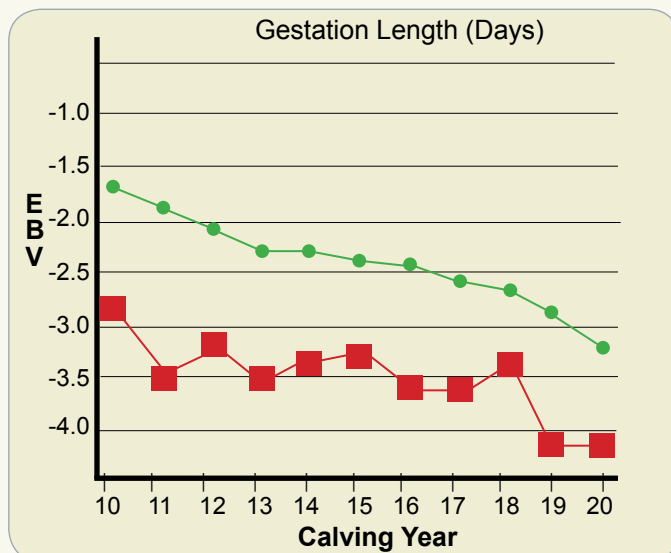
Kenmere Genetic Trends for calving traits

The real profit drivers for a profitable calf crop are live calves born early every year!

Birth Weight figures are expressed in kilograms and are calculated from the weights of the calves taken at birth and compared to the other calves in the group.

ALL KENMERE CALVES ARE WEIGHED AT BIRTH giving a great bank of actual data to start to build performance upon. With all bulls being sire verified we can be confident of the pedigree and how we can expect animal to perform and influence his progeny. Lower birth weight figures are generally more desirable.

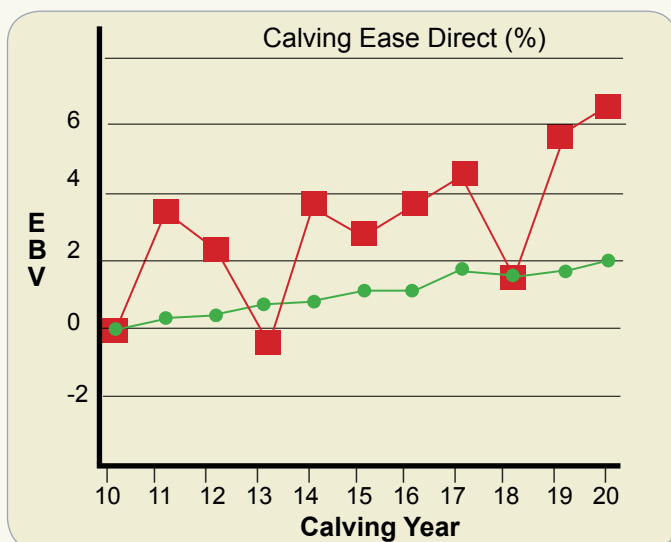
Gestation Length EBV's are an indicator of the days from conception to birth. This is important to allow cows longer to rebreed and calve on time year upon year as well as having an influence on lowering birth weight. The figure is calculated in days and a lower or lesser figure is more favourable.



Calving Ease Direct points to the calving ability of the sire's calves to be born unassisted. This means less stress on the cows, giving them a better opportunity to rebreed at the first opportunity. Higher figures are more favourable.

The other factor to keep in mind with reproductive traits, especially when mating maiden heifers is that there will be a trade off in performance when using sires with a really low birth weight figure. This is balanced by having live calves and the ability of Charolais genetics to drive weight gain, especially if you are cross breeding and getting the benefits of hybrid vigour – a win, win and a proven way to get high dollar returns.

As shown in the graphs, the Kenmere herd sits well above the breed average for Calving Ease, well below the breed average on Birth Weight and shorter than the breed average for Gestation Length.



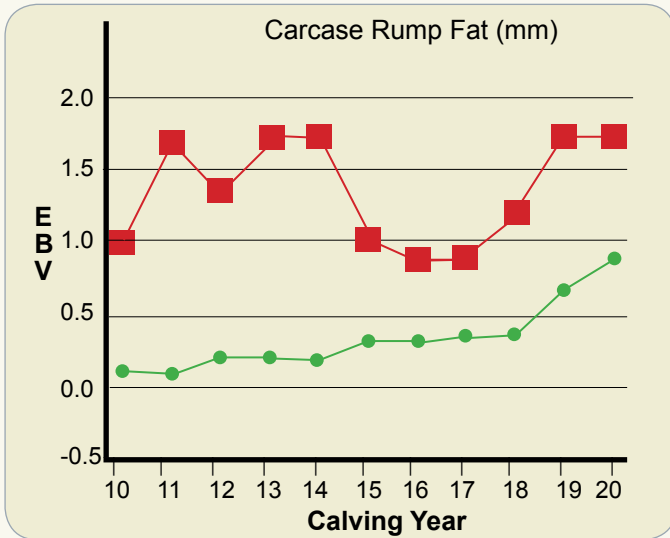
70% of the bulls in this catalogue rate in the top 20% of the breed for Birth weight, Gestation or Calving Ease Direct. The other 30% are bred for mature cow mating's based around carcase and performance traits.

It is not only the individual sire's effect but consistent, repeatable traits in the Kenmere herd as a whole.



Kenmere

Charolais Breed

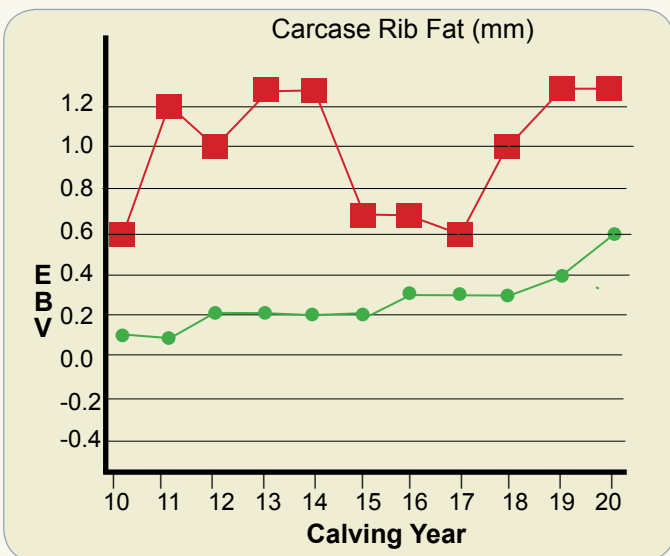


Kenmere Genetic Trends for Rib, Rump and IMF

The benefits of using Charolais genetics for growth and yield coupled with ability of Kenmere bulls to lay down fat and their marbling ability make for a very sound breeding strategy.

Higher Rib and Rump fat is not only beneficial when turning off lines of cattle to fit industry requirements but for females retained that can deal with testing seasonal conditions and maintain a healthy fat score to feed their offspring and rebreed in a short space of time. This is the key to profitable beef production.

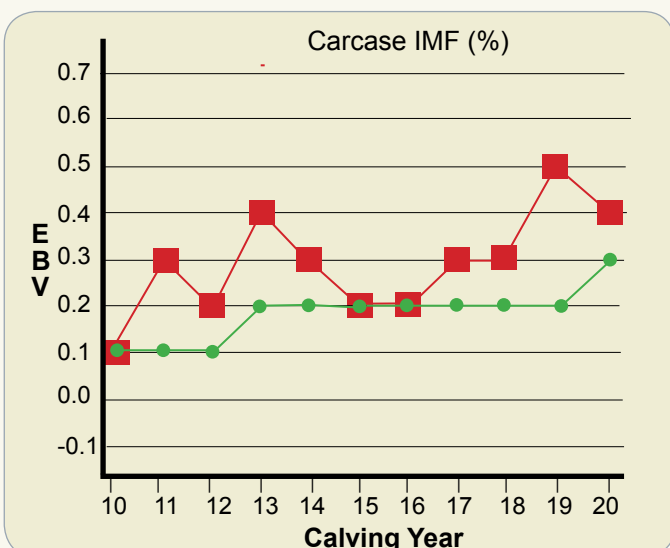
Although the sacrifice value of Charolais cross heifers is every bit as good as their male siblings, the real worth of these females is in their ability to function as highly profitable cows.



With 10 years of solid weighing and scanning data collated on the Kenmere herd of male and female progeny we can map progress of our genetics on traits not always seen by the eye and IMF is certainly one of these. Cattle that can turn grass into high weight gains and a high quality, saleable product has always been the goal for Kenmere Charolais.

Rib Fat EBVs are expressed in millimetres. They estimate the difference in the fat measurement over the rib between animals. The fat measurements that were sent to Breedplan on this set of bulls to produce these EBVs were taken in November 19, off pasture. We view a positive EBV figure to be an advantage as the progeny will be easier to finish.

Rump Fat EBVs are also expressed in millimetres. They estimate the difference in the fat measurement over the rump. Again, we view a positive EBV figure to be an advantage.



Intramuscular Fat (IMF) EBVs are estimates of genetic differences between animals in intramuscular fat (marbling) IMF EBVs are reported as differences in percentage (%) IMF. Higher IMF EBVs are more favourable and can contribute to carcass value. Sixty% of the bulls in this catalogue have Rib, Rump or IMF EBVs in the top 20% of the breed. The other bulls excel in Calving Ease or Muscularity (EMA & RBY)

As shown in the graphs the herd as a whole is built with carcass quality and fattening ability traits which makes for reliability and uniformity.



Kenmere Reference Sires



KENMERE CHOCK N20E (MCS N20E) (P)

Chock N20E is the son of Kenmere Chock E12E that we chose to retain in the stud. He exhibits his sire's length, softness and temperament but he has more performance, combined with a well laid in shoulder, good neck extension and plenty of depth. He has over 60 progeny in the herd and we are proud to offer the first of his progeny in this sale with lot 25 – A 16 month old bull with lots of potential. N20E has rib and rump fat EBV's in the top 1% of the breed.



KENMERE MAXIMUS (MCS M19E) (P)(R/F)

Maximus has been extensively used at Kenmere as our calving ease specialist with over 120 progeny. He reliably produces small, easy born calves with short gestation. He is a homo polled, moderate red factor son of LT Long Distance that is structurally sound and still working in the Stud. His calves have good performance and fat cover regardless of their small start. He has 15 sons in this sale.



KENMERE HERICHIO (MCS H103E) (P)

Herichio is a Kenmere Bred sire who is a trait leader for 400 day weight in the breed. The bull is long bodied with adequate softness. He was the reserve interbreed champion bull at Melbourne Royal Show during his career and the bull has bred progeny that have represented the stud successfully in 2019 and 2020. Herichio should breed meaty bulls with carcass quality that will suit a variety of markets.



LT LONG DISTANCE 9001 (OAU E143E) (P)

Long Distance is in top 1% for birth weight and calving ease direct, rib and rump fat, IMF, top 5% for Gestation length and top 10% for milk. Kenmere selected this North American Sire for his worldwide acclaim for calving ease and low birthweight. He has a proven reputation for shorter gestations and good calving ease. The structure of the bull and his confirmation selectively suited mating with Kenmere dams.



KENMERE SYNERGY'S MAN (MCS M40E) (P)

Synergy's Man was retained by Kenmere for stud duties following his show career where he won Junior and Grand Champion Bull at Melbourne Royal Show in 2017. This sire was selected for his rib, rump and milk traits. He is a moderate framed bull packed with even thickness throughout and plenty of muscle expression.



KENMERE LANZ (MCS L23E) (R/F) (P)

Lanz is a homo polled, red factor bull that was purchased by Elstow Charolais in the 2017 Kenmere Sale. He is a full brother to both Kenmere Garrison and Kenmere Grand Master. Grand Master was purchased by Temana Charolais and has over 160 progeny. His dam, Calamity has had a big influence on the Kenmere herd with 7 daughters currently in production. He is an exceptionally soft type of sire and is in the top 1% of the breed for Rib & Rump Fat.



VPI FREE LUNCH 708T (OAU C6773E) (P)

This international homozygous poll sire is a trait leader for Birth weight, 200, 400 and 600 day weight and scrotal size. Free Lunch has over one thousand progeny worldwide and has established a breeding reputation for siring heavily built easy doing bulls that grow consistently until full maturity.



PCC SUDDEN IMPACT 848U (OAC D1017E) (P)

Sudden Impact is an impressive polled Canadian sire with strong performance and carcass traits. The bull carries the softness that we look for in a sire and he is also a trait leader in Scrotal Size and Milk. He has three sons in this year's sale.

**HOMOZYGOUS
POLL - DNA**

1 KENMERE QUICK DRAW Q53E (P)

Tattoo: MCS Q53E Born: 29/04/2019

DBAR SYNERGY 721T (OAC C3100E) (P)
ASHWOOD PARK SYNERGY G29E (HAS G29E) (P)
ASHWOOD PARK ANGEL 2 (HAS D22E) (P)

SIRE: KENMERE SYNERGY'S MAN (MCS M40E) (P)

LT BLUEGRASS 4017P (OAU Z4017E) (P)
KENMERE PING E20E (MCS E20E) (P)
MINNIE-VALE PING A49E (SGS A49E) (P)

LT EASY BLEND 5125 PLD (OAU A5113E) (P)
KENMERE RADIATOR E90E (MCS E90E) (P)
MINNIE-VALE RADIANCE B34E (SGS B34E) (P)

DAM: KENMERE NAVARRO H64E (MCS H64E) (P)

ROSEDALE Y106E (MR Y106E) (P)
KENMERE NAVARRO B14E (MCS B14E)
KENMERE NAVARRO (MCS N35D)

Comments: Homo Polled. Quick Draw was the calf at foot when his dam, Navarro won Senior Champion Female at Melbourne Royal. A great combination of his dams' length & stretch with his sire's power & depth of body. EBV Percentiles: 10% IMF, 15% Rump Fat, 20% Milk, Calving Ease Daughters.

	CE DIR	CE DTR	GL	BW	200	400	600	MCW	MILK	SS
EBV	-22.4	+4.8	-2.0	+2.5	+14	+29	+36	+43	+10	+1.4
Acc	47%	40%	50%	71%	66%	68%	70%	63%	49%	75%

	CW	EMA	RIB	RUMP	RBV	IMF
EBV	+19	+1.3	+0.9	+1.5	-0.3	+0.6
Acc	59%	52%	57%	56%	55%	51%

\$ Index Values

Dom (\$) Exp (\$)

-\$10 -\$15



Purchaser: _____

\$: _____

**HOMOZYGOUS
POLL - DNA**

2 KENMERE QUALITY CONTROL Q41E (P)

Tattoo: MCS Q41E Born: 22/04/2019

DBAR SYNERGY 721T (OAC C3100E) (P)
ASHWOOD PARK SYNERGY G29E (HAS G29E) (P)
ASHWOOD PARK ANGEL 2 (HAS D22E) (P)

SIRE: KENMERE SYNERGY'S MAN (MCS M40E) (P)

LT BLUEGRASS 4017P (OAU Z4017E) (P)
KENMERE PING E20E (MCS E20E) (P)
MINNIE-VALE PING A49E (SGS A49E) (P)

NANDILLYAN PEUGEOT (F U1E) (P)
KENMERE GRAND MASTER (MCS G6E) (P)
KENMERE CALAMITY C56E (MCS C56E) (P)

DAM: KENMERE BLISSFUL J44E (MCS J44E) (P)

LT EASY BLEND 5125 PLD (OAU A5113E) (P)
KENMERE BLISSFUL (MCS E18E) (P)
ROSEDALE BLISSFUL B178 (MR B178E) (P)

Comments: Homo Polled. Quality Control exhibits softness, length, a large scrotal, great sheath set up & a smooth muscle pattern. A performance bull that would make an excellent cow breeder or breed heavy steers. EBV Percentiles: 1% Rib & Rump Fat, 5% IMF, 10% Milk, Scrotal.

	CE DIR	CE DTR	GL	BW	200	400	600	MCW	MILK	SS
EBV	-10.1	-3.4	-2.6	-0.1	+8	+14	+19	+7	+12	+1.9
Acc	49%	40%	52%	74%	67%	69%	71%	64%	49%	75%

	CW	EMA	RIB	RUMP	RBV	IMF
EBV	+12	+1.9	+2.5	+3.6	-1.0	+0.9
Acc	60%	52%	57%	56%	55%	51%

\$ Index Values

Dom (\$) Exp (\$)

+\$8 +\$13



Purchaser: _____

\$: _____

3 KENMERE QUATTRO Q108E (P)

Tattoo: MCS Q108E Born: 16/05/2019

AMBERLEY CAIN (ACH C6E) (P)
BRANCH VIEW GOMEZ (BVC G11E) (P)
BRANCH VIEW VENESSA A11E (BVC A11E) (P)

SIRE: ELSTOW LIGHTFINGERS (BMM L85E) (P)

ELSTOW BUNDY (BMM B29E) (P)
ELSTOW CUTE H161 (BMM H161E) (P)
ELSTOW CUTE E15E (BMM E15E) (P)

2UP PEUGEOT (2UP P46E) (P)
NANDILLYAN PEUGEOT (F U1E) (P)
ROSEDALE WALLAH Q69 (MR Q69E+95) (P)

DAM: KENMERE CALAMITY L26E (MCS L26E) (P)

ROSEDALE Y106E (MR Y106E) (P)
KENMERE CALAMITY C56E (MCS C56E) (P)
MINNIE-VALE PING A49E (SGS A49E) (P)

Comments: Homo Polled. Quattro has been lightly used over heifers at Kenmere. He is a really soft made bull with a magic profile and depth of flank. EBV Percentiles: 1% Rib & Rump Fat, 5% Birth Wt, IMF, 10% Domestic & Export Indexes, Calving Ease Direct, 15% Milk.

	CE DIR	CE DTR	GL	BW	200	400	600	MCW	MILK	SS
EBV	+11.0	+3.5	-3.3	-2.8	+6	+15	+16	+14	+11	-0.2
Acc	40%	32%	43%	71%	64%	67%	70%	61%	39%	74%

	CW	EMA	RIB	RUMP	RBV	IMF
EBV	+14	+1.0	+3.0	+4.1	-2.1	+1.0
Acc	57%	46%	52%	51%	50%	45%

\$ Index Values

Dom (\$)	Exp (\$)
+\$49	+\$65



Purchaser:

\$:

4 KENMERE QUICK PITCH Q13E (AI) (ET) (P/S)

Tattoo: MCS Q13E Born: 11/04/2019

LT SILVER DISTANCE 5342 (OAU A7559E) (P)
LT LONG DISTANCE 9001 (OAU E143E) (P)
LT BELLE 7026 (OAU C9133E) (P)

SIRE: KENMERE MAXIMUS (MCS M19E) (P)

KENMERE GRAND MASTER (MCS G6E) (P)
KENMERE NICOLA J46E (MCS J46E) (P)
KENMERE NICOLA F73E (MCS F73E) (P)

LT ASSERTION 1277 (PED W1277F) (P)
LT BLUEGRASS 4017P (OAU Z4017E) (P)
LT PEARLS BREEZE 2236 (PED X2236F) (P)

DAM: KENMERE KRISTINA E16E (MCS E16E) (P)

MANDALONG CHOCK (RP C59E) (P/S)
KENMERE KRISTINA III FL87 (MCS M18E)
GILMANDYKE PARK KRISTINA 2ND (AGP N17F)

Comments: Quick Pitch is an easy calving, long, strong topped, quiet bull that is a great allrounder. His dam is a full sister to Kenmere Chock that has bred so well. He has the top value for calving ease in the breed for 2019 born bulls. EBV Percentiles: 1% Calving Ease Direct, Birth Wt, 5% Gestation Length, IMF, 10% Domestic & Export Indexes, 15% Calving Ease Daughters, 20% Milk.

	CE DIR	CE DTR	GL	BW	200	400	600	MCW	MILK	SS
EBV	+23.9	+5.4	-6.0	-4.9	+11	+9	+18	+9	+11	-0.9
Acc	52%	44%	57%	74%	68%	69%	72%	65%	51%	75%

	CW	EMA	RIB	RUMP	RBV	IMF
EBV	+14	+0.8	+0.7	+0.9	-1.0	+0.9
Acc	61%	54%	58%	57%	56%	53%

\$ Index Values

Dom (\$)	Exp (\$)
+\$48	+\$67



Purchaser:

\$:

5 KENMERE QUICK LIGHT Q116E (AI) (ET) (P/S)

Tattoo: MCS Q116E Born: 22/05/2019

LT EASY BLEND 5125 PLD (OAU A5113E) (P)
 KENMERE RADIATOR E90E (MCS E90E) (P)
 MINNIE-VALE RADIANCE B34E (SGS B34E) (P)

SIRE: KENMERE HERICHIO (MCS H103E) (P)

LT WESTERN SPUR 2061 PLD (OAU X2061E) (P)
 KENMERE DIAMOND SPUR D8E (MCS D8E) (P)
 MINNIE-VALE QUEENIE A68E (SGS A68E) (P)

LT ASSERTION 1277 (PED W1277F) (P)
 LT BLUEGRASS 4017P (OAU Z4017E) (P)
 LT PEARLS BREEZE 2236 (PED X2236F) (P)

DAM: KENMERE TINKERBELLE E48E (MCS E48E) (P)

SUMMER KOSCIOSKO (SU K78F)
 KENMERE TINKERBELLE (KNC T60E)
 SUMMER KISS'N'TELL (SU K1E)

Comments: Quick Light is an excellent vealer or steer producer. He is a striking, long, quiet bull with a strong top, in a moderate package. EBV Percentiles: 10% Scrotal, 15% Gestation, Rump Fat, 20% Rib Fat, IMF.

	CE DIR	CE DTR	GL	BW	200	400	600	MCW	MILK	SS
EBV	-0.1	+0.3	-4.4	-0.5	+7	+18	+24	+13	+3	+2.1
Acc	47%	45%	48%	72%	65%	67%	71%	65%	52%	74%

	CW	EMA	RIB	RUMP	RBV	IMF
EBV	+14	+1.1	+1.0	+1.6	-0.7	+0.5
Acc	59%	51%	55%	54%	54%	50%

\$ Index Values	
Dom (\$)	Exp (\$)
+\$24	+\$35



Purchaser:

\$:

6 KENMERE QUICKSTOP Q115E (P/S)

Tattoo: MCS Q115E Born: 21/05/2019

DBAR SYNERGY 721T (OAC C3100E) (P)
 ASHWOOD PARK SYNERGY G29E (HAS G29E) (P)
 ASHWOOD PARK ANGEL 2 (HAS D22E) (P)

SIRE: KENMERE SYNERGY'S MAN (MCS M40E) (P)

LT BLUEGRASS 4017P (OAU Z4017E) (P)
 KENMERE PING E20E (MCS E20E) (P)
 MINNIE-VALE PING A49E (SGS A49E) (P)

LT WESTERN SPUR 2061 PLD (OAU X2061E) (P)
 KENMERE DAKOTA SPUR D9E (MCS D9E)
 KARINA INVESTMENTS WINDY WENDY (GPK A15E) (P)

DAM: KENMERE JOY (MCS J2E) (P)

LT EASY BLEND 5125 PLD (OAU A5113E) (P)
 KENMERE EBONY (MCS E11E) (P)
 CALOONA PARK A0070 (LSF A70E) (P/S)

Comments: Quickstop would make a great vealer bull! He is moderate with a huge top and back end. He is a powerhouse like his sire. Quickstops' dam Kenmere Joy bred Kenmere Matlock who sold to Palgrove Charolais Stud at 2018 sale. EBV Percentiles: 20% Rump Fat, 25% 600 Day Wt, Rib Fat.

	CE DIR	CE DTR	GL	BW	200	400	600	MCW	MILK	SS
EBV	-14.4	-1.6	-2.7	+1.7	+14	+22	+39	+31	+8	+0.5
Acc	48%	41%	51%	72%	66%	68%	71%	62%	48%	75%

	CW	EMA	RIB	RUMP	RBV	IMF
EBV	+20	+1.1	+0.7	+1.0	+0.2	+0.0
Acc	59%	52%	56%	55%	54%	51%

\$ Index Values	
Dom (\$)	Exp (\$)
-\$7	-\$5



Purchaser:

\$:

7 KENMERE QUIZ MASTER Q117E (P/S)

Tattoo: MCS Q117E Born: 22/05/2019

DBAR SYNERGY 721T (OAC C3100E) (P)
 ASHWOOD PARK SYNERGY G29E (HAS G29E) (P)
 ASHWOOD PARK ANGEL 2 (HAS D22E) (P)

SIRE: KENMERE SYNERGY'S MAN (MCS M40E) (P)

LT BLUEGRASS 4017P (OAU Z4017E) (P)
 KENMERE PING E20E (MCS E20E) (P)
 MINNIE-VALE PING A49E (SGS A49E) (P)

LHD MR RULER D310 (PED -5954E)
 MD SENTINAL RULER G1520 (OAU S9416E) (P/S)
 MD MS SENTINELJON B389 (PED -9947E)

DAM: KENMERE TINKERBELLE J28E (MCS J28E) (P)

LT EASY BLEND 5125 PLD (OAU A5113E) (P)
 KENMERE TINKERBELLE E53E (MCS E53E) (P)
 KENMERE TINKERBELLE (KNC T60E)

Comments: Quiz Master is another powerhouse by Synergy's Man. He exhibits a soft muscle pattern, good shoulder set up, strong top and plenty of depth. His dam Kenmere Tinkerbelle J28E EBV for mature cow weight is in top 5 % of the breed. He would make a great vealer bull! EBV Percentiles: 15% Milk, 20% Rump Fat.

	CE DIR	CE DTR	GL	BW	200	400	600	MCW	MILK	SS
EBV	-18.8	-5.6	+0.0	+2.3	+10	+23	+20	+31	+11	+0.2
Acc	47%	39%	55%	72%	66%	68%	71%	64%	48%	74%

	CW	EMA	RIB	RUMP	RBY	IMF
EBV	+14	+1.1	+0.7	+1.2	+0.0	+0.3
Acc	60%	51%	57%	56%	54%	50%

\$ Index Values

Dom (\$) Exp (\$)

-\$15 -\$28



Purchaser:

\$:

8 KENMERE QUANTUM LEAP Q91E (AI) (ET) (P) (R/F)

Tattoo: MCS Q91E Born: 10/05/2019

2UP PEUGEOT (2UP P46E) (P)
 NANDILLYAN PEUGEOT (F U1E) (P)
 ROSEDALE WALLAH Q69 (MR Q69E+95) (P)

SIRE: KENMERE GARRISON (MCS G9E) (P)

ROSEDALE Y106E (MR Y106E) (P)
 KENMERE CALAMITY C56E (MCS C56E) (P)
 MINNIE-VALE PING A49E (SGS A49E) (P)

PALGROVE SUPADOOPA (PK S63E) (P)
 PLATINUM ULTRA (AJ1 U37E) (P)
 PLATINUM QUALITY 2ND (AJ1 S2E)

DAM: KARINA INVESTMENTS PRIMROSE 2 (GPK A4E) (P)

WCR PRIME CUT 764 PLD (OAC S764E) (P)
 KARINA INVESTMENTS PRIMROSE (GPK X2E)
 2UP LEMONADE (2UP L138D)

Comments: Quantum Leap is a really well put together, powerful red factor sire with plenty of performance. EBV Percentiles: 10% Rump Fat, IMF, 15% Milk, Rib Fat, 20% Gestation, Scrotal.

	CE DIR	CE DTR	GL	BW	200	400	600	MCW	MILK	SS
EBV	+5.0	-24.3	-4.0	-0.1	+9	+18	+22	+20	+11	+1.6
Acc	48%	46%	56%	72%	65%	67%	70%	63%	53%	75%

	CW	EMA	RIB	RUMP	RBY	IMF
EBV	+9	+1.4	+1.3	+1.9	-0.7	+0.6
Acc	59%	51%	54%	54%	53%	50%

\$ Index Values

Dom (\$) Exp (\$)

+\$9 +\$11



Purchaser:

\$:

9 KENMERE QUIXOTE Q76E (AI) (P/S)

Tattoo: MCS Q76E Born: 05/05/2019

LT ASSERTION 1277 (PED W1277F) (P)
 LT BLUEGRASS 4017P (OAU Z4017E) (P)
 LT PEARLS BREEZE 2236 (PED X2236F) (P)

SIRE: KENMERE CHOCK E12E (MCS E12E) (P)

MANDALONG CHOCK (RP C59E) (P/S)
 KENMERE KRISTINA III FL87 (MCS M18E)
 GILMANDYKE PARK KRISTINA 2ND (AGP N17F)

PINAY (OAF U4134F)
 KENMERE PINAY J57E (MCS J57E) (P)
 KENMERE GOLDEN SPUR (MCS G3E) (P)

DAM: KENMERE CALAMITY M39E (MCS M39E) (P)

KENMERE RADIATOR E90E (MCS E90E) (P)
 KENMERE CALAMITY K14E (MCS K14E) (P)
 KENMERE CALAMITY C56E (MCS C56E) (P)

Comments: Quixote would make an ideal vealer bull. He is soft and deep with plenty of length. A proven pedigree from both sides and he is the only Chock son in the sale! EBV Percentiles: 1% Calving Ease Direct, 5% Birth Wt, Domestic & Export Indexes, 10% Calving Ease Daughters, Gestation, Milk, Rib Fat, 15% Rump Fat, 20% IMF, Northern Index.

	CE DIR	CE DTR	GL	BW	200	400	600	MCW	MILK	SS
EBV	+18.5	+6.9	-5.5	-3.2	+8	+13	+19	+18	+12	+1.2
Acc	51%	49%	53%	74%	67%	69%	72%	67%	55%	75%

	CW	EMA	RIB	RUMP	RBV	IMF
EBV	+15	+0.8	+1.3	+1.6	-1.4	+0.5
Acc	61%	53%	57%	56%	55%	53%

\$ Index Values

Dom (\$) Exp (\$)

+\$51 +\$71



Purchaser:

\$:

10 KENMERE QUESTIONNAIRE Q93E (P)

Tattoo: MCS Q93E Born: 11/05/2019

DBAR SYNERGY 721T (OAC C3100E) (P)
 ASHWOOD PARK SYNERGY G29E (HAS G29E) (P)
 ASHWOOD PARK ANGEL 2 (HAS D22E) (P)

SIRE: KENMERE SYNERGY'S MAN (MCS M40E) (P)

LT BLUEGRASS 4017P (OAU Z4017E) (P)
 KENMERE PING E20E (MCS E20E) (P)
 MINNIE-VALE PING A49E (SGS A49E) (P)

NANDILLYAN PEUGEOT (F U1E) (P)
 KENMERE GARRISON (MCS G9E) (P)
 KENMERE CALAMITY C56E (MCS C56E) (P)

DAM: KENMERE PERLINA J12E (MCS J12E) (P)

KENMERE DAKOTA SPUR D9E (MCS D9E)
 KENMERE PERLINA F37E (MCS F37E)
 KENMERE PERLINA (MCS P78E)

Comments: Homo Polled. Questionnaire will add length and stretch to his progeny. He is a taller type of bull with a strong top line. EBV Percentiles: 5% Rib & Rump Fat, 20% IMF.

	CE DIR	CE DTR	GL	BW	200	400	600	MCW	MILK	SS
EBV	-8.2	-4.1	-3.9	-0.5	+2	+0	-8	-18	+9	+0.4
Acc	47%	39%	52%	74%	66%	69%	72%	64%	48%	75%

	CW	EMA	RIB	RUMP	RBV	IMF
EBV	-4	+0.6	+2.2	+2.9	-1.3	+0.5
Acc	60%	51%	57%	56%	55%	50%

\$ Index Values

Dom (\$) Exp (\$)

-\$8 -\$17



Purchaser:

\$:

HOMOZYGOUS
POLL - DNA

11 KENMERE QUASIMODO Q98E (AI) (ET) (P/S)

Tattoo: MCS Q98E Born: 12/05/2019

LT EASY BLEND 5125 PLD (OAU A5113E) (P)
 KENMERE RADIATOR E90E (MCS E90E) (P)
 MINNIE-VALE RADIANCE B34E (SGS B34E) (P)

SIRE: KENMERE HERICHIO (MCS H103E) (P)

LT WESTERN SPUR 2061 PLD (OAU X2061E) (P)
 KENMERE DIAMOND SPUR D8E (MCS D8E) (P)
 MINNIE-VALE QUEENIE A68E (SGS A68E) (P)

ROSEDALE SELECTOR (MR S39E) (P)
 ROSEDALE Y106E (MR Y106E) (P)

DAM: KENMERE TOURMALINE C9E (MCS C9E) (P)

SUMMER KOSCOSKO (SU K78F)
 KENMERE TOURMALINE (KNC T48E) (P)
 BALLENGARA SHERBET II (CJP K54E) (P)

Comments: Quasimodo would make a great female breeder. He has sound feet, a fine hide and plenty of stretch. EBV Percentiles: 10% Milk, 25% Retail Beef Yield.

	CE DIR	CE DTR	GL	BW	200	400	600	MCW	MILK	SS
EBV	-15.9	-1.7	-1.2	+2.4	+5	+22	+34	+28	+10	+0.8
Acc	45%	42%	45%	72%	64%	66%	70%	62%	51%	73%

	CW	EMA	RIB	RUMP	RBY	IMF
EBV	+17	+0.8	-0.9	-1.0	+0.6	-0.1
Acc	57%	49%	53%	52%	52%	48%

\$ Index Values	
Dom (\$)	Exp (\$)
-\$16	-\$22



Purchaser:

\$:

12 KENMERE QUICK MONEY Q110E (AI) (ET) (P)

Tattoo: MCS Q110E Born: 17/05/2019

LT EASY BLEND 5125 PLD (OAU A5113E) (P)
 KENMERE RADIATOR E90E (MCS E90E) (P)
 MINNIE-VALE RADIANCE B34E (SGS B34E) (P)

SIRE: KENMERE HERICHIO (MCS H103E) (P)

LT WESTERN SPUR 2061 PLD (OAU X2061E) (P)
 KENMERE DIAMOND SPUR D8E (MCS D8E) (P)
 MINNIE-VALE QUEENIE A68E (SGS A68E) (P)

ROSEDALE SELECTOR (MR S39E) (P)
 ROSEDALE Y106E (MR Y106E) (P)
 ROSEDALE GAIETY R40 (MR R40E) (P)

DAM: KENMERE TOURMALINE C9E (MCS C9E) (P)

SUMMER KOSCOSKO (SU K78F)
 KENMERE TOURMALINE (KNC T48E) (P)
 BALLENGARA SHERBET II (CJP K54E) (P)

Comments: Quick Money is a clean polled full brother to Q98E. He is more moderate than his brother but they both have good scrotals and great weight for age. EBV Percentiles: 20% 600 Day Wt, Milk.

	CE DIR	CE DTR	GL	BW	200	400	600	MCW	MILK	SS
EBV	-9.0	+0.1	-1.6	+2.0	+7	+22	+43	+36	+10	+1.0
Acc	45%	42%	45%	72%	64%	66%	70%	62%	51%	73%

	CW	EMA	RIB	RUMP	RBY	IMF
EBV	+19	+0.3	-0.8	-1.0	+0.3	+0.1
Acc	57%	49%	53%	52%	52%	48%

\$ Index Values	
Dom (\$)	Exp (\$)
-\$2	+\$4



Purchaser:

\$:

13 KENMERE QUICKLY Q119E (P/S)

Tattoo: MCS Q119E Born: 23/05/2019

LT SILVER DISTANCE 5342 (OAU A7559E) (P)
 LT LONG DISTANCE 9001 (OAU E143E) (P)
 LT BELLE 7026 (OAU C9133E) (P)

SIRE: KENMERE MAXIMUS (MCS M19E) (P)

KENMERE GRAND MASTER (MCS G6E) (P)
 KENMERE NICOLA J46E (MCS J46E) (P)
 KENMERE NICOLA F73E (MCS F73E) (P)

LT BLUEGRASS 4017P (OAU Z4017E) (P)
 KENMERE CHOCK E12E (MCS E12E) (P)
 KENMERE KRISTINA III FL87 (MCS M18E)

DAM: KENMERE LOTTE (MCS L6E) (P)

ASHWOOD PARK BACARDI (HAS B10E) (P)
 ASHWOOD PARK HONOLULU (HAS H49E) (P)
 ASHWOOD PARK DEAR SOPHIE (HAS D84E) (P)

Comments: Quickly is by our calving specialist 'Maximus'. He has great depth of rib, a neat sheath and good weight for age. A good allrounder! EBV Percentiles: 1% Calving Ease Direct, 5% IMF, 15% Gestation, Birth Wt, Rib Fat & All Indexes, 20% 200Day Wt, Rump Fat.

	CE DIR	CE DTR	GL	BW	200	400	600	MCW	MILK	SS
EBV	+18.0	-3.4	-4.7	-1.4	+16	+21	+32	+32	+9	-0.8
Acc	48%	39%	53%	73%	67%	69%	71%	64%	47%	75%

	CW	EMA	RIB	RUMP	RBV	IMF
EBV	+14	+0.2	+1.2	+1.3	-1.5	+0.9
Acc	59%	50%	55%	54%	53%	50%

\$ Index Values

Dom (\$)	Exp (\$)
+\$40	+\$56



Purchaser:

\$:

14 KENMERE QUARTERMASTER Q128E (AI) (P)

Tattoo: MCS Q128E Born: 29/07/2019

WCR PRIME CUT 764 PLD (OAC S764E) (P)
 LT RIO BLANCO 1234 P (OAU W591E) (P)
 LT PRAIRIE MAID 4054 (PED -4694E)

SIRE: VPI FREE LUNCH 708T (OAU C6773E) (P)

WCR PRIME CUT 764 PLD (OAC S764E) (P)
 VPI MISS DUCHESS 404 P (PED -5358E) (P)
 VCR MISS DUCHESS 703 PLD (PED -2463E) (P)

LT WESTERN SPUR 2061 PLD (OAU X2061E) (P)
 KENMERE GILMAN KRISTO D17E E (MCS D17E)
 KENMERE KRISTINA III FL87 (MCS M18E)

DAM: KENMERE BLISSFUL M16E (MCS M16E)

KENMERE GRAND MASTER (MCS G6E) (P)
 KENMERE BLISSFUL J44E (MCS J44E) (P)
 KENMERE BLISSFUL (MCS E18E) (P)

Comments: Homo Polled. Quartermaster would make a great Stud Sire for heifers. He is stout and soft with a big scrotal and a sires' head. Free Lunch has been a consistent breeder at Kenmere combined with one of our best cow families. EBV Percentiles: 1% Calving Ease Direct, Birth Wt, Domestic Index, 5% Calving Ease Daughters, Gestation, IMF, Export Index, 10% Scrotal, Rib & Rump Fat.

	CE DIR	CE DTR	GL	BW	200	400	600	MCW	MILK	SS
EBV	+20.5	+8.0	-6.4	-6.3	+7	+14	+8	-1	+9	+2.0
Acc	49%	43%	74%	71%	66%	68%	66%	63%	53%	75%

	CW	EMA	RIB	RUMP	RBV	IMF
EBV	+13	-0.7	+1.4	+2.3	-2.1	+0.9
Acc	58%	52%	56%	55%	54%	51%

\$ Index Values

Dom (\$)	Exp (\$)
+\$63	+\$84



Purchaser:

\$:

HOMOZYGOUS POLL - DNA

15 KENMERE QUARTERLIGHT Q129E (P/S)

Tattoo: MCS Q129E Born: 29/07/2019

LT SILVER DISTANCE 5342 (OAU A7559E) (P)
 LT LONG DISTANCE 9001 (OAU E143E) (P)
 LT BELLE 7026 (OAU C9133E) (P)

SIRE: KENMERE MAXIMUS (MCS M19E) (P)

KENMERE GRAND MASTER (MCS G6E) (P)
 KENMERE NICOLA J46E (MCS J46E) (P)
 KENMERE NICOLA F73E (MCS F73E) (P)

LT BLUEGRASS 4017P (OAU Z4017E) (P)
 KENMERE CHOCK E12E (MCS E12E) (P)
 KENMERE KRISTINA III FL87 (MCS M18E)

DAM: KENMERE LOLLIEPOP (MCS L56E)

LT EASY BLEND 5125 PLD (OAU A5113E) (P)
 KENMERE EMILY (MCS E120E) (P)
 ROSEDALE EMILY Z207 (MR Z207E) (P)

Comments: Quarterlight is another sound, easy calving bull by Maximus. He carries plenty of grunt packed onto a moderate frame. EBV Percentiles: 1% Calving Ease Direct, Birth Wt, 10% Gestation, Export Index, 15% Rib & Rump Fat, Domestic Index, 20% IMF.

	CE DIR	CE DTR	GL	BW	200	400	600	MCW	MILK	SS
EBV	+21.9	+2.8	-5.6	-5.2	+5	+3	+11	-18	+9	+0.7
Acc	48%	39%	54%	72%	66%	68%	66%	62%	46%	75%

	CW	EMA	RIB	RUMP	RBY	IMF
EBV	+8	-0.1	+1.1	+1.6	-1.7	+0.8
Acc	58%	51%	55%	54%	53%	51%

\$ Index Values

Dom (\$)	Exp (\$)
+\$42	+\$62



Purchaser:

\$:

16 KENMERE QUICK HITCH Q183E (P) (TW)

Tattoo: MCS Q183E Born: 22/08/2019

LT SILVER DISTANCE 5342 (OAU A7559E) (P)
 LT LONG DISTANCE 9001 (OAU E143E) (P)
 LT BELLE 7026 (OAU C9133E) (P)

SIRE: KENMERE MAXIMUS (MCS M19E) (P)

KENMERE GRAND MASTER (MCS G6E) (P)
 KENMERE NICOLA J46E (MCS J46E) (P)
 KENMERE NICOLA F73E (MCS F73E) (P)

LT BLUEGRASS 4017P (OAU Z4017E) (P)
 KENMERE CHOCK E12E (MCS E12E) (P)
 KENMERE KRISTINA III FL87 (MCS M18E)

DAM: KENMERE MICHELLE H101E (MCS H101E) (P)

ROSEDALE Y106E (MR Y106E) (P)
 KENMERE MICHELLE MCS D20E (MCS D20E) (P)
 MINNIE-VALE MICHELLE B28E (SGS B28E) (P)

Comments: Homo Polled. Quick Hitch is an impressive, eye catching low birth weight Maximus son that exhibits plenty of power. He gets some extra thickness from his dams' side and would make a great vealer bull. EBV Percentiles: 1% Calving Ease Direct, 5% Birth Wt, Domestic & Export Index, 10% Gestation, Milk, Northern Index, 15% Calving Ease Daughters, Rib & Rump Fat, IMF.

	CE DIR	CE DTR	GL	BW	200	400	600	MCW	MILK	SS
EBV	+19.1	+5.6	-5.1	-3.3	+10	+16	+26	+18	+13	+0.8
Acc	49%	39%	52%	73%	67%	68%	66%	63%	49%	75%

	CW	EMA	RIB	RUMP	RBY	IMF
EBV	+16	+0.4	+1.3	+1.6	-1.4	+0.6
Acc	58%	52%	57%	56%	55%	52%

\$ Index Values

Dom (\$)	Exp (\$)
+\$52	+\$74



Purchaser:

\$:

**HOMOZYGOUS
POLL - DNA**

17 KENMERE QUICK ZIP Q230E (AI) (P/S) (R/F)

Tattoo: MCS Q230E Born: 27/10/2019

ZUP PEUGEOT (2UP P46E) (P)
 NANDILLYAN PEUGEOT (F U1E) (P)
 ROSEDALE WALLAH Q69 (MR Q69E+95) (P)

SIRE: KENMERE GARRISON (MCS G9E) (P)

ROSEDALE Y106E (MR Y106E) (P)
 KENMERE CALAMITY C56E (MCS C56E) (P)
 MINNIE-VALE PING A49E (SGS A49E) (P)

PCC SUDDEN IMPACT 848U (OAC D1017E) (P)
 ROSEDALE KOOLY (MR K16E) (P)
 ROSEDALE GOLDEN GIRL A34 (MR A34E) (P)

DAM: KENMERE BLISSFUL N83E (MCS N83E) (P)

GOBONGO BOY G196E (GO G196E) (P)
 KENMERE RADIANCE J79E (MCS J79E) (P)
 KENMERE RADIANCE G14E (MCS G14E) (P)

Comments: Quick Zip is a good, thick, stout bull with a deep flank and plenty of milk in his pedigree for those wanting to retain females. EBV Percentiles: 5% Milk, 10% Rib & Rump Fat, 15% Gestation, IMF, 20% Northern Index.

	CE DIR	CE DTR	GL	BW	200	400	600	MCW	MILK	SS
EBV	+2.8	-2.5	-4.7	+0.1	+13	+28	+38	+22	+15	+1.0
Acc	42%	37%	69%	70%	62%	64%	62%	60%	44%	73%

	CW	EMA	RIB	RUMP	RBV	IMF
EBV	+22	+2.0	+1.6	+1.9	-0.6	+0.6
Acc	54%	48%	53%	52%	51%	47%

\$ Index Values	
Dom (\$)	Exp (\$)
+\$31	+\$40



Purchaser:

\$:

18 KENMERE QUICK WEIGHT Q232E (AI) (P)

Tattoo: MCS Q232E Born: 28/10/2019

WCR PRIME CUT 764 PLD (OAC S764E) (P)
 LT RIO BLANCO 1234 P (OAU W591E) (P)
 LT PRAIRIE MAID 4054 (PED -4694E)

SIRE: VPI FREE LUNCH 708T (OAU C6773E) (P)

WCR PRIME CUT 764 PLD (OAC S764E) (P)
 VPI MISS DUCHESS 404 P (PED -5358E) (P)
 VCR MISS DUCHESS 703 PLD (PED -2463E) (P)

LT BLUEGRASS 4017P (OAU Z4017E) (P)
 KENMERE CHOCK E12E (MCS E12E) (P)
 KENMERE KRISTINA III FL87 (MCS M18E)

DAM: KENMERE DOROTHEA N38E (MCS N38E) (P/S)

ROSEDALE Y106E (MR Y106E) (P)
 KENMERE DOROTHEA D38E P (MCS D38E) (P)
 MINNIE-VALE QUEENIE A68E (SGS A68E) (P)

Comments: Quick Weight is a potential Stud Sire. Easy calving and short gestation with plenty of performance in a moderate, stout package. Free Lunch has bred exceptionally well for Kenmere from a heifer that did a great job on her first calf. EBV Percentiles: 1% Calving Ease Direct, Scrotal, Domestic & Export Indexes, 5% Calving Ease Daughters, Gestation, Birth Wt, Rib & Rump Fat, IMF, Northern Index, 15% 200 Day Wt.

	CE DIR	CE DTR	GL	BW	200	400	600	MCW	MILK	SS
EBV	+16.3	+7.3	-6.4	-3.8	+17	+28	+37	+37	+9	+3.2
Acc	50%	45%	72%	72%	66%	68%	66%	63%	54%	75%

	CW	EMA	RIB	RUMP	RBV	IMF
EBV	+24	+0.9	+1.8	+2.8	-1.6	+1.0
Acc	59%	54%	59%	58%	56%	53%

\$ Index Values	
Dom (\$)	Exp (\$)
+\$70	+\$101



Purchaser:

\$:

19 KENMERE QUICK SOLVE Q210E (P) (R/F)

Tattoo: MCS Q210E Born: 25/09/2019

LT SILVER DISTANCE 5342 (OAU A7559E) (P)
 LT LONG DISTANCE 9001 (OAU E143E) (P)
 LT BELLE 7026 (OAU C9133E) (P)

SIRE: KENMERE MAXIMUS (MCS M19E) (P)

KENMERE GRAND MASTER (MCS G6E) (P)
 KENMERE NICOLA J46E (MCS J46E) (P)
 KENMERE NICOLA F73E (MCS F73E) (P)

PALGROVE UPTURN (PK U353E)
 ADVANCE XR8 (ADV X50E)
 ADVANCE GINA R/F (ADV T3E)

DAM: GOBONGO ELODIE E117E (GO E117E) (P)

GOBONGO WYATT ERP (GO W29E) (P)
 GOBONGO ELODIE A8E (GO A8E) (P)
 GOBONGO ELODIE X100E (GO X100E)

Comments: Quick Solve has a calving ease pedigree with performance. A good, red factor, fleshy bull with a neat sheath. Dam's mature cow weight EBV is in the top 1% of the breed that will pump weight into progeny. EBV Percentiles: 5% Calving Ease Direct, Export & Northern Indexes, 10% Gestation, 200 Day Wt, IMF, Domestic Index, 15% Birth Wt, 600 Day Wt, Milk, Rib & Rump Fat.

	CE DIR	CE DTR	GL	BW	200	400	600	MCW	MILK	SS
EBV	+15.2	+3.2	-5.1	-1.7	+19	+22	+45	+48	+11	+1.0
Acc	49%	40%	53%	73%	66%	68%	66%	62%	50%	75%

	CW	EMA	RIB	RUMP	RBY	IMF
EBV	+19	+0.5	+1.4	+1.5	-1.4	+0.7
Acc	58%	51%	56%	55%	54%	51%

\$ Index Values

Dom (\$)	Exp (\$)
+\$46	+\$72



Purchaser:

\$:

20 KENMERE QUICK TEST Q213E (P) (R/F)

Tattoo: MCS Q213E Born: 10/10/2019

LT SILVER DISTANCE 5342 (OAU A7559E) (P)
 LT LONG DISTANCE 9001 (OAU E143E) (P)
 LT BELLE 7026 (OAU C9133E) (P)

SIRE: KENMERE MAXIMUS (MCS M19E) (P)

KENMERE GRAND MASTER (MCS G6E) (P)
 KENMERE NICOLA J46E (MCS J46E) (P)
 KENMERE NICOLA F73E (MCS F73E) (P)

DBAR SYNERGY 721T (OAC C3100E) (P)
 ASHWOOD PARK SYNERGY G29E (HAS G29E) (P)
 ASHWOOD PARK ANGEL 2 (HAS D22E) (P)

DAM: KENMERE QUE SERA L97E (MCS L97E) (P)

LT BLUEGRASS 4017P (OAU Z4017E) (P)
 KENMERE QUE SERA E95E (MCS E95E) (P)
 KENMERE QUE SERA B8E (MCS B8E) (P)

Comments: Quick Test is a true to type Maximus son with good calving ease and great feet. He is out of a high milking female who is in the top 1% breed. EBV Percentiles: 1% Calving Ease Direct, Birth Wt, 5% Calving Ease Daughters, Gestation, Milk, IMF, 10% Rib & Rump Fat, Domestic & Export Indexes.

	CE DIR	CE DTR	GL	BW	200	400	600	MCW	MILK	SS
EBV	+18.3	+8.7	-6.7	-4.7	+8	+4	+7	-13	+16	+0.0
Acc	48%	38%	54%	73%	66%	68%	66%	62%	46%	75%

	CW	EMA	RIB	RUMP	RBY	IMF
EBV	+5	+1.1	+1.7	+2.1	-1.2	+0.9
Acc	57%	52%	57%	56%	55%	51%

\$ Index Values

Dom (\$)	Exp (\$)
+\$50	+\$67



Purchaser:

\$:

**HOMOZYGOUS
POLL - DNA**

21 KENMERE QUALITY KID Q150E (AI) (P)

Tattoo: MCS Q150E Born: 04/08/2019

RAINBOW MR CYRANO 32D (PED -1187E)
MVX COUGARHILL HANK 720G (PED -52E)
MVX EDITH 806X (PED -1304E)

SIRE: PCC SUDDEN IMPACT 848U (OAC D1017E) (P)

SPARROWS ADVANTAGE 230H (PED -5580E)
SPARROWS TEMPEST 174K (PED -732E) (P)
SPARROWS SPARKEL 74F (PED -8148E) (P)

LT WYOMING WIND 4020 PLD (OAU P4020E) (P)
PLATINUM WIND-FALL W75E (AJ1 W75E) (P)
DOWNUNDER GERALDINE (1LP G1D)

DAM: KENMERE PING K88E (MCS K88E) (P)

SILVERSTREAM PERFORMER P38EF (83 U38F)
KENMERE PING MCS G23E (MCS G23E) (P)
MINNIE-VALE PING A49E (SGS A49E) (P)

	CE DIR	CE DTR	GL	BW	200	400	600	MCW	MILK	SS
EBV	-22.2	+2.0	-2.2	+2.9	+17	+32	+54	+49	+9	+2.6
Acc	48%	44%	74%	72%	65%	67%	65%	62%	52%	74%

	CW	EMA	RIB	RUMP	RBV	IMF
EBV	+25	+2.0	+1.7	+2.1	-0.5	+0.6
Acc	57%	51%	56%	55%	54%	51%

\$ Index Values	
Dom (\$)	Exp (\$)
-\$8	-\$3

Comments: Homo Polled. Quality Kid is a big performance bull with a large scrotal, depth of body and a quiet nature. He would make a great cow breeder. EBV Percentiles: 5% 600 Day Wt, Scrotal, 10% Rib & Rump Fat, 15% 200 & 400 Day Wt.

Purchaser:

\$:

22 KENMERE QUARTER MILE Q153E (AI) (P)

Tattoo: MCS Q153E Born: 05/08/2019

RAINBOW MR CYRANO 32D (PED -1187E)
MVX COUGARHILL HANK 720G (PED -52E)
MVX EDITH 806X (PED -1304E)

SIRE: PCC SUDDEN IMPACT 848U (OAC D1017E) (P)

SPARROWS ADVANTAGE 230H (PED -5580E)
SPARROWS TEMPEST 174K (PED -732E) (P)
SPARROWS SPARKEL 74F (PED -8148E) (P)

LT WESTERN SPUR 2061 PLD (OAU X2061E) (P)
KENMERE DAKOTA SPUR D9E (MCS D9E)
KARINA INVESTMENTS WINDY WENDY (GPK A15E) (P)

DAM: KENMERE KOURTNEY (MCS K8E)

NANDILLYAN PEUGEOT (F U1E) (P)
CALOONA PARK A0091 (LSF A91E) (P)
CALOONA PARK WILMA (LSF W4E)

	CE DIR	CE DTR	GL	BW	200	400	600	MCW	MILK	SS
EBV	-17.6	-6.4	-1.6	+2.1	+13	+31	+44	+45	+8	+2.1
Acc	46%	42%	73%	72%	65%	66%	64%	59%	52%	74%

	CW	EMA	RIB	RUMP	RBV	IMF
EBV	+28	+2.2	+1.6	+2.0	-0.1	+0.0
Acc	55%	50%	55%	54%	53%	49%

\$ Index Values	
Dom (\$)	Exp (\$)
-\$5	-\$3

Comments: Quarter Mile is a powerhouse son of the Canadian sire Sudden Impact for those looking for a cow breeder. Dam Kemmaere Kourtney's Mature cow weight is in top 10% breed. EBV Percentiles: 10% Scrotal, Rib & Rump Fat, 15% Carcase Wt, 20% 400 & 600 Day Wt, EMA.

Purchaser:

\$:

23 KENMERE QUICK THINKER Q131E (AI) (P)

Tattoo: MCS Q131E Born: 29/07/2019

RAINBOW MR CYRANO 32D (PED -1187E)
MVX COUGARHILL HANK 720G (PED -52E)
MVX EDITH 806X (PED -1304E)

SIRE: PCC SUDDEN IMPACT 848U (OAC D1017E) (P)

SPARROWS ADVANTAGE 230H (PED -5580E)
SPARROWS TEMPEST 174K (PED -732E) (P)
SPARROWS SPARKEL 74F (PED -8148E) (P)

LT BLUEGRASS 4017P (OAU Z4017E) (P)
KENMERE CHOCK E12E (MCS E12E) (P)
KENMERE KRISTINA III FL87 (MCS M18E)

DAM: KENMERE TINKERBELLE H8E (MCS H8E) (P)

LT WESTERN EDGE 4057 PLD (OAU Z6616E) (P)
KENMERE TINKERBELLE E91E (MCS E91E) (P)
KENMERE TINKERBELLE (KNC T60E)

	CE DIR	CE DTR	GL	BW	200	400	600	MCW	MILK	SS
EBV	+0.3	+7.7	-5.1	-0.7	+9	+24	+38	+13	+13	+2.2
Acc	48%	43%	74%	73%	65%	67%	64%	61%	54%	75%

	CW	EMA	RIB	RUMP	RBV	IMF
EBV	+24	+1.1	+1.1	+1.2	-0.5	+0.1
Acc	56%	51%	55%	54%	53%	50%

\$ Index Values	
Dom (\$)	Exp (\$)
+\$33	+\$48

Comments: Homo Polled. Quick Thinker is a big performance bull that has a well-set shoulder and a big scrotal. He would breed great cows. EBV Percentiles: 5% Calving Ease Daughters, 10% Gestation, Milk, Scrotal, 20% Birth Wt.

Purchaser:

\$:

**HOMOZYGOUS
POLL - DNA**

24 KENMERE QUIZ SHOW Q136E (P)

Tattoo: MCS Q136E Born: 31/07/2019

DBAR SYNERGY 721T (OAC C3100E) (P)
 ASHWOOD PARK SYNERGY G29E (HAS G29E) (P)
 ASHWOOD PARK ANGEL 2 (HAS D22E) (P)

SIRE: KENMERE LODGER (MCS L58E) (P)

KENMERE CHOCK E12E (MCS E12E) (P)
 KENMERE TINKERBELLE H8E (MCS H8E) (P)
 KENMERE TINKERBELLE E91E (MCS E91E) (P)

GUNNADOO NUGGET N166D R/F (GN1 N166D)
 KENMERE NUGGETT G68E (MCS G68E) (P)
 KENMERE CALAMITY C56E (MCS C56E) (P)

DAM: KENMERE KIORA (MCS K18E) (P)

LT SILVER VALUE 2122 P (OAU X5761E) (P)
 KENMERE FUCHSIA (MCS F68E) (P)
 KARINA INVESTMENTS WINDY WENDY (GPK A15E) (P)

Comments: Quiz Show is a big, deep, clean polled later maturing type bull that would suit joining cows. EBV Percentiles: 15% Milk, Rib & Rump Fat, 20% Gestation, Scrotal.

	CE DIR	CE DTR	GL	BW	200	400	600	MCW	MILK	SS
EBV	-0.6	+0.1	-4.2	-0.5	+14	+28	+38	+25	+11	+1.6
Acc	40%	36%	51%	71%	63%	65%	64%	60%	45%	74%

	CW	EMA	RIB	RUMP	RBV	IMF
EBV	+22	+1.0	+1.3	+1.6	-0.2	-0.4
Acc	55%	49%	54%	53%	53%	48%

\$ Index Values	
Dom (\$)	Exp (\$)
+\$27	+\$38



Purchaser: _____

\$: _____

25 KENMERE QUICK QUOTE Q222E (P)

Tattoo: MCS Q222E Born: 23/10/2019

LT BLUEGRASS 4017P (OAU Z4017E) (P)
 KENMERE CHOCK E12E (MCS E12E) (P)
 KENMERE KRISTINA III FL87 (MCS M18E)

SIRE: KENMERE CHOCK N20E (MCS N20E) (P)

GOBONGO BOY G196E (GO G196E) (P)
 KENMERE KIKO (MCS K19E) (P)
 KENMERE GRACE (MCS G73E)

LT EASY BLEND 5125 PLD (OAU A5113E) (P)
 KENMERE RADIATOR E90E (MCS E90E) (P)
 MINNIE-VALE RADIANCE B34E (SGS B34E) (P)

DAM: KENMERE LYNDA (MCS L104E) (P)

GOBONGO VILLEROY V80E (GO V80E)
 KENMERE FRAGRANCE (MCS F90E) (P)
 QUICKSILVER BREE (1QS B7E) (P)

Comments: Quick Quote is clean made performance bull with plenty of growth and length like his sire. He is the first N20E son to be offered for sale. EBV Percentiles: 5% 600 Day & Mature Cow Wt, 10% 200 Day Wt, Rib & Rump Fat, 15% Scrotal, 20% 400 Day Wt.

	CE DIR	CE DTR	GL	BW	200	400	600	MCW	MILK	SS
EBV	-9.2	+3.3	-2.4	+2.2	+19	+30	+56	+68	+9	+1.7

	CW	EMA	RIB	RUMP	RBV	IMF
EBV	+25	+0.9	+1.6	+2.1	-0.9	-0.1
Acc	54%	49%	53%	52%	52%	48%

\$ Index Values	
Dom (\$)	Exp (\$)
+\$11	+\$27



Purchaser: _____

\$: _____

26

KENMERE QUICK MIX Q137E (AI) (P)

HOMOZYGOUS
POLL - DNA

Tattoo: MCS Q137E Born: 31/07/2019

\$CECILE COBB (PED -4414E) (P)

S\$ MONTANA SILVER (OAU R4024E) (P)

\$ STAGE'S MISS DC BAR (PED -1211E) (P)

SIRE: NWMSU DOC SILVER 362 PLD (OAU Y9488E) (P)

HCR FLASH 5074 POLLED (OAU E5074E) (P)

NWMSU DOLORES ET 0035 (PED -8646E)

BBCR DOLORES 337 PLD (PED -2541E)

GOBONGO DECOY D85E (GO D85E) (P)

GOBONGO BOY G196E (GO G196E) (P)

GOBONGO ELODIE E117E (GO E117E) (P)

DAM: KENMERE NICOLA K39E (MCS K39E) (P)

LT BLUEGRASS 4017P (OAU Z4017E) (P)

KENMERE NICOLA G7E (MCS G7E) (P)

KENMERE NICOLA (MCS N56E)

	CE DIR	CE DTR	GL	BW	200	400	600	MCW	MILK	SS
EBV	+17.8	+9.3	-4.1	-4.3	+7	+17	+19	+0	+19	+1.3
Acc	51%	48%	74%	73%	67%	69%	67%	65%	58%	76%

	CW	EMA	RIB	RUMP	RBV	IMF
EBV	+16	+1.9	+1.2	+1.8	-1.0	+1.2
Acc	61%	56%	60%	60%	59%	56%

\$ Index Values

Dom (\$)	Exp (\$)
+\$65	+\$85

Comments: Homo Polled. Quick Mix is an easy calving bull that could produce calves for several markets. A good all-rounder! EBV Percentiles: 1% Calving Ease Direct, Birth Wt, Milk, Domestic Index, 5% Calving Ease Daughters, IMF, Export Index, 10% Northern Index, 15% Rib & Rump Fat, 20% Gestation.

Purchaser:

\$:

27

KENMERE QUARTER TIME Q152E (AI) (P)

HOMOZYGOUS
POLL - DNA

Tattoo: MCS Q152E Born: 04/08/2019

2UP PEUGEOT (2UP P46E) (P)

NANDILLYAN PEUGEOT (F U1E) (P)

ROSEDALE WALLAH Q69 (MR Q69E+95) (P)

SIRE: KENMERE LANZ (MCS L23E) (P)

ROSEDALE Y106E (MR Y106E) (P)

KENMERE CALAMITY C56E (MCS C56E) (P)

MINNIE-VALE PING A49E (SGS A49E) (P)

LT BLUEGRASS 4017P (OAU Z4017E) (P)

KENMERE CHOCK E12E (MCS E12E) (P)

KENMERE KRISTINA III FL87 (MCS M18E)

DAM: KENMERE MICHELLE K103E (MCS K103E) (P)

GREENWOOD XPLOSION (TSP X32E) (P)

MINNIE-VALE MICHELLE B28E (SGS B28E) (P)

MINNIE-VALE MICHELLE V93E (SGS V93E)

	CE DIR	CE DTR	GL	BW	200	400	600	MCW	MILK	SS
EBV	+7.6	-2.0	-2.0	-0.9	+7	+12	+17	+18	+9	+2.0
Acc	44%	40%	73%	72%	64%	67%	65%	61%	46%	74%

	CW	EMA	RIB	RUMP	RBV	IMF
EBV	+9	+0.4	+1.7	+2.4	-1.5	+0.7
Acc	57%	51%	56%	55%	54%	50%

\$ Index Values

Dom (\$)	Exp (\$)
+\$29	+\$42

Comments: Homo Polled. Quarter Time is a long, smooth, deep bull with a good sheath set up. His sire Kenmere Lanz was sold to Elstow Charolais at our 2017 Sale. EBV Percentiles: 5% Rump Fat, 10% Scrotal, Rib Fat, IMF, 15% Calving Ease Direct, 20% Birth Wt.

Purchaser:

\$:

28

KENMERE QUICK PAY Q160E (P/S) (R/F)

Tattoo: MCS Q160E Born: 09/08/2019

LT SILVER DISTANCE 5342 (OAU A7559E) (P)

LT LONG DISTANCE 9001 (OAU E143E) (P)

LT BELLE 7026 (OAU C9133E) (P)

SIRE: KENMERE MAXIMUS (MCS M19E) (P)

KENMERE GRAND MASTER (MCS G6E) (P)

KENMERE NICOLA J46E (MCS J46E) (P)

KENMERE NICOLA F73E (MCS F73E) (P)

LT EASY BLEND 5125 PLD (OAU A5113E) (P)

KENMERE RADIATOR E90E (MCS E90E) (P)

MINNIE-VALE RADIANCE B34E (SGS B34E) (P)

DAM: KENMERE NAVARRO M1E (MCS M1E) (P/S)

KENMERE EXPRESS 104E (MCS E104E) (P)

KENMERE NAVARRO H69E (MCS H69E) (P)

KENMERE NAVARRO F12E (MCS F12E)

	CE DIR	CE DTR	GL	BW	200	400	600	MCW	MILK	SS
EBV	+19.8	+9.3	-5.8	-4.7	+7	+9	+11	-1	+13	-0.3
Acc	47%	37%	52%	73%	65%	67%	65%	61%	46%	75%

	CW	EMA	RIB	RUMP	RBV	IMF
EBV	+10	+0.2	+0.6	+0.8	-1.3	+0.8
Acc	56%	51%	55%	54%	53%	50%

\$ Index Values

Dom (\$)	Exp (\$)
+\$51	+\$67

Comments: Quick Pay is an easy calving Maximus son with a bigger frame. He is clean fronted and has a good scrotal and sheath set up. EBV Percentiles: 1% Calving Ease Direct, Birth Wt, 5% Calving Ease Daughters, Gestation, 10% Milk, IMF, Domestic & Export Indexes.

Purchaser:

\$:

29 KENMERE QUIET STORM Q133E (AI) (P)

Tattoo: MCS Q133E Born: 30/07/2019

§CECILE COBB (PED -4414E) (P)
 S\$ MONTANA SILVER (OAU R4024E) (P)
 § STAGE'S MISS DC BAR (PED -1211E) (P)

SIRE: NWMSU DOC SILVER 362 PLD (OAU Y9488E) (P)

HCR FLASH 5074 POLLED (OAU E5074E) (P)
 NWMSU DOLORES ET 0035 (PED -8646E)
 BBCR DOLORES 337 PLD (PED -2541E)

GOBONGO DECOY D85E (GO D85E) (P)
 GOBONGO BOY G196E (GO G196E) (P)
 GOBONGO ELODIE E117E (GO E117E) (P)

DAM: KENMERE RADIANCE J79E (MCS J79E) (P)

KENMERE DAKOTA SPUR D9E (MCS D9E)
 KENMERE RADIANCE G14E (MCS G14E) (P)
 KENMERE RADIANCE D21E (MCS D21E) (P)

Comments: Quiet Storm is an easy calving bull with a large scrotal and good numbers. He would make a great female breeder. Doc Silver progeny in the Charolais Breed have been renown for poll cattle, fertility, live calves and growth. EBV Percentiles: 1% Calving Ease Daughters, Milk, Domestic & Export Index, 5% Calving Ease Direct, Birth Wt, IMF, Northern Index, 10% Gestation, Scrotal, Rib & Rump Fat.

	CE DIR	CE DTR	GL	BW	200	400	600	MCW	MILK	SS
EBV	+14.9	+11.3	-4.8	-4.0	+9	+24	+29	+11	+21	+1.9
Acc	52%	49%	74%	73%	66%	64%	64%	64%	59%	57%

	CW	EMA	RIB	RUMP	RBY	IMF
EBV	+21	+1.5	+1.6	+2.2	-1.2	+0.9
Acc	55%	48%	53%	52%	50%	48%

\$ Index Values	
Dom (\$)	Exp (\$)
+\$69	+\$92



Purchaser:

\$:

30 KENMERE QUIET TIME Q135E (P)

Tattoo: MCS Q135E Born: 30/07/2019

LT SILVER DISTANCE 5342 (OAU A7559E) (P)
 LT LONG DISTANCE 9001 (OAU E143E) (P)
 LT BELLE 7026 (OAU C9133E) (P)

SIRE: KENMERE MAXIMUS (MCS M19E) (P)

KENMERE GRAND MASTER (MCS G6E) (P)
 KENMERE NICOLA J46E (MCS J46E) (P)
 KENMERE NICOLA F73E (MCS F73E) (P)

KENMERE RADIATOR E90E (MCS E90E) (P)
 KENMERE HERICHIO (MCS H103E) (P)
 KENMERE DIAMOND SPUR D8E (MCS D8E) (P)

DAM: KENMERE PERLINA M57E (MCS M57E) (P)

LT BLUEGRASS 4017P (OAU Z4017E) (P)
 KENMERE PERLINA D27E (MCS D27E) (P)
 KENMERE PERLINA (MCS P78E)

Comments: Homo Polled. Quiet Time is another easy calving Maximus son that will do a great job breeding steers. EBV Percentiles: 1% Calving Ease Direct, 5% Birth Wt, 10% Gestation, Rib & Rump Fat, 15% IMF, 20% Domestic & Export Indexes.

	CE DIR	CE DTR	GL	BW	200	400	600	MCW	MILK	SS
EBV	+16.3	+2.9	-5.1	-3.2	+4	+4	+5	-6	+8	+0.1
Acc	47%	36%	51%	71%	66%	67%	64%	62%	44%	75%

	CW	EMA	RIB	RUMP	RBY	IMF
EBV	+2	-0.3	+1.5	+1.9	-1.9	+0.8
Acc	56%	50%	54%	53%	52%	49%

\$ Index Values	
Dom (\$)	Exp (\$)
+\$37	+\$50



Purchaser:

\$:

**HOMOZYGOUS
 POLL - DNA**

31 KENMERE QUALITY NEWS Q156E (AI) (P)

Tattoo: MCS Q156E Born: 05/08/2019

NANDILLYAN PEUGEOT (F U1E) (P)

KENMERE GARRISON (MCS G9E) (P)

KENMERE CALAMITY C56E (MCS C56E) (P)

SIRE: KENMERE MIGUEL (MCS M23E) (P)

LT WESTERN EDGE 4057 PLD (OAU Z6616E) (P)

KENMERE PING J65E (MCS J65E) (P)

KENMERE PING MCS G23E (MCS G23E) (P)

LT EASY BLEND 5125 PLD (OAU A5113E) (P)

KENMERE RADIATOR E90E (MCS E90E) (P)

MINNIE-VALE RADIANCE B34E (SGS B34E) (P)

DAM: KENMERE QUE SERA M105E (MCS M105E) (P)

LT BLUEGRASS 4017P (OAU Z4017E) (P)

KENMERE QUE SERA E119E (MCS E119E) (P)

KENMERE QUE SERA B6E (MCS B6E) (P)

Comments: Homo Polled. Quality News is a low birth weight bull like his Sire, Miquel. He is long and quiet with a balanced set of numbers. EBV Percentiles: 5% Calving Ease Daughters, Milk, 10% Calving Ease Direct, Gestation, Birth Wt, Rib & Rump Fat, Domestic & Export Indexes.

	CE DIR	CE DTR	GL	BW	200	400	600	MCW	MILK	SS
EBV	+9.5	+9.0	-5.0	-2.4	+8	+17	+18	+18	+14	+1.5
Acc	40%	34%	70%	68%	63%	65%	62%	59%	42%	74%

	CW	EMA	RIB	RUMP	RBV	IMF
EBV	+14	+0.7	+1.5	+1.9	-1.2	+0.2
Acc	54%	48%	51%	50%	50%	47%

\$ Index Values

Dom (\$)	Exp (\$)
+\$46	+\$59



Purchaser:

\$:

32 KENMERE QUANTUM PRO Q159E (P)

Tattoo: MCS Q159E Born: 06/08/2019

LT SILVER DISTANCE 5342 (OAU A7559E) (P)

LT LONG DISTANCE 9001 (OAU E143E) (P)

LT BELLE 7026 (OAU C9133E) (P)

SIRE: KENMERE MAXIMUS (MCS M19E) (P)

KENMERE GRAND MASTER (MCS G6E) (P)

KENMERE NICOLA J46E (MCS J46E) (P)

KENMERE NICOLA F73E (MCS F73E) (P)

GOBONGO DECOY D85E (GO D85E) (P)

GOBONGO BOY G196E (GO G196E) (P)

GOBONGO ELODIE E117E (GO E117E) (P)

DAM: KENMERE NAVARRO K72E (MCS K72E) (P)

GOBONGO VILLEROY V80E (GO V80E)

KENMERE NAVARRO F12E (MCS F12E)

KENMERE NAVARRO (MCS N35D)

Comments: Quantum Pro is an easy calving, moderate, safe bull that will do a great job across different market scenarios. EBV Percentiles: 1% Calving Ease Direct, 5% Birth Wt, Milk, 10% Gestation, Rib & Rump Fat, IMF, 15% Domestic & Export Indexes.

	CE DIR	CE DTR	GL	BW	200	400	600	MCW	MILK	SS
EBV	+17.5	+0.6	-5.2	-3.9	+7	+6	+16	+0	+16	+0.7
Acc	46%	38%	50%	73%	65%	67%	65%	62%	46%	75%

	CW	EMA	RIB	RUMP	RBV	IMF
EBV	+7	+0.0	+1.7	+2.0	-1.8	+0.7
Acc	56%	50%	55%	54%	53%	50%

\$ Index Values

Dom (\$)	Exp (\$)
+\$39	+\$56



Purchaser:

\$:

33 KENMERE QUICK FLICK Q177E (P/S)

Tattoo: MCS Q177E Born: 21/08/2019

LT SILVER DISTANCE 5342 (OAU A7559E) (P)
 LT LONG DISTANCE 9001 (OAU E143E) (P)
 LT BELLE 7026 (OAU C9133E) (P)

SIRE: KENMERE MAXIMUS (MCS M19E) (P)

KENMERE GRAND MASTER (MCS G6E) (P)
 KENMERE NICOLA J46E (MCS J46E) (P)
 KENMERE NICOLA F73E (MCS F73E) (P)

LT BLUEGRASS 4017P (OAU Z4017E) (P)

KENMERE CHOCK E12E (MCS E12E) (P)
 KENMERE KRISTINA III FL87 (MCS M18E)

DAM: KENMERE LEISEL L8E (MCS L88E) (P/S)

KENMERE RADIATOR E90E (MCS E90E) (P)
 KENMERE BLISSFUL H82E (MCS H82E) (P)
 ROSEDALE BLISSFUL Z210 (MR Z210E) (P)

	CE DIR	CE DTR	GL	BW	200	400	600	MCW	MILK	SS
EBV	+18.8	+7.8	-4.6	-3.1	+10	+14	+24	+23	+11	+0.0
Acc	48%	38%	53%	73%	66%	68%	66%	63%	47%	75%

	CW	EMA	RIB	RUMP	RBY	IMF
EBV	+11	-0.9	+1.3	+1.5	-2.3	+0.9
Acc	58%	52%	58%	57%	56%	52%

\$ Index Values	
Dom (\$)	Exp (\$)
+\$50	+\$71

Comments: Quick Flick is a moderate, easy calving bull with a good sheath set up. EBV Percentiles: 1% Calving Ease Direct, 5% Calving Ease Daughters, Birth Wt, Export Index, 10% Milk, Domestic Index, 15% Gestation, Rib & Rump Fat, IMF, 20% Northern Index.

Purchaser:

\$:

34 KENMERE QUICK GAME Q178E (P/S)

Tattoo: MCS Q178E Born: 21/08/2019

LT SILVER DISTANCE 5342 (OAU A7559E) (P)
 LT LONG DISTANCE 9001 (OAU E143E) (P)
 LT BELLE 7026 (OAU C9133E) (P)

SIRE: KENMERE MAXIMUS (MCS M19E) (P)

KENMERE GRAND MASTER (MCS G6E) (P)
 KENMERE NICOLA J46E (MCS J46E) (P)
 KENMERE NICOLA F73E (MCS F73E) (P)

LT BLUEGRASS 4017P (OAU Z4017E) (P)

KENMERE CHOCK E12E (MCS E12E) (P)
 KENMERE KRISTINA III FL87 (MCS M18E)

DAM: KENMERE QUE SERA L87E (MCS L87E)

KENMERE DAKOTA SPUR D9E (MCS D9E)
 KENMERE QUE SERA G16E (MCS G16E) (P)
 KENMERE QUE SERA (KNC Q18E) (P)

	CE DIR	CE DTR	GL	BW	200	400	600	MCW	MILK	SS
EBV	+22.3	+7.4	-5.6	-5.0	+5	+0	-1	-10	+10	-1.2
Acc	48%	39%	54%	73%	66%	68%	66%	63%	46%	75%

	CW	EMA	RIB	RUMP	RBY	IMF
EBV	+3	-0.7	+1.9	+2.4	-2.4	+0.7
Acc	58%	52%	57%	56%	56%	52%

\$ Index Values	
Dom (\$)	Exp (\$)
+\$43	+\$57

Comments: Quick Game would suit joining heifers. He is low birth weight and moderate with exceptional calving ease. EBV Percentiles: 1% Calving Ease Direct, Birth Wt, 5% Rib & Rump Fat, 10% Calving Ease Daughters, Gestation, IMF, Domestic Index, 15% Export Index, 20% Milk.

Purchaser:

\$:

35 KENMERE QUICK GRADE Q192E (AI) (P)

Tattoo: MCS Q192E Born: 04/09/2019

SILVERSTREAM BRUMBY B89 (OAN B89E) (P)
 SILVERSTREAM EVOLUTION E168 (OAN E168E) (P)
 SILVERSTREAM GLOSSY S120 (OAN W120E)

SIRE: PALGROVE JUSTICE (PK J603E) (P)

PALGROVE BARRISTER S (PK B241E) (P)
 PALGROVE AMY 36 (PK E479E) (P)
 PALGROVE AMY 30 (PK C230E) (P)

LT ASSERTION 1277 (PED W1277F) (P)

LT BLUEGRASS 4017P (OAU Z4017E) (P)
 LT PEARLS BREEZE 2236 (PED X2236F) (P)

DAM: KENMERE KRISTINA E16E (MCS E16E) (P)

MANDALONG CHOCK (RP C59E) (P/S)
 KENMERE KRISTINA III FL87 (MCS M18E)
 GILMANDYKE PARK KRISTINA 2ND (AGP N17F)

	CE DIR	CE DTR	GL	BW	200	400	600	MCW	MILK	SS
EBV	+8.1	-3.4	-4.3	+1.3	+13	+20	+28	+32	+0	+0.7
Acc	51%	46%	75%	73%	68%	69%	66%	63%	53%	76%

	CW	EMA	RIB	RUMP	RBY	IMF
EBV	+17	+2.2	+0.2	+0.2	+0.8	-0.4
Acc	59%	55%	59%	58%	57%	55%

\$ Index Values	
Dom (\$)	Exp (\$)
+\$23	+\$33

Comments: Quick Grade is out of one of our best cows (Chocks full sister) and his sire, Justice has produced high selling bulls for Palgrove. He is a compact bull with a good sheath and scrotal. EBV Percentiles: 15% Calving Ease Direct, 20% Gestation, RBY.

Purchaser:

\$:

36

KENMERE QUICK MAP Q205E (P)

Tattoo: MCS Q205E Born: 12/09/2019

- AMBERLEY CAIN (ACH C6E) (P)
- BRANCH VIEW GOMEZ (BVC G11E) (P)
- BRANCH VIEW VENESSA A11E (BVC A11E) (P)

SIRE: ELSTOW LIGHTFINGERS (BMM L85E) (P)

- ELSTOW BUNDY (BMM B29E) (P)
- ELSTOW CUTE H161 (BMM H161E) (P)
- ELSTOW CUTE E15E (BMM E15E) (P)

- LT BLUEGRASS 4017P (OAU Z4017E) (P)
- KENMERE EXPRESS 104E (MCS E104E) (P)
- KENMERE TRES BONNE (KNC T49E) (P)
- DAM: KENMERE PRIMROSE H71E (MCS H71E) (P)**
- KENMERE CONQUERER C34E (MCS C34E) (P)
- KENMERE PRIMROSE E71E (MCS E71E) (P)
- KARINA INVESTMENTS PRIMROSE 2 (GPK A4E) (P)

Comments: Quick Map is a young bull with a strong top and a good scrotal and sheath set up. EBV Percentiles: 10% Scrotal, 15% Rump Fat, 20% Rib Fat, IMF.

	CE DIR	CE DTR	GL	BW	200	400	600	MCW	MILK	SS
EBV	-1.8	-3.4	-2.3	+0.1	+6	+12	+19	+13	+3	+2.1
Acc	40%	32%	44%	71%	64%	66%	64%	58%	42%	74%

	CW	EMA	RIB	RUMP	RBV	IMF
EBV	+10	+0.9	+1.0	+1.8	-0.5	+0.5
Acc	55%	48%	54%	53%	52%	47%

\$ Index Values

Dom (\$) Exp (\$)

+\$14 +\$25



Purchaser:

\$:

37

KENMERE QUICK GUIDE Q179E (P) (R/F)

Tattoo: MCS Q179E Born: 21/08/2019

- LT SILVER DISTANCE 5342 (OAU A7559E) (P)
- LT LONG DISTANCE 9001 (OAU E143E) (P)
- LT BELLE 7026 (OAU C9133E) (P)

SIRE: KENMERE MAXIMUS (MCS M19E) (P)

- KENMERE GRAND MASTER (MCS G6E) (P)
- KENMERE NICOLA J46E (MCS J46E) (P)
- KENMERE NICOLA F73E (MCS F73E) (P)

- LT WESTERN SPUR 2061 PLD (OAU X2061E) (P)
- KENMERE DAKOTA SPUR D9E (MCS D9E)
- KARINA INVESTMENTS WINDY WENDY (GPK A15E) (P)

DAM: KENMERE QUE SERA G66E (MCS G66E) (P)

- ROSEDALE Y106E (MR Y106E) (P)
- KENMERE QUE SERA B6E (MCS B6E) (P)
- KENMERE QUE SERA (KNC Q18E) (P)

Comments: Quick Guide is a low birth weight, quiet red factor bull that has great calving ease. EBV Percentiles: 1% Calving Ease Direct, 5% Birth Wt, 10% Gestation, Milk, 20% IMF.

	CE DIR	CE DTR	GL	BW	200	400	600	MCW	MILK	SS
EBV	+16.3	+1.8	-5.1	-3.2	+1	-1	+3	-18	+12	-0.3
Acc	49%	40%	52%	73%	66%	68%	66%	62%	49%	76%

	CW	EMA	RIB	RUMP	RBV	IMF
EBV	+2	-0.4	+0.3	+0.3	-1.0	+0.5
Acc	58%	52%	57%	56%	55%	52%

\$ Index Values

Dom (\$) Exp (\$)

+\$27 +\$37



Purchaser:

\$:

38 KENMERE QUICK ASCEND Q218E (P/S) (R/F)

Tattoo: MCS Q218E Born: 20/10/2019

LT SILVER DISTANCE 5342 (OAU A7559E) (P)
 LT LONG DISTANCE 9001 (OAU E143E) (P)
 LT BELLE 7026 (OAU C9133E) (P)

SIRE: KENMERE MAXIMUS (MCS M19E) (P)

KENMERE GRAND MASTER (MCS G6E) (P)
 KENMERE NICOLA J46E (MCS J46E) (P)
 KENMERE NICOLA F73E (MCS F73E) (P)

KENMERE CHOCK E12E (MCS E12E) (P)
 KENMERE GANGSTER (MCS G54E) (P)
 KENMERE DEJAVU D93E (MCS D93E) (P)

DAM: KENMERE QUE SERA K76E (MCS K76E) (P)

LIBERTY EXHIBITIONIST (Y1K E24E) (P)
 KENMERE QUE SERA H33E (MCS H33E) (P)
 KENMERE QUE SERA B9E (MCS B9E)

	CE DIR	CE DTR	GL	BW	200	400	600	MCW	MILK	SS
EBV	+21.7	+6.3	-5.4	-5.0	+4	-4	-2	-19	+9	+0.5
Acc	46%	36%	50%	69%	65%	67%	65%	61%	45%	74%

	CW	EMA	RIB	RUMP	RBY	IMF
EBV	-2	-0.3	+1.9	+2.6	-2.2	+0.9
Acc	56%	51%	56%	55%	54%	50%

\$ Index Values

Dom (\$)	Exp (\$)
+\$42	+\$61

Comments: Quick Ascend is an ideal heifer calving bull. He is sound and quiet with fantastic calving ease. EBV Percentiles: 1% Calving Ease Direct, Birth Wt, 5% Rib Fat, Rump Fat, IMF, 10% Calving Ease Daughters, Gestation, Export Index, 15% Domestic Index.

Purchaser:

\$:

39 KENMERE QUINNLAN Q184E (P)

Tattoo: MCS Q184E Born: 25/08/2019

DBAR SYNERGY 721T (OAC C3100E) (P)
 ASHWOOD PARK SYNERGY G29E (HAS G29E) (P)
 ASHWOOD PARK ANGEL 2 (HAS D22E) (P)

SIRE: KENMERE SYNERGY'S MAN (MCS M40E) (P)

LT BLUEGRASS 4017P (OAU Z4017E) (P)
 KENMERE PING E20E (MCS E20E) (P)
 MINNIE-VALE PING A49E (SGS A49E) (P)

LT EASY BLEND 5125 PLD (OAU A5113E) (P)
 KENMERE RADIATOR E90E (MCS E90E) (P)
 MINNIE-VALE RADIANCE B34E (SGS B34E) (P)

DAM: KENMERE BLISSFUL J51E (MCS J51E) (P)

ROSDALE Y106E (MR Y106E) (P)
 KENMERE BLISSFUL MCS C53E (MCS C53E) (P)
 ROSDALE BLISSFUL Z210 (MR Z210E) (P)

	CE DIR	CE DTR	GL	BW	200	400	600	MCW	MILK	SS
EBV	-20.1	+5.9	-2.0	+1.5	+10	+26	+32	+33	+12	+0.4
Acc	47%	40%	51%	73%	66%	68%	65%	62%	48%	75%

	CW	EMA	RIB	RUMP	RBY	IMF
EBV	+19	+1.8	+2.1	+2.8	-0.8	+0.8
Acc	58%	52%	57%	56%	55%	52%

\$ Index Values

Dom (\$)	Exp (\$)
-\$1	-\$3

Comments: Quinlan is a middle of the road son of Synergy's Man that would produce good steers or replacement females. EBV Percentiles: 5% Calving Ease Daughters, Rib & Rump Fat, 10% Milk, IMF.

Purchaser:

\$:

40 KENMERE QUICK NOTE Q199E (AI) (P)

Tattoo: MCS Q199E Born: 09/09/2019

\$CECILE COBB (PED -4414E) (P)
 S\$ MONTANA SILVER (OAU R4024E) (P)
 \$ STAGE'S MISS DC BAR (PED -1211E) (P)

SIRE: NWMSU DOC SILVER 362 PLD (OAU Y9488E) (P)

HCR FLASH 5074 POLLED (OAU E5074E) (P)
 NWMSU DOLORES ET 0035 (PED -8646E)
 BBCR DOLORES 337 PLD (PED -2541E)

ROSDALE SELECTOR (MR S39E) (P)
 ROSDALE Y106E (MR Y106E) (P)
 ROSDALE GAIETY R40 (MR R40E) (P)

DAM: KENMERE CALAMITY C56E (MCS C56E) (P)

COBRABALD PICASSO (ASH P82E) (P)
 MINNIE-VALE PING A49E (SGS A49E) (P)
 MINNIE-VALE PING W132E (SGS W132E)

	CE DIR	CE DTR	GL	BW	200	400	600	MCW	MILK	SS
EBV	+9.5	-3.3	-2.8	-1.5	+15	+33	+50	+36	+19	+3.1
Acc	57%	55%	76%	75%	69%	71%	69%	67%	63%	77%

	CW	EMA	RIB	RUMP	RBY	IMF
EBV	+26	+2.0	+1.6	+2.6	-0.7	+0.9
Acc	63%	58%	61%	61%	60%	58%

\$ Index Values

Dom (\$)	Exp (\$)
+\$56	+\$81

Comments: Homo Polled. Quick Note is a later maturing, performance bull that's easy calving. Ideal female breeder. EBV Percentiles: 1% Milk, Scrotal, Northern Index, 5% Rump Fat, IMF, Domestic & Export Indexes, 10% Calving Ease Direct, 600 Day Wt, Rib Fat, 15% Birth Wt, 400 Day Wt, 20% Carcase Wt.

Purchaser:

\$:

**HOMOZYGOUS
 POLL - DNA**

41 KENMERE QUICK QUIZ Q187E (AI) (P) (TW)

Tattoo: MCS Q187E Born: 29/08/2019

LT SILVER YIELD 3196 (PED Y5495E) (P)
 LT SILVER DISTANCE 5342 (OAU A7559E) (P)
 LT MATTIE 9026 (OAU U2542E) (P)

SIRE: LT LONG DISTANCE 9001 (OAU E143E) (P)

LT EASY PRO 1158 PLD (OAU W6203E) (P)
 LT BELLE 7026 (OAU C9133E) (P)
 LT BELLE 5110 (OAU A5415E) (P)

ROSEDALE SELECTOR (MR S39E) (P)
 ROSEDALE Y106E (MR Y106E) (P)
 ROSEDALE GAIETY R40 (MR R40E) (P)

DAM: KENMERE BLISSFUL MCS C53E (MCS C53E) (P)

MINNIE-VALE DEPUTY (SGS V78E) (P)
 ROSEDALE BLISSFUL Z210 (MR Z210E) (P)
 ROSEDALE BLISSFUL X91 (MR X91E) (P)

Comments: Quick Quiz is a quiet, low birth weight bull with a well-set shoulder. EBV Percentiles: 5% Calving Ease Direct, Birth Wt, Milk, Rib & Rump Fat, 10% IMF, 15% Calving Ease Daughters, Gestation, Domestic Index, 20% Export Index.

	CE DIR	CE DTR	GL	BW	200	400	600	MCW	MILK	SS
EBV	+11.8	+5.2	-4.5	-3.6	+4	+5	+11	-18	+15	-0.4
Acc	53%	48%	59%	73%	67%	69%	67%	63%	60%	76%

	CW	EMA	RIB	RUMP	RBV	IMF
EBV	+5	+0.3	+2.0	+2.5	-1.6	+0.7
Acc	59%	54%	58%	57%	56%	53%

\$ Index Values

Dom (\$)	Exp (\$)
+\$39	+\$53



Purchaser:

\$:

42 KENMERE QUICK BREAK Q193E (P)

Tattoo: MCS Q193E Born: 04/09/2019

LT SILVER DISTANCE 5342 (OAU A7559E) (P)
 LT LONG DISTANCE 9001 (OAU E143E) (P)
 LT BELLE 7026 (OAU C9133E) (P)

SIRE: KENMERE MAXIMUS (MCS M19E) (P)

KENMERE GRAND MASTER (MCS G6E) (P)
 KENMERE NICOLA J46E (MCS J46E) (P)
 KENMERE NICOLA F73E (MCS F73E) (P)

DBAR SYNERGY 721T (OAC C3100E) (P)
 ASHWOOD PARK SYNERGY G29E (HAS G29E) (P)
 ASHWOOD PARK ANGEL 2 (HAS D22E) (P)

DAM: KENMERE LITTLE OLLIE (MCS L111E) (P)

LT EASY BLEND 5125 PLD (OAU A5113E) (P)
 KENMERE BLISSFUL (MCS E18E) (P)
 ROSEDALE BLISSFUL B178 (MR B178E) (P)

Comments: Homo Polled. Quick Break is a calving ease bull that picks up some extra performance from his dam. He is a later maturing type with a smooth shoulder and a good sheath and hide. EBV Percentiles: 5% Calving Ease Direct, Milk, IMF, Domestic & Export Indexes, 10% Birth Wt, Rib & Rump Fat, Northern Index, 15% Gestation.

**HOMOZYGOUS
 POLL - DNA**

	CE DIR	CE DTR	GL	BW	200	400	600	MCW	MILK	SS
EBV	+14.1	+3.5	-4.5	-2.2	+14	+26	+36	+35	+16	-0.8
Acc	47%	38%	53%	72%	66%	68%	65%	62%	46%	75%

	CW	EMA	RIB	RUMP	RBV	IMF
EBV	+20	+0.2	+1.6	+2.1	-1.9	+1.2
Acc	57%	52%	57%	56%	55%	51%

\$ Index Values

Dom (\$)	Exp (\$)
+\$54	+\$71



Purchaser:

\$:

43 KENMERE QUICK CHANGE Q164E (P)

Tattoo: MCS Q164E Born: 13/08/2019

DBAR SYNERGY 721T (OAC C3100E) (P)
ASHWOOD PARK SYNERGY G29E (HAS G29E) (P)
ASHWOOD PARK ANGEL 2 (HAS D22E) (P)

SIRE: KENMERE SYNERGY'S MAN (MCS M40E) (P)

LT BLUEGRASS 4017P (OAU Z4017E) (P)
KENMERE PING E20E (MCS E20E) (P)
MINNIE-VALE PING A49E (SGS A49E) (P)

CALOONA PARK ABLAZE (LSF A67E) (P)
CALOONA PARK CANON (LSF C62E)
CALOONA PARK UPTIGHT (LSF U5E)

DAM: KENMERE GARNISH (MCS G57E)

WCR SIR FA MAC 2244 (OAU B2244E) (P)
QUICKSILVER BREE (1QS B7E) (P)
TRINITY FARM NOLA (TF1 N4E)

	CE DIR	CE DTR	GL	BW	200	400	600	MCW	MILK	SS
EBV	-3.9	+0.8	-2.7	-0.8	+3	+3	+1	-8	+7	-0.3
Acc	46%	40%	49%	73%	65%	68%	65%	62%	50%	75%

	CW	EMA	RIB	RUMP	RBY	IMF
EBV	+1	+1.3	+1.0	+1.5	-0.2	+0.6
Acc	57%	51%	56%	55%	54%	51%

\$ Index Values

Dom (\$) Exp (\$)

+\$6 +\$6

Comments: Homo Polled. Quick Change is a sound son of Synergy's Man that will produce quality calves. EBV Percentiles: 15% Rump Fat, IMF, 20% Birth Wt, Rib Fat.

Purchaser:

\$:

44 KENMERE QUINCY Q174E (P)

Tattoo: MCS Q174E Born: 18/08/2019

DBAR SYNERGY 721T (OAC C3100E) (P)
ASHWOOD PARK SYNERGY G29E (HAS G29E) (P)
ASHWOOD PARK ANGEL 2 (HAS D22E) (P)

SIRE: KENMERE SYNERGY'S MAN (MCS M40E) (P)

LT BLUEGRASS 4017P (OAU Z4017E) (P)
KENMERE PING E20E (MCS E20E) (P)
MINNIE-VALE PING A49E (SGS A49E) (P)

LIBERTY UNFORGETABULL (Y1K U4E) (P)
LIBERTY EXHIBITIONIST (Y1K E24E) (P)
LIBERTY XTRA TANTALIZING (Y1K X3E) (P)

DAM: KENMERE QUE SERA H33E (MCS H33E) (P)

ROSEDALE Y106E (MR Y106E) (P)
KENMERE QUE SERA B9E (MCS B9E)
KENMERE TRES BONNE (KNC T49E) (P)

	CE DIR	CE DTR	GL	BW	200	400	600	MCW	MILK	SS
EBV	-21.3	-8.0	-1.9	+1.5	+8	+12	+21	+6	+12	+2.1
Acc	47%	41%	49%	73%	65%	67%	65%	61%	48%	75%

	CW	EMA	RIB	RUMP	RBY	IMF
EBV	+6	+1.8	+2.5	+3.5	-0.8	+0.6
Acc	57%	51%	56%	55%	54%	50%

\$ Index Values

Dom (\$) Exp (\$)

-\$22 -\$26

Comments: Quincy is a performance bull with a fine hide and a good scrotal. EBV Percentiles: 1% Rib & Rump Fat, 10% Milk, Scrotal, IMF.

Purchaser:

\$:

45 KENMERE QUICK RISE Q207E (P/S) (R/F) (TW)

Tattoo: MCS Q207E Born: 14/09/2019

LT SILVER DISTANCE 5342 (OAU A7559E) (P)
LT LONG DISTANCE 9001 (OAU E143E) (P)
LT BELLE 7026 (OAU C9133E) (P)

SIRE: KENMERE MAXIMUS (MCS M19E) (P)

KENMERE GRAND MASTER (MCS G6E) (P)
KENMERE NICOLA J46E (MCS J46E) (P)
KENMERE NICOLA F73E (MCS F73E) (P)

ROSEDALE SELECTOR (MR S39E) (P)
ROSEDALE Y106E (MR Y106E) (P)

DAM: KENMERE MICHELLE MCS D20E (MCS D20E) (P)

ROSEDALE GAIETY R40 (MR R40E) (P)
GREENWOOD XPLOSION (TSP X32E) (P)
MINNIE-VALE MICHELLE B28E (SGS B28E) (P)
MINNIE-VALE MICHELLE V93E (SGS V93E)

	CE DIR	CE DTR	GL	BW	200	400	600	MCW	MILK	SS
EBV	+9.1	-0.8	-3.6	-1.0	+16	+24	+38	+32	+12	+0.6
Acc	49%	41%	52%	73%	67%	68%	66%	62%	52%	75%

	CW	EMA	RIB	RUMP	RBY	IMF
EBV	+19	+1.4	+0.4	+0.6	-0.4	+0.9
Acc	58%	51%	55%	54%	53%	50%

\$ Index Values

Dom (\$) Exp (\$)

+\$38 +\$54

Comments: Quick Rise is a complete bull with a lot of milk in his pedigree from his dams' side. Ideal for someone looking for calving ease that wants to retain females. EBV Percentiles: 5% IMF, 10% Calving Ease Direct, Milk, Northern Index, 15% Export Index, 20% Birth Wt, 200 Day Wt, Domestic Index.

Purchaser:

\$:

Kenmere Maternal Power



Nutrien Livestock.

Your Breeding Stock Specialists.

VICTORIA	Ray Attwell	0428 836 136
	Peter Godbolt	0457 591 929
	Stephen Chalmers	0427 908 831
	Andrew Sloan	0428 522 204
NEW SOUTH WALES	Rick Power	0437 131 925
	Tim Woodham	0436 015 115
	John Settree	0408 297 368
	Brad Wilson	0417 467 911
QUEENSLAND	Colby Ede	0417 265 980
	Mark Scholes	0409 229 651
SOUTH AUSTRALIA	Richard Miller	0428 849 327
	Gordon Wood	0408 813 215



NutrienAgSolutions.com.au

Nutrien
Livestock™

Rodwells
A NUTRIEN AG SOLUTIONS BUSINESS



VICTORIA

Wodonga

Peter Ruaro

0447 600 825

Scott Campbell

0428 686 072

Euroa

Michael Curtis

0428 953 222

Benalla

Justin Way

0429 625 513

Adam Roberts

0409 122 388



NEW SOUTH WALES

Wagga Wagga

Anthony Cummins

0428 457 204

www.rodwells.com.au

