

Wool Weekly



Thursday, 19 November 2020

WOOL MARKET MOVEMENTS

- The Australian wool market lost ground on Tuesday before steadying on Wednesday with mostly positive price movements in the Merino fleece sector. However, the weaker crossbred and skirting sectors pulled the EMI down 30 cents to close at 1,159 c/kg clean. Withdrawal and pass in rates both rose this week. Sydney has another Superfine sale next week as 41,527 bales are currently rostered for sale across all three centres.
- Prices eased across the Merino fleece sector in Sydney on Tuesday as the finer MPGS lost up to 52 cents. Buyer demand was sparked by well measured MF4 lots on Wednesday with small positive price movements in most MPGs. The skirtings sector eased up 40 to 70 this week with well measured, low VM (<2%) lots less affected. The crossbred sector lost 30 to 60 cents this week. All oddment categories weakened on Tuesday, especially finer types, with mixed results on Wednesday. The Northern Regional indicator fell 38 cents to 1,214 c/kg clean and the Northern Merino Carding Indicator lost 27 cents to 704 c/kg clean. The Sydney pass in rate was 17.5% with 461 bales withdrawn.
- The Melbourne market opened weaker on both sale days. Lots with unfavourable additional measurements were discounted or passed in on Tuesday as buyers focussed on securing well measured fine lots. High pass in rates pushed buyers into action on Wednesday with most fine MPGs, except the 17 µm, gaining ground. The Merino skirtings market opened weaker on Tuesday before recovering to finish 15 cents easier and tended to maintain this level on Wednesday. Poorly prepared crossbred lots dominated the selection and were discounted on Tuesday with further losses on Wednesday. Low VM oddments were in favour on Tuesday with the sector unchanged on Wednesday. The Southern Regional Indicator lost 24 cents to 1,125 c/kg clean and the Southern Merino Carding Indicator was down 13 cents to 768 c/kg clean. The Melbourne pass in rate was 18.1% with 1,549 bales withdrawn.
- The Fremantle market lost ground on Tuesday before increased buyer competition produced positive price movements (up 5 to 11 cents) in all MPGs on Wednesday. About a third of the Merino fleece offering was passed in on both days. The Merino skirtings sector eased on both days with broader types (>19.5 µm) less affected. All categories of oddments eased on Tuesday before selected fine locks gained up to 40 cents on Wednesday. The Western Regional Indicator closed at 1,212 c/kg clean down 29 cents with the Western Merino Carding Indicator down 9 cents to 767 c/kg clean. The Fremantle pass in rate was 26.2% with 641 bales withdrawn.

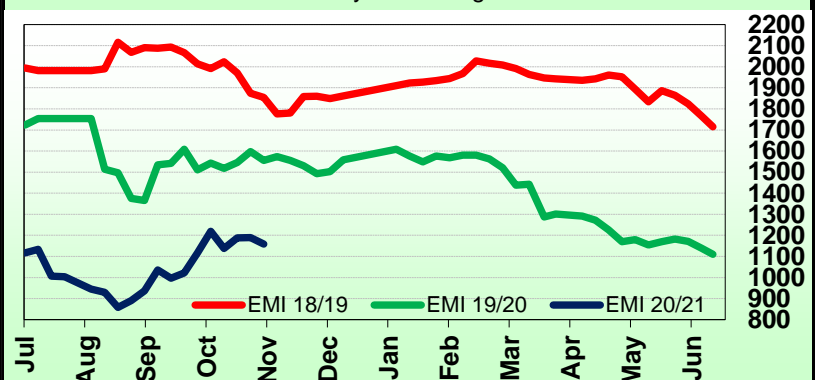
AWEX WEEKLY WOOL PRICES

Regional Indicator	North	Wkly Chg	South	Wkly Chg	West	Wkly Chg
c/kg clean	1214	-38	1125	-24	1212	-29

MICRON PRICE GUIDES						
16.5	1948	-26	1948n	+4	-	-
17	1806	-39	1824n	-14	-	-
17.5	1718	-27	1731	-10	-	-
18	1570	-35	1578	+8	1569n	-23
18.5	1468	-20	1460	-1	1464	-30
19	1386	-27	1376	-15	1383	-29
19.5	1303	-43	1292	-41	1321	-30
20	1229	-49	1228	-31	1241	-33
21	1188n	-38	1174	-51	1193n	-34
22	-	-	1149n	-25	-	-
23	-	-	-	-	-	-
24	-	-	-	-	-	-
25	-	-	-	-	-	-
26	798n	-40	-	-	-	-
28	559n	-41	561	-52	-	-
30	-	-	420	-44	-	-
32	-	-	280n	-20	-	-
MC	704n	-27	768n	-13	767n	-9

AWEX EMI 2018/19 & 2019/20 Seasons vs Current

Currently: 1159 c/kg clean



UPCOMING AUCTION VOLUMES

	24/11/2020	1/12/2020	8/12/2020
Northern	S22	S23	S24
Sydney	10,858	8,935	9,500
Southern	M22	M23	M24
Melbourne	22,971	19,066	22,305
Western	F22	F23	F24
Fremantle	7,698	7,300	7,250
Total	41,527	35,301	39,055

THIS WEEK'S SALES STATISTICS

Centre	Bales Originally	Bales Offered	Bales Sold	Pass in Rate
Northern	6,590	9,148	7,550	17.5%
Southern	18,236	18,863	15,458	18.1%
Western	6,650	6,904	5,092	26.2%
TOTAL	31,476	34,915	28,100	19.5%

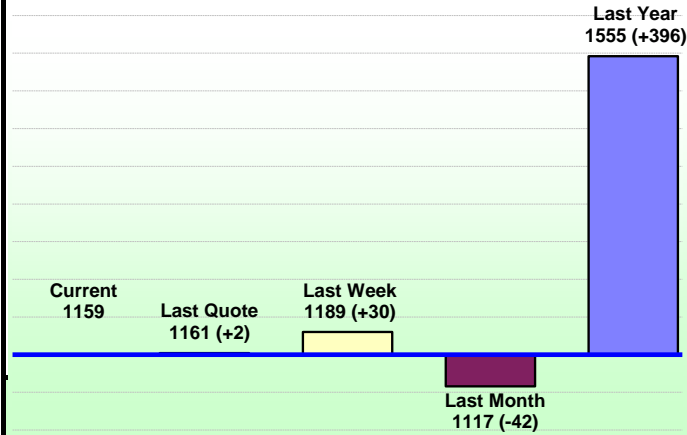
Nutrien Wool Report

EMI 1159 NMI 1214 SMI 1125 WMI 1212



Average Nth-Sth MPG's as reported on 18 Nov 2020

AWEX Weekly Eastern Market Indicator Quote Comparisons



AUD vs USD from 06-Jul-04 to 18-Nov-20



Micron	EMI	16.5	17	17.5	18	18.5	19	19.5	20	21	22	23	25	28	AUD
Current MPG's	1159	1948	1815	1725	1574	1464	1381	1298	1229	1181	1149	-	-	560	0.729
10 year Average	1354	1861	1791	1742	1687	1631	1576	1534	1498	1469	1437	1372	1223	1091	0.804
This time last year	1555	2058	1986	1932	1884	1843	1785	1759	1736	1726	-	-	-	892	0.680
10 year High	2116	3187	3007	2831	2683	2569	2462	2414	2391	2371	2350	2308	2153	1828	1.058
10 year Low	858	1267	1216	1177	1140	1060	997	947	905	884	863	953	941	402	0.557
% Reported above current	61%	37%	38%	40%	43%	51%	57%	61%	67%	74%	77%	0%	0%	96%	68%
Diff b/w High & Current	957	1239	1192	1107	1109	1105	1081	1116	1163	1190	1201	-	-	1268	0.329
Diff b/w Ave & Current	-195	87	24	-18	-113	-167	-195	-236	-269	-288	-288	-	-	-531	-0.075

Percentile Bands

95%	1959	2982	2760	2575	2436	2353	2298	2275	2260	2240	2223	2168	1831	1529	1.050
90%	1833	2609	2521	2471	2357	2242	2155	2080	2067	2058	2085	1801	1383	1280	1.040
80%	1557	2463	2345	2241	2131	2008	1869	1780	1727	1670	1553	1428	1249	1182	1.010
75%	1516	2310	2228	2167	2068	1893	1793	1718	1626	1537	1460	1369	1166	1146	0.985
60%	1295	1920	1769	1695	1624	1576	1526	1472	1412	1384	1355	1296	1154	1053	0.895
50%	1241	1743	1623	1566	1529	1481	1435	1396	1351	1321	1284	1232	1123	982	0.785
40%	1174	1575	1524	1497	1462	1426	1373	1332	1278	1261	1225	1186	1093	931	0.763
25%	1082	1482	1390	1348	1311	1280	1250	1206	1184	1167	1150	1126	1053	897	0.728
10%	1011	1360	1289	1262	1218	1185	1157	1128	1097	1089	1071	1046	978	850	0.695

Indicative Basis Contract Prices

Date	MPG	17	17.5	18	18.5	19	19.5	20	21	22	23	28
Nov-2020		1570	1500	1450	1330	1300	1280	1150	1140	1090	1040	455
Dec-2020		1570	1500	1450	1330	1300	1280	1150	1140	1090	1040	455
Jan-2021		1700	1630	1580	1270	1240	1220	1130	1120	1070	1020	455
Feb-2021		1570	1500	1450	1270	1240	1220	1090	1080	1030	980	455
Mar-2021		1570	1500	1450	1230	1200	1180	1045	1035	985	935	425
Apr-2021		1570	1500	1450	1225	1195	1175	1045	1035	985	935	400
May-2021		1570	1500	1450	1220	1190	1170	1040	1030	980	930	400
Jun-2021		1570	1500	1450	1220	1190	1170	1040	1030	980	930	390
Jul-2021		1430	1360	1310	1190	1160	1140	1010	1000	950	900	380
Aug-2021		1325	1255	1205	1085	1055	1035	1005	995	945	895	370
Sep-2021		1305	1235	1185	1065	1035	1015	985	975	925	875	360
Oct-2021		1295	1225	1175	1055	1025	1005	975	965	915	865	350
Nov-2021		1285	1215	1165	1045	1015	995	965	955	905	855	340
Dec-2021		1275	1205	1155	1035	1005	985	955	945	895	845	330
Jan-2022		1265	1195	1145	1025	995	975	945	935	885	835	320

Mulesing Status P/D's

µm	Non Mulsed	Pain Relief
18	+42	+2
19	+40	0
20	+30	0
21	0	0
23	0	0
25	+12	0

All prices on this sheet are listed in c/kg clean. MPG's are average North/South AWEX quoted figures. Mulesing P/D's quoted by AWEX. Basis Contract prices are published purely as a guide.

Please use above figures as a guide to submit your GTC or Target orders. Call 1800 629 396.